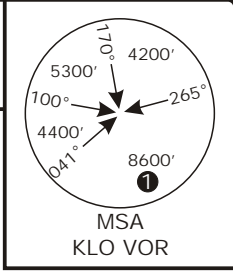


Valid for flight simulation use only - do not use for real life navigation

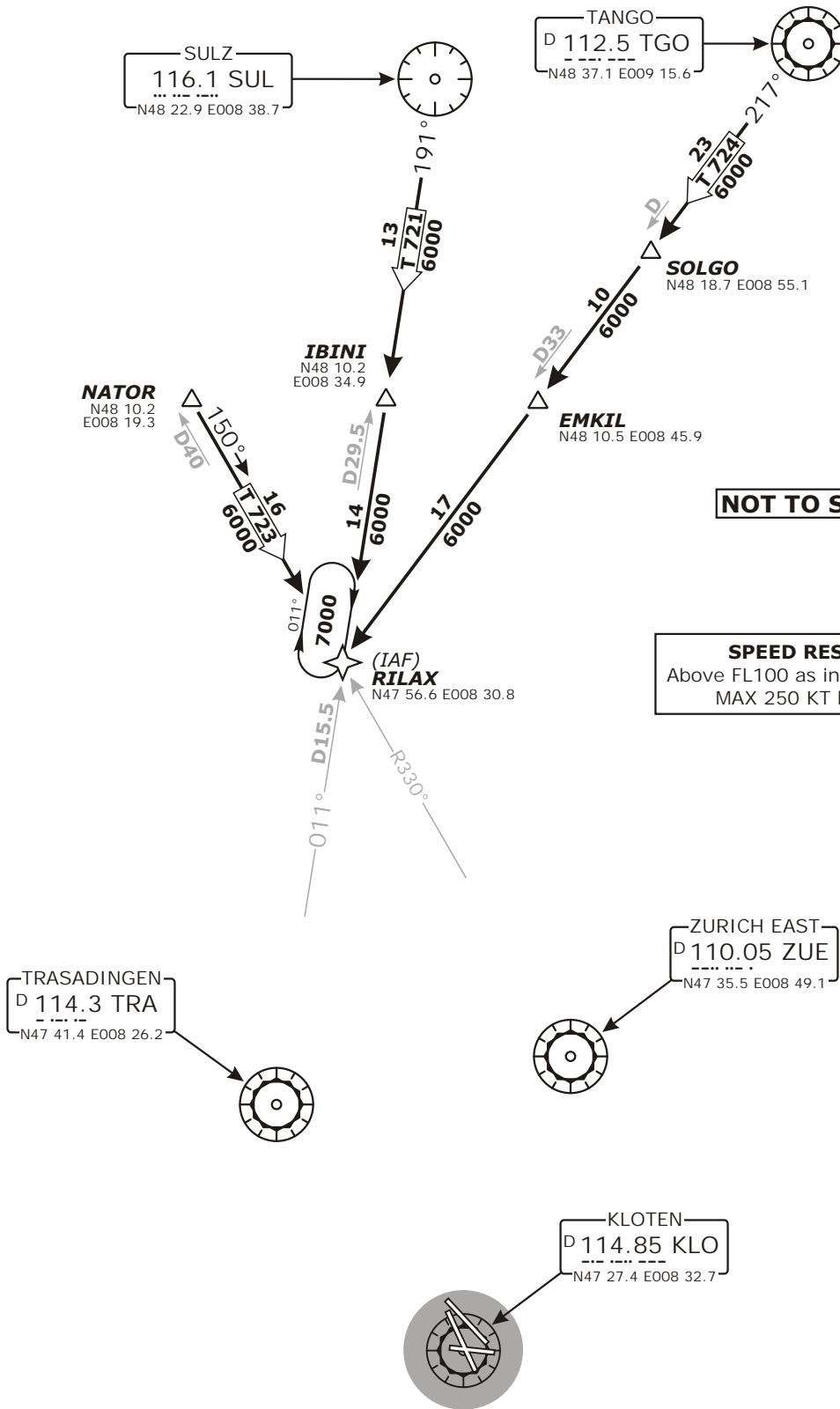
Swiss Radar LSAS_CTR 128.05	ZURICH Arrival LSZH_APP 120.75	ZURICH Final LSZH_F_APP 125.35	Apt Elev 1416'	Alt Set: hPa (IN on request) Trans level: by ATC Trans alt: 7000'
-----------------------------------	--------------------------------------	--------------------------------------	--------------------------	---



RNAV TRANSITIONS

TO RILAX HOLDING
FOR CONTINUATION AFTER RILAX REFER TO CHART NO.3

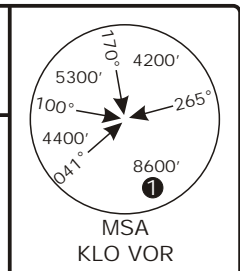
① 5900' within
17 DME



CHANGES: Transition to TRA transferred.

Valid for flight simulation use only - do not use for real life navigation

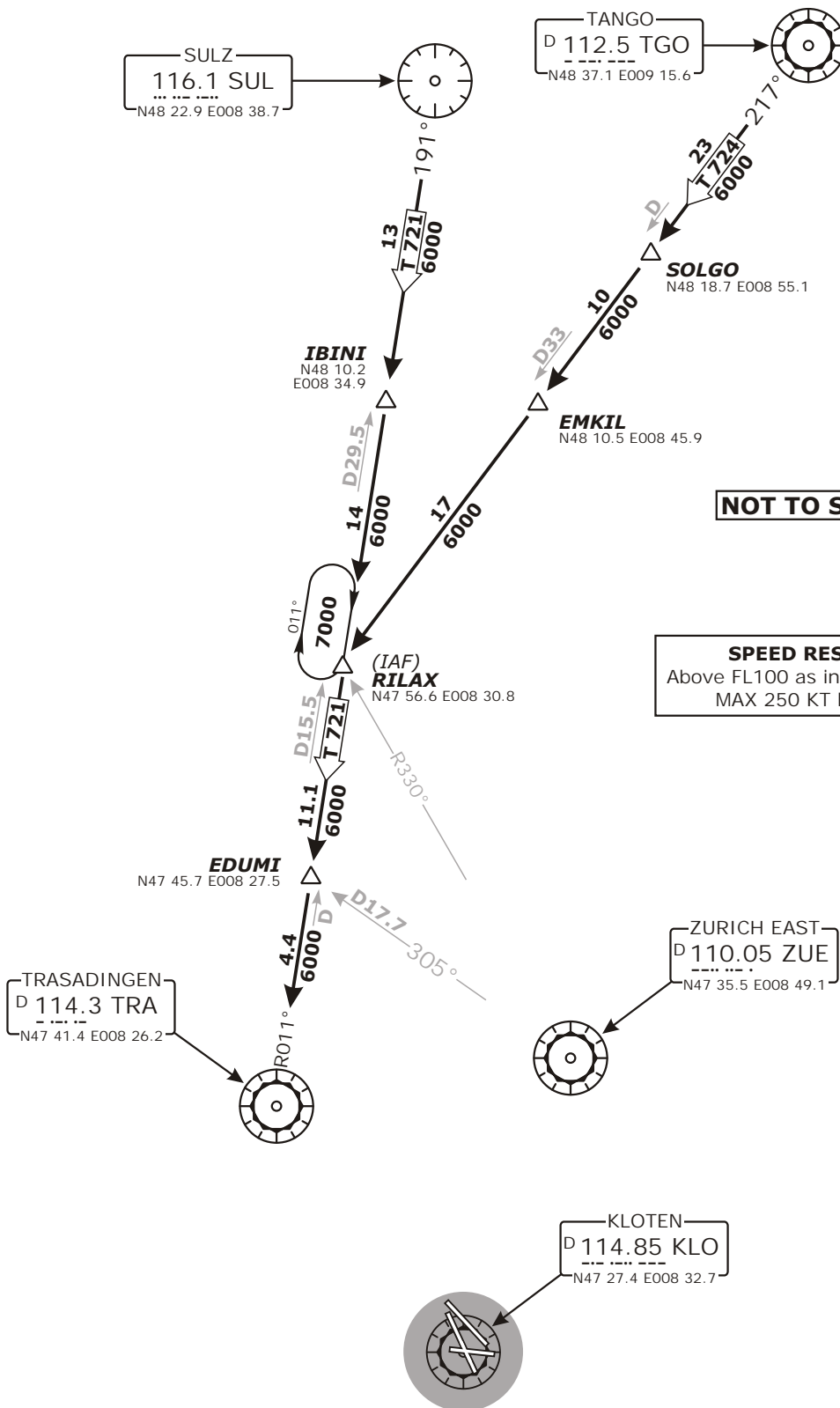
Swiss Radar LSAS_CTR 128.05	ZURICH Arrival LSZH_APP 120.75	ZURICH Final LSZH_F_APP 125.35	Apt Elev 1416'	Alt Set: hPa (IN on request) Trans level: by ATC Trans alt: 7000'
-----------------------------------	--------------------------------------	--------------------------------------	--------------------------	---



NON-RNAV TRANSITIONS

TO TRA

FOR CONTINUATION AFTER TRA REFER TO CHART NO.3



NOT TO SCALE

SPEED RESTRICTION
Above FL100 as instructed by Radar.
MAX 250 KT below FL100.

Valid for flight simulation use only - do not use for real life navigation

CHANGES: editorial.

© VAOC Switzerland

http://www.vaoc.ch/

charts@vaoc.ch

LSZH/ZRH ZURICH

STAR CHART NO. 3
Revision 13 FEB 08

ZURICH, SWITZERLAND
RNAV and NON-RNAV STAR

Swiss Radar
LSAS_CTR
128.05

ZURICH Arrival
LSZH_APP
120.75

ZURICH Final
LSZH_F_APP
125.35

Apt Elev
1416'

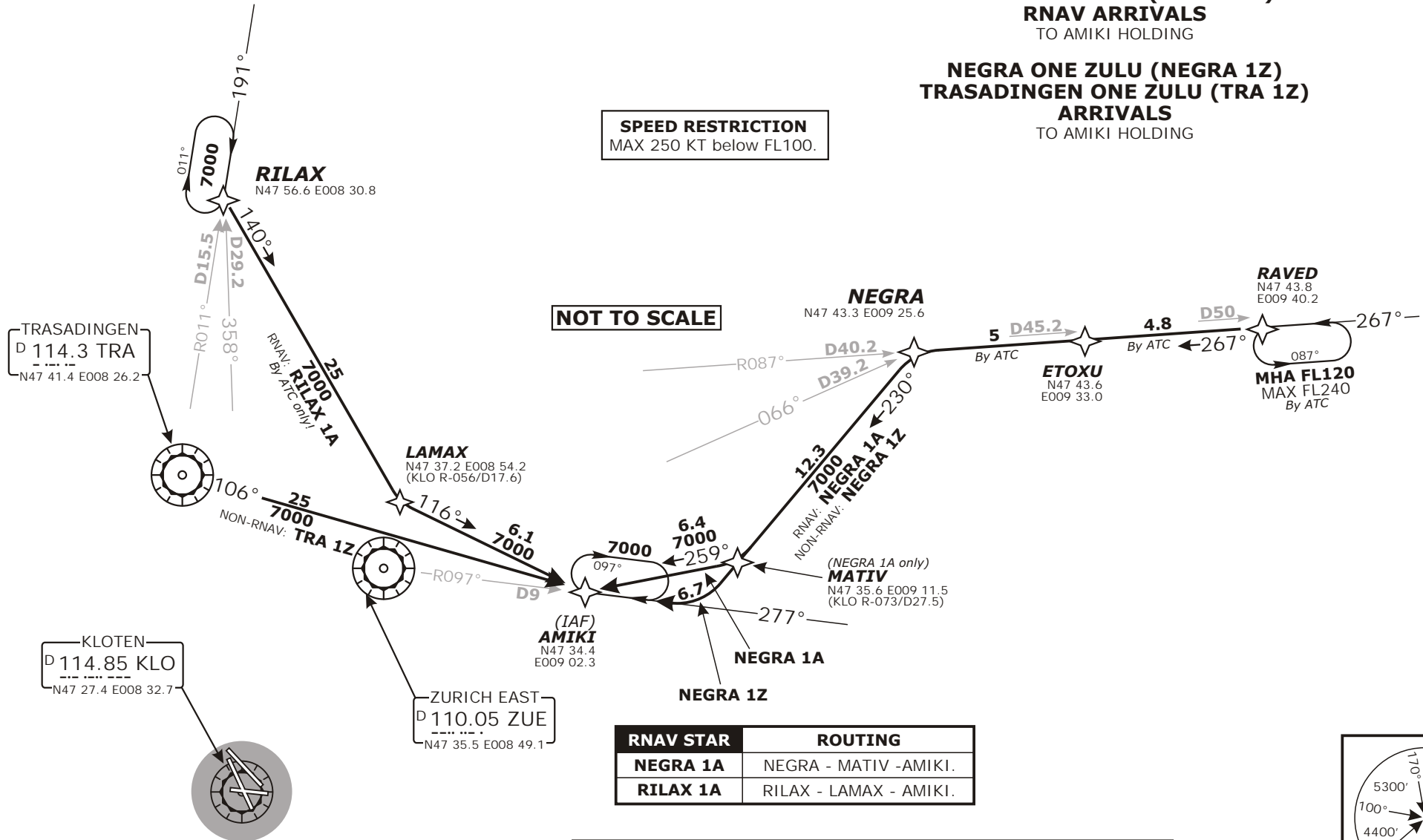
Alt Set: hPa (IN on request)
Trans level: by ATC
Trans alt: 7000'

**NEGRA ONE ALFA (NEGRA 1A)
RILAX ONE ALFA (RILAX 1A)
RNAV ARRIVALS
TO AMIKI HOLDING**

**NEGRA ONE ZULU (NEGRA 1Z)
TRASADINGEN ONE ZULU (TRA 1Z)
ARRIVALS
TO AMIKI HOLDING**

SPEED RESTRICTION
MAX 250 KT below FL100.

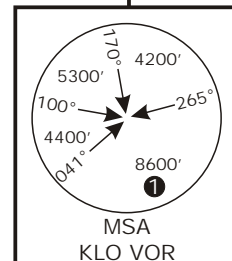
NOT TO SCALE



RNAV STAR	ROUTING
NEGRA 1A	NEGRA - MATIV - AMIKI.
RILAX 1A	RILAX - LAMAX - AMIKI.

NON-RNAV STAR	ROUTING
NEGRA 1Z	230° track, intercept ZUE R-097 inbound to AMIKI.
TRA 1Z	TRA R-106 to AMIKI.

① 5900' within 17 DME



Valid for flight simulation use only - do not use for real life navigation

CHANGES: HOC 2Z, WIL 2Z, URNAS 2Z changed.

LSZH/ZRH ZURICH

STAR CHART NO. 4
Revision 09 APR 09

ZURICH, SWITZERLAND

RNAV and NON-RNAV STAR

Swiss Radar
LSAS CTR
128.05

ZURICH Arrival
LSZH APP
120.75

ZURICH Final
LSZH F APP
125.35

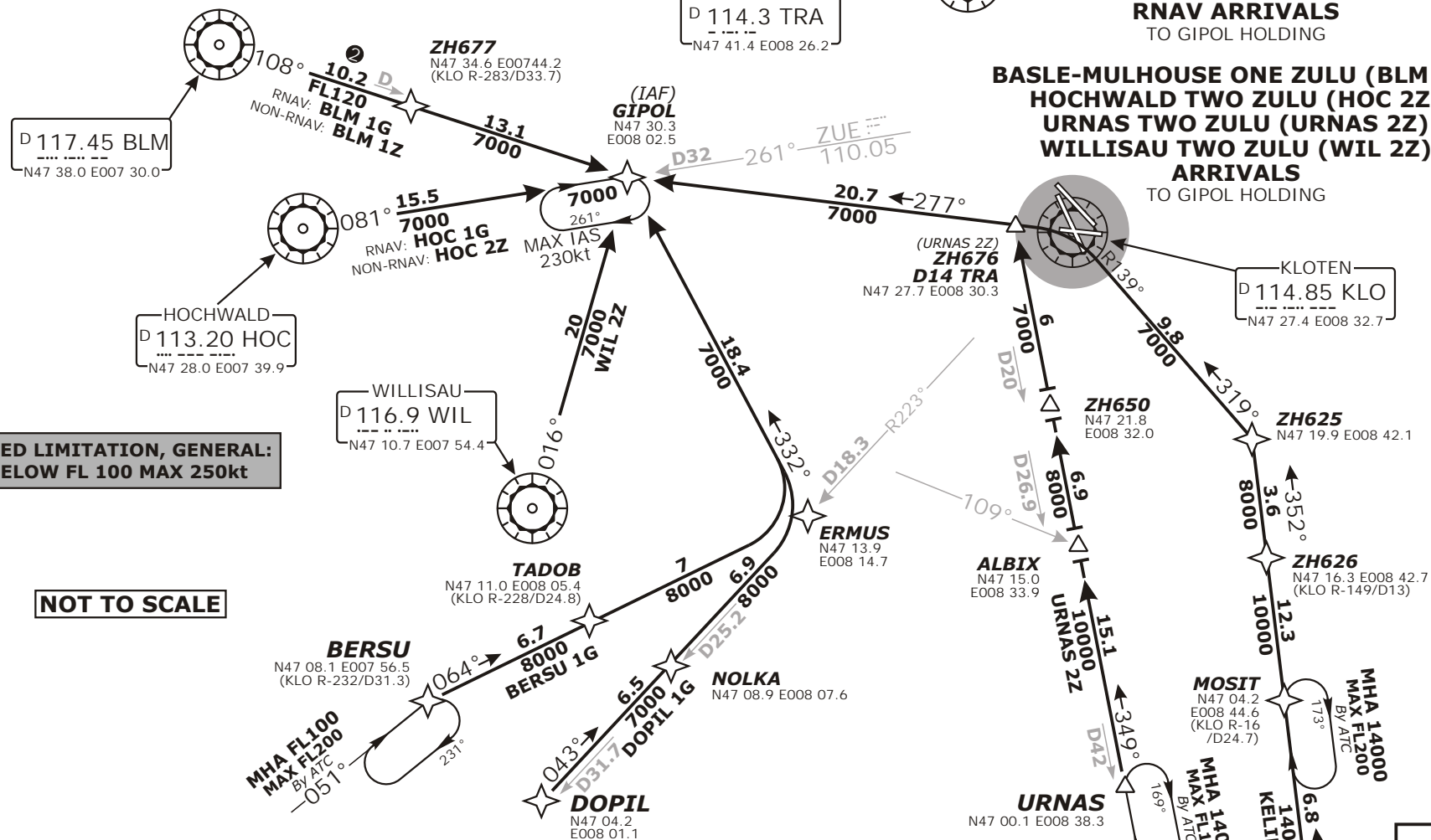
Apt Elev
1416'

Alt Set: hPa (IN on request)
Trans level: by ATC
Trans alt: 7000'

② For the purpose of descent planning expect to cross 9NM to BLM at or above **FL200**, BLM at or above **FL150**, ZH677 at or above **FL120**.

BERSU ONE GOLF (BERSU 1G)
BASLE-MULHOUSE ONE GOLF (BLM 1G)
HOCHWALD ONE GOLF (HOC 1G)
DOPILO ONE GOLF (DOPILO 1G)
KELIP ONE GOLF (KELIP 1G)
RNAV ARRIVALS
TO GIPOL HOLDING

BASLE-MULHOUSE ONE ZULU (BLM 1Z)
HOCHWALD TWO ZULU (HOC 2Z)
URNAS TWO ZULU (URNAS 2Z)
WILLISAU TWO ZULU (WIL 2Z)
ARRIVALS
TO GIPOL HOLDING

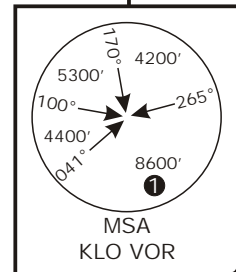


**SPEED LIMITATION, GENERAL:
BELOW FL 100 MAX 250kt**

NOT TO SCALE

RNAV STAR	ROUTING
BERSU 1G	BERSU - TADOB - ERMUS - GIPOL.
BLM 1G ②	BLM - ZH677 - GIPOL.
HOC 1G	HOC - GIPOL.
DOPILO 1G	DOPILO - NOLKA - ERMUS - GIPOL.
KELIP 1G	KELIP - MOSIT - ZH626 - ZH625 - KLO - GIPOL.

NON-RNAV STAR	ROUTING
BLM 1Z ②	BLM R-108 to GIPOL.
HOC 2Z	HOC R-081 to GIPOL.
URNAS 2Z	Intercept TRA R-169 inbound to ZH676/ D14 TRA, intercept KLO R-278 to GIPOL.
WIL 2Z	WIL R-016 to GIPOL.



© VAOC Switzerland
http://www.vaoc.ch
charts@vaoc.ch