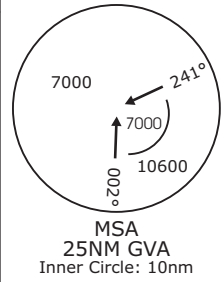
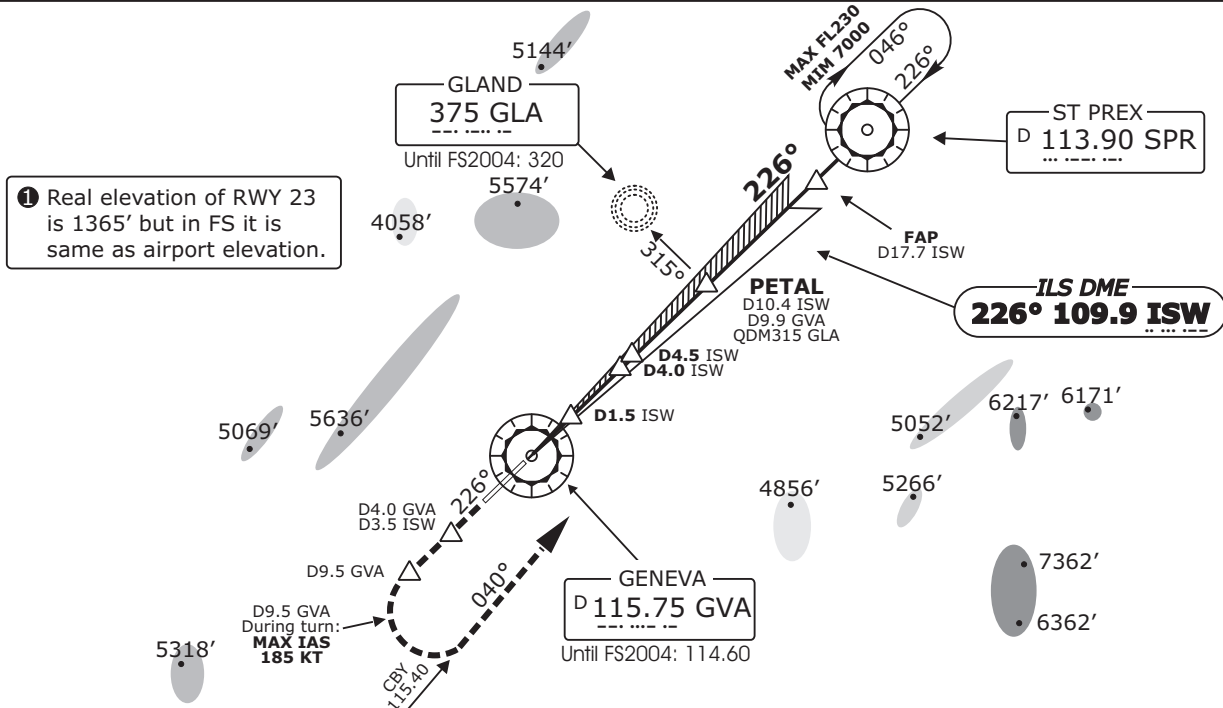


ATIS 135.57	Geneva Arrival LSGG_APP 131.32	Geneva Final LSGG_F_APP 120.3	Geneva Tower LSGG_TWR 118.70	Geneva Ground LSGG_GND 121.90
LOC ISW <b>109.9</b>	Final Apch Crs <b>226°</b>	GS <b>D4.0 ISW</b> <b>2650' (1239')</b>	ILS RA 216 DA(H) <b>1611' (200')</b>	Apt Elev 1411' <b>RWY 1411' ①</b>

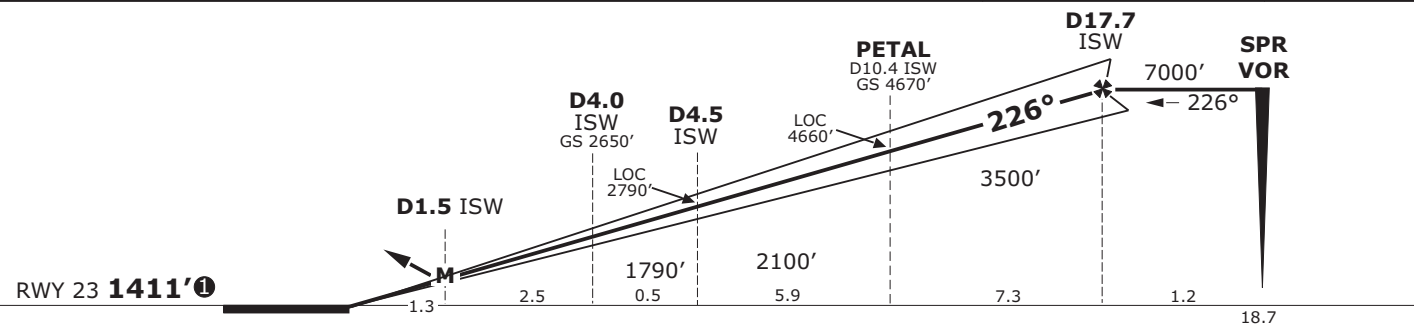


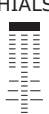
**MISSED APCH:** Climb straight ahead on RWY axis. Follow R226 GVA. At D9.5 GVA past the station, turn left to intercept R040 CBY. Climb to 7000ft. Proceed to SPR.  
Max IAS 185KT during turns, for turns below 5000' bank angle 25°.

- Alt Set: hPa      Rwy Elev: 49 hPa      Trans level: By ATC      Trans alt: 7000' (5589')
1. ILS DME reads zero at rwy 23 threshold.
  2. ILS front course width 3°.



LOC (GS out)	ISW DME	2.0	4.0	6.0	8.0	10.0	12.0	14.0	16.0
	ALTITUDE (HAT)	2010'(599')	2650'(1239')	3280'(1869')	3920'(2569')	4560'(3149')	5190'(3779')	5830'(4419')	6470'(5059')



Gnd speed-Kts	70	90	100	120	140	160	HIALS 
ILS GS 3.00° or LOC Descent Gradient 5.2%	377	485	539	647	755	862	
MAP at D1.0 ISW/D0.7 GVA							

**STRAIGHT-IN-LANDING RWY 23**

ILS CAT I RA 216' DA(H) <b>1611' (200')</b>		ILS CAT II RA 108' DA(H) <b>1511' (100')</b>		LOC (GS out) MDA(H) <b>1811' (445')</b>		CIRCLE-TO-LAND Not authorized South of airport	
FULL	ALS out	FULL		ALS out		Max Kts	MDA(H)      VIS
				RVR 900m	RVR 1500m	100	2100' (689')      1500m
				RVR 1000m	RVR 1800m	135	2100' (689')      1600m
C	RVR 550m	RVR 1000m	RVR 300m	RVR 1000m	RVR 1800m	180	2400' (989')      2400m
D				RVR 1400m	RVR 2000m	180	2400' (989')      3600m

Valid for flight simulation use only - do not use for real life navigation

Changes: Layout, missed approach text