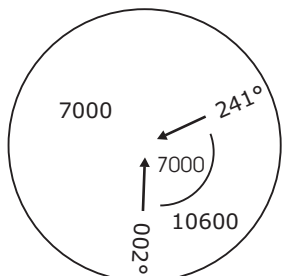


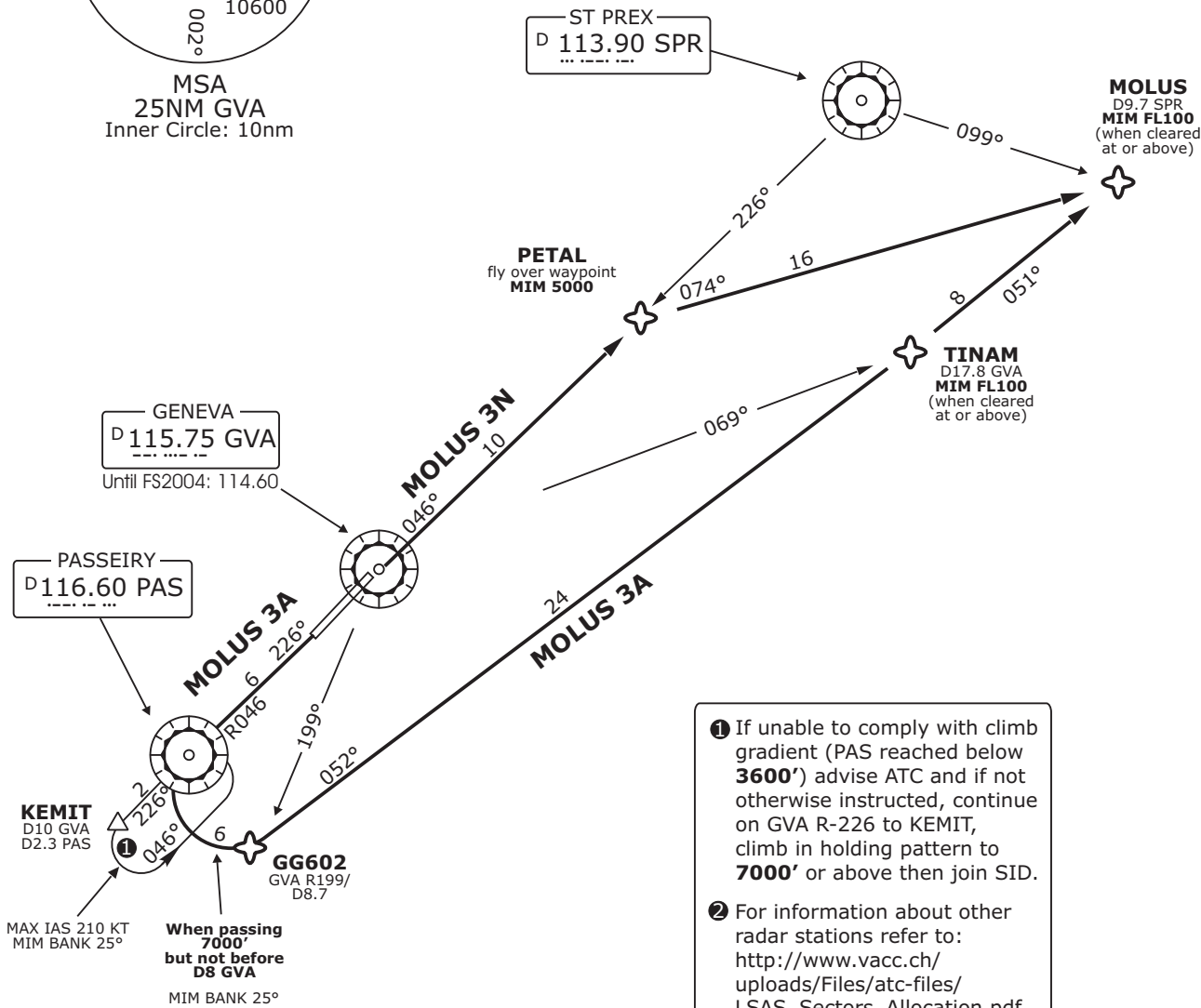
Geneva Departure LSGG_DEP 119.52	Geneva Arrival LSGG_APP 131.32	Swiss Radar LSAS_CTR ② 128.05	Trans level: By ATC Trans alt: 7000'
--	--------------------------------------	-------------------------------------	--------------------------------------

MOLUS DEPARTURES

(RWYS 23, 05)
TO NORTHEAST AND EAST



MSA
25NM GVA
Inner Circle: 10nm



- ① If unable to comply with climb gradient (PAS reached below **3600'**) advise ATC and if not otherwise instructed, continue on GVA R-226 to KEMIT, climb in holding pattern to **7000'** or above then join SID.
- ② For information about other radar stations refer to: http://www.vacc.ch/uploads/Files/atc-files/LSAS_Sectors_Allocation.pdf
- ③ Traffic planned on (U)N871, expect on ATC request ALTN RTE Z56 (SOSAL GUDAX, FL110 or above).

Initial climb clearance FL90

SID	RWY	ROUTING	ALTITUDE
MOLUS 3A ③	23	Climb on GVA R-226 (PAS R-046 inbound). When passing 7000' but not before D8 GVA (PAS), turn LEFT (MAX IAS 250KT, MIM bank 25°). Proceed via GG602 and TINAM to MOLUS.	Cross TINAM at FL100 MIM.
MOLUS 3N ③	05	Climb on GVA R-046 (SPR R-226 inbound). When passing PETAL (fly over waypoint) proceed to MOLUS.	Cross PETAL at 5000' MIM MOLUS at FL100 MIM.

Valid for flight simulation use only - do not use for real life navigation

This chart must only be provided on www.vacc.ch or www.vateud.org. Please inform us if you've downloaded it somewhere else.

Changes: Designator of all SIDs changed, ballflag 3 added