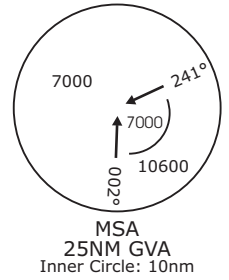
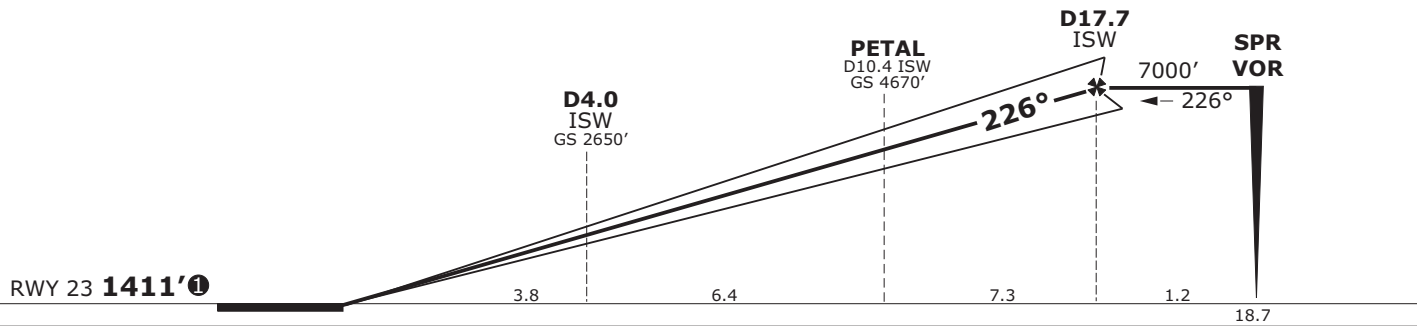
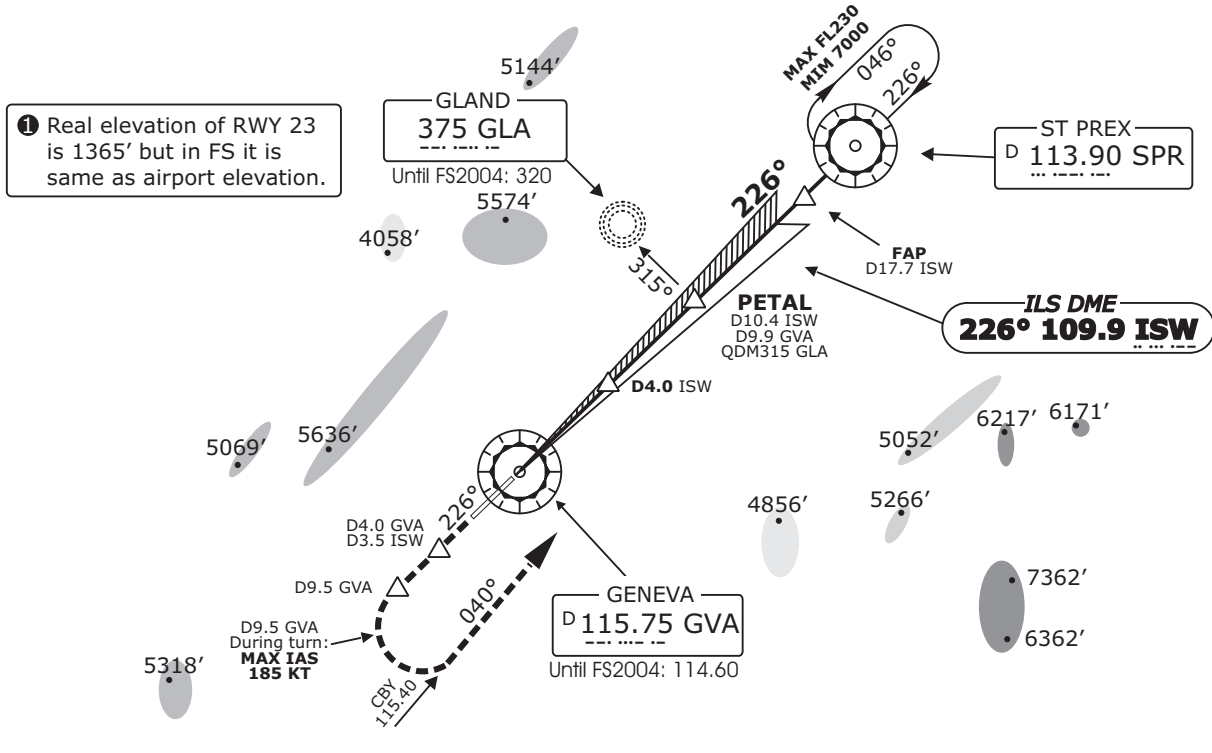


ATIS 135.57	Geneva Arrival LSGG_APP 131.32	Geneva Final LSGG_F_APP 120.30	Geneva Tower LSGG_TWR 118.70	Geneva Ground LSGG_GND 121.90
LOC ISW <b>109.9</b>	Final Apch Crs <b>226°</b>	GS <b>D4.0 ISW</b> 2650' (1239')	CAT II ILS <b>RA 108</b> DA(H) 1611' (200')	Apt Elev 1411' RWY <b>1411' ①</b>

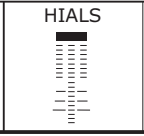


**MISSED APCH:** Climb straight ahead on RWY axis. Follow R226 GVA.  
At D9.5 GVA past the station, turn left to intercept R040 CBY. Climb to 7000ft. Proceed to SPR.  
Max IAS 185KT during turns, for turns below 5000' bank angle 25°.

- Alt Set: hPa      Rwy Elev: 49 hPa      Trans level: By ATC      Trans alt: 7000' (5589')
1. ILS DME reads zero at rwy 23 threshold.
  2. ILS front course width 3°.



Gnd speed-Kts	70	90	100	120	140	160
ILS GS 3.00° or LOC Descent Gradient 5.2%	377	485	539	647	755	862
MAP at D1.0 ISW/D0.7 GVA						



STRAIGHT-IN-LANDING RWY 23

CAT II ILS  
ABCD  
**RA 108'**  
DA(H) **1511'** (100')

RVR 300m

Valid for flight simulation use only - do not use for real life navigation

Changes: Layout, missed approach text