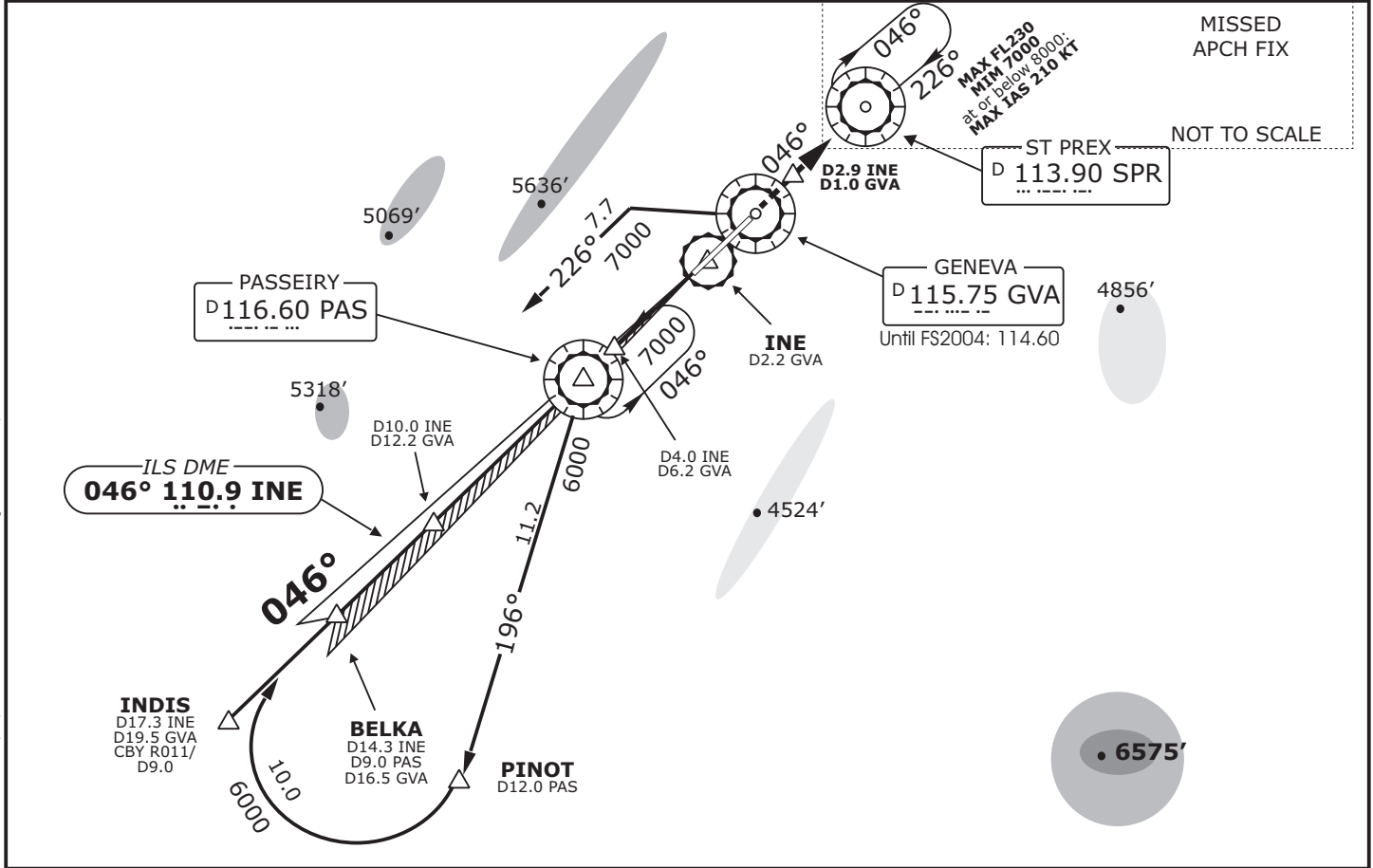
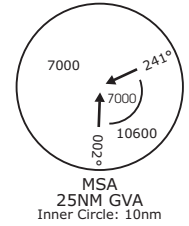
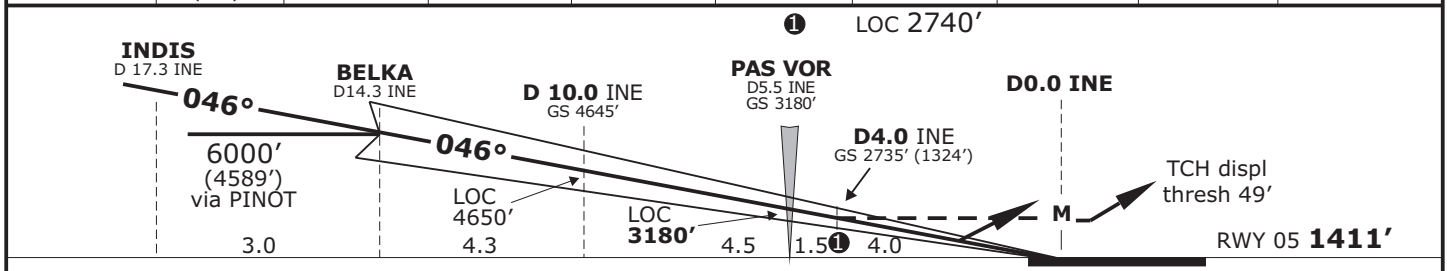


ATIS 135.57	Geneva Arrival LSGG_APP 131.32	Geneva Final LSGG_F_APP 120.30	Geneva Tower LSGG_TWR 118.70	Geneva Ground LSGG_GND 121.90
LOC INE 110.9	Final Apch Crs 046°	GS PAS VOR 3180' (1769')	ILS DA(H) Refere to Minimums	Apt Elev 1411' RWY 1411'
MISSED APCH: Climb straight ahead on RWY axis. Follow R-046 GVA. Climb to 7000ft. Proceed to SPR. Cross D9.5 GVA past the station at 4000ft or above.				
Alt Set: hPa		Rwy Elev: 51 hPa	Trans level: By ATC	Trans alt: 7000' (5589')
1. Radar vectoring to LOC may be expected. 2. ILS DME reads zero at rwy 05 displ thresh. 3. ILS front course width 3°				



LOC (GS out)	INE DME	16.0	14.0	12.0	10.0	8.0	6.0	4.0	2.0
	ALTITUDE (HAT)	6560'(5149')	5920'(4509')	5290'(3879')	4650'(3239')	4010'(2599')	3380'(1969')	2740'(1329')	2100'(689')



Gnd speed-Kts	70	90	100	120	140	160	HIALS + + +
ILS GS 3.00° or LOC Descent Gradient 5.2%	377	485	539	647	755	862	
MAP at D0.0 INE/D2.2 GVA							

DA(H)		STRAIGHT-IN-LANDING RWY 05		LOC (GS out)		CIRCLE-TO-LAND	
AB: 1611' (200')		C: 1615' (204')		D: 1624' (213')		Not authorized South of airport	
FULL		ALS out		MDA(H) 1810' (399')			
A				ALS out	Max Kts	MDA(H)	VIS
B	RVR 550m			RVR 900m	100	2100' (689')	1500m
C		RVR 1000m		RVR 1000m	135	2100' (689')	1600m
D	RVR 600m			RVR 1400m	180	2400' (989')	2400m
				RVR 2000m	180	2400' (989')	3600m

Valid for flight simulation use only - do not use for real life navigation

Changes: Layout, missed approach text