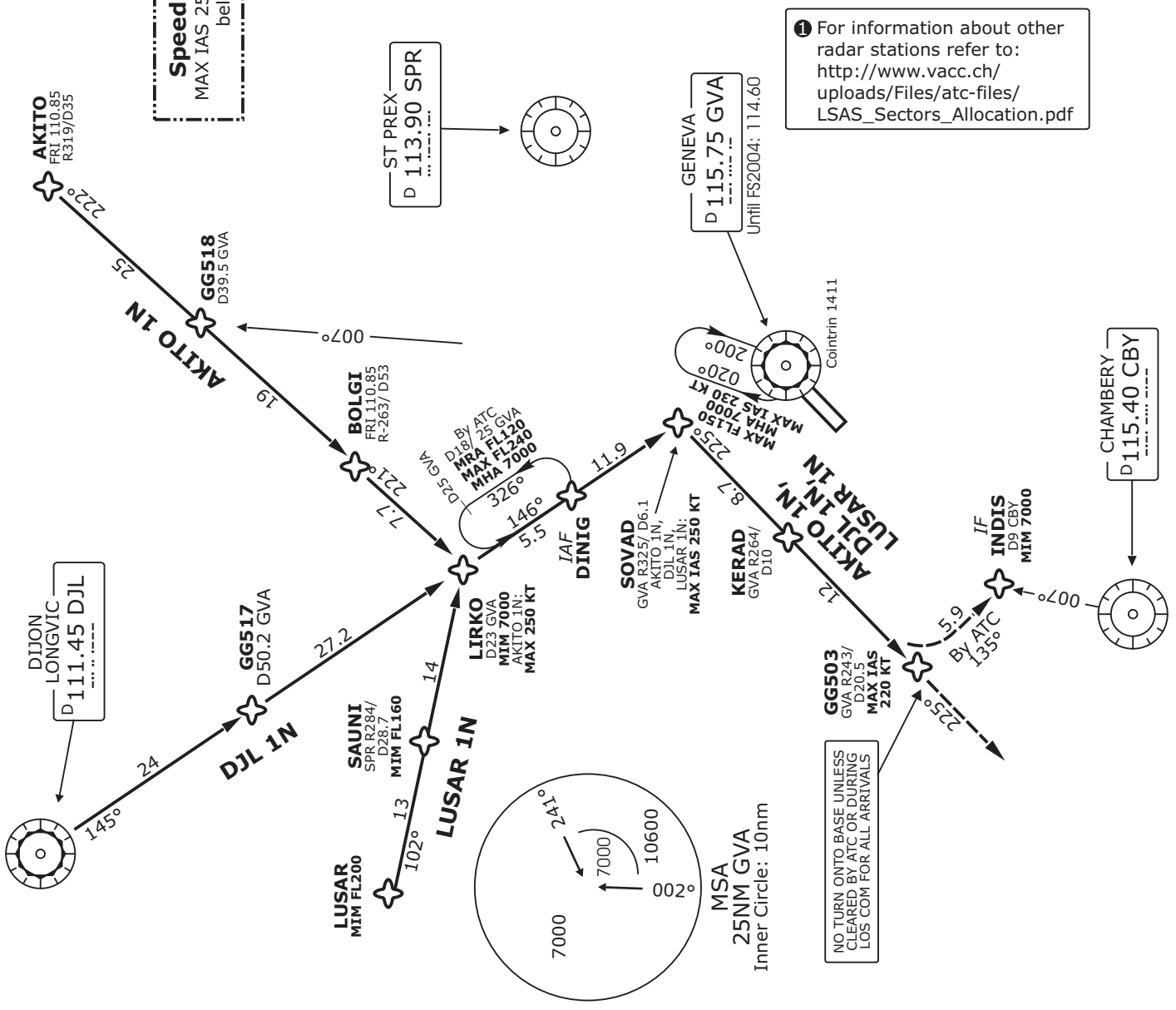


ATIS 135.57	Swiss Radar LSAS_CTR 128.05	Geneva Arrival LSGG_APP 131.32	Geneva Final LSGG_F_APP 120.30	Trans level: By ATC	Trans alt: 7000'
----------------	--------------------------------	--------------------------------------	--------------------------------------	---------------------	------------------

**AKITO ONE NOVEMBER (AKITO 1N)
DIJON ONE NOVEMBER (DJL 1N)
LUSAR ONE NOVEMBER (LUSAR 1N)
RNAV ARRIVALS RWY 05
FROM NORTHWEST AND NORTH**

Speed Restriction
MAX IAS 250 KT or as by ATC
below FL100.

① For information about other radar stations refer to:
http://www.vacc.ch/uploads/Files/atc-files/LSAS_Sectors_Allocation.pdf



Valid for flight simulation use only - do not use for real life navigation

Changes: Layout, speed limitations

STAR	ROUTING
AKITO 1N	From AKITO proceed via GG518, BOLGI, LIRKO (MAX IAS 250 KT, MIM Bank angle 25°), DINIG (IAF), SOVAD (MAX IAS 250 KT), KERAD, GG503 (MAX IAS 220 KT). Continue on track. On ATC instruction, proceed to INDIS (IF). Intercept FINAL APCH 05.
DJL 1N	FROM DJL proceed via GG517, LIRKO, DINIG (IAF), SOVAD (MAX IAS 250 KT), KERAD, GG503 (MAX IAS 220 KT). Continue on track. On ATC instruction, proceed to INDIS (IF). Intercept FINAL APCH 05.
LUSAR 1N	From LUSAR proceed via SAUNI, LIRKO, DINIG (IAF), SOVAD (MAX IAS 250 KT), KERAD, GG503 (MAX IAS 220 KT). Continue on track. On ATC instruction, proceed to INDIS (IF). Intercept FINAL APCH 05.