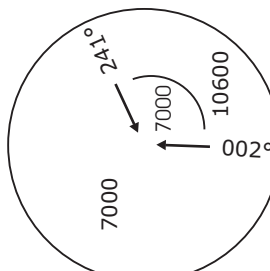


ATIS 135.57	Swiss Radar LSAS_CTR ① 128.05	Geneva Arrival LSGG_APP 131.32	Geneva Final LSGG_F_APP 120.30	Trans level: By ATC	Trans alt: 7000'
----------------	-------------------------------------	--------------------------------------	--------------------------------------	---------------------	------------------

**BANKO TWO NOVEMBER (BANKO 2N)  
KINES ONE NOVEMBER (KINES 1N)  
BELUS ONE NOVEMBER (BELUS 1N)  
RNAV ARRIVALS RWY 05  
FROM SOUTHWEST, SOUTH AND SOUTHEAST**

① For information about other radar stations refer to:  
[http://www.vacc.ch/uploads/Files/atc-files/LSAS\\_Sectors\\_Allocation.pdf](http://www.vacc.ch/uploads/Files/atc-files/LSAS_Sectors_Allocation.pdf)

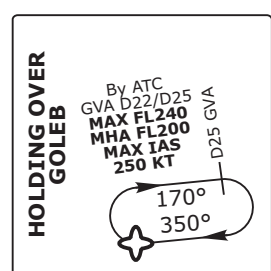


GENEVA  
D 115.75 GVA  
Until FS2004: 114.60

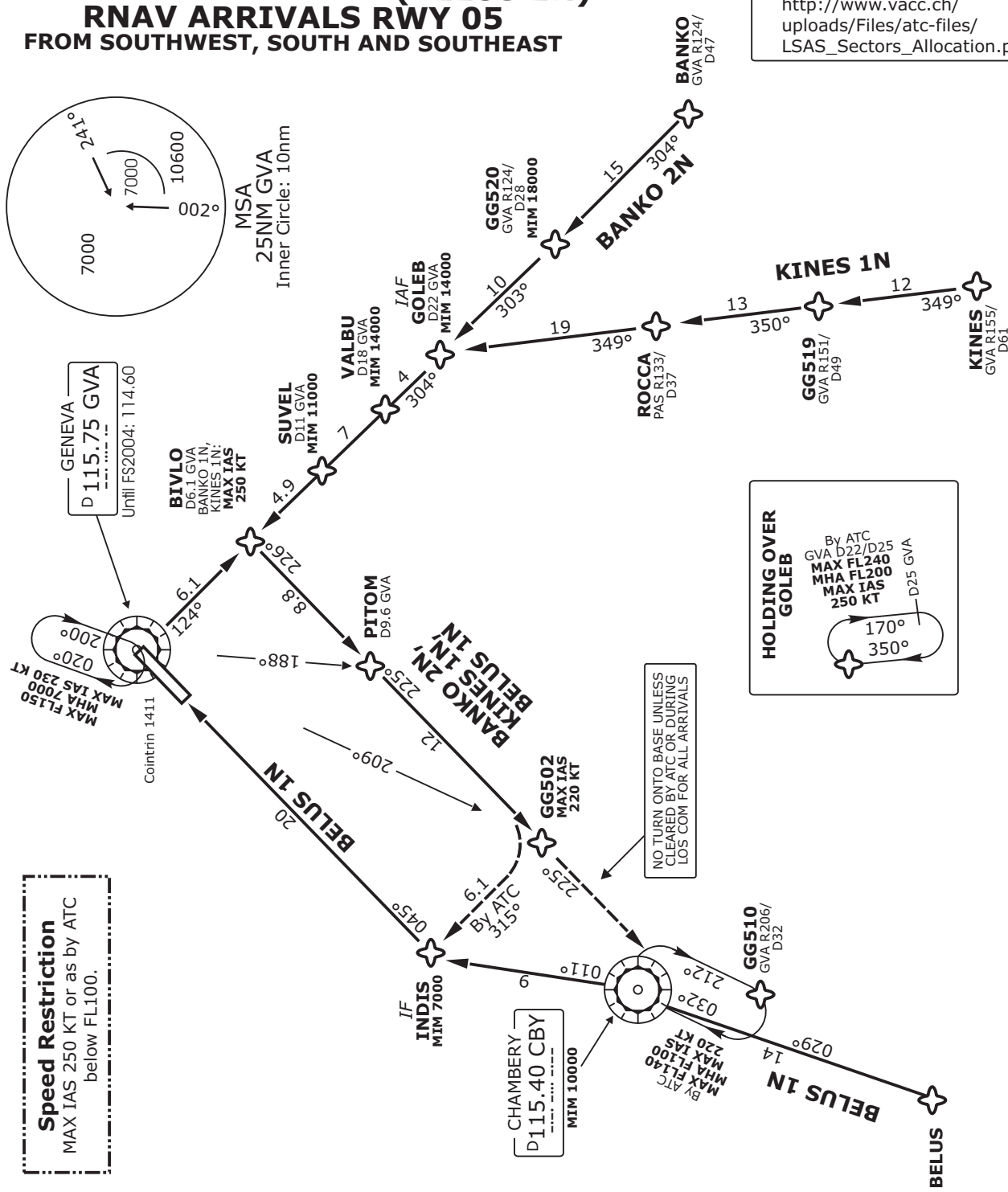


**Speed Restriction**  
MAX IAS 250 KT or as by ATC  
below FL100.

CHAMBERY  
D 115.40 CBY  
MIM 10000



NO TURN ONTO BASE UNLESS  
CLEARED BY ATC OR DURING  
LOS COM FOR ALL ARRIVALS



Valid for flight simulation use only - do not use for real life navigation. This chart must only be provided on www.vacc.ch or www.vateud.org. Please inform us if you've downloaded it somewhere else.

Changes: Layout, speed limitations

STAR	ROUTING
BANKO 2N	FROM BANKO proceed via GG520, GOLEB (IAF), VALDU, SUVEL, BIVLO (MAX IAS 250 KT), PITOM, GG502 (MAX IAS 220 KT). Continue on track. On ATC instruction, proceed to INDIS (IF). Intercept FINAL APCH 05.
KINES 1N	From KINES proceed via GG519, ROCCA, GOLEB (IAF), VALBU, SUVEL, BIVLO (MAX IAS 250 KT), PITOM, GG502 (MAX IAS 220 KT). Continue on track. On ATC instruction, proceed to INDIS (IF). Intercept FINAL APCH 05.
BELUS 1N	From BELUS (MAX IAS 250 KT) proceed via CBY (IAF), INDIS, GVA (MAX IAS 220 KT), BIVLO (MAX IAS 220 KT), PITOM, GG502 (MAX IAS 220KT). Continue on track. One ATC instruction, proceed to INDIS (IF). Intercept FINAL APCH 05.