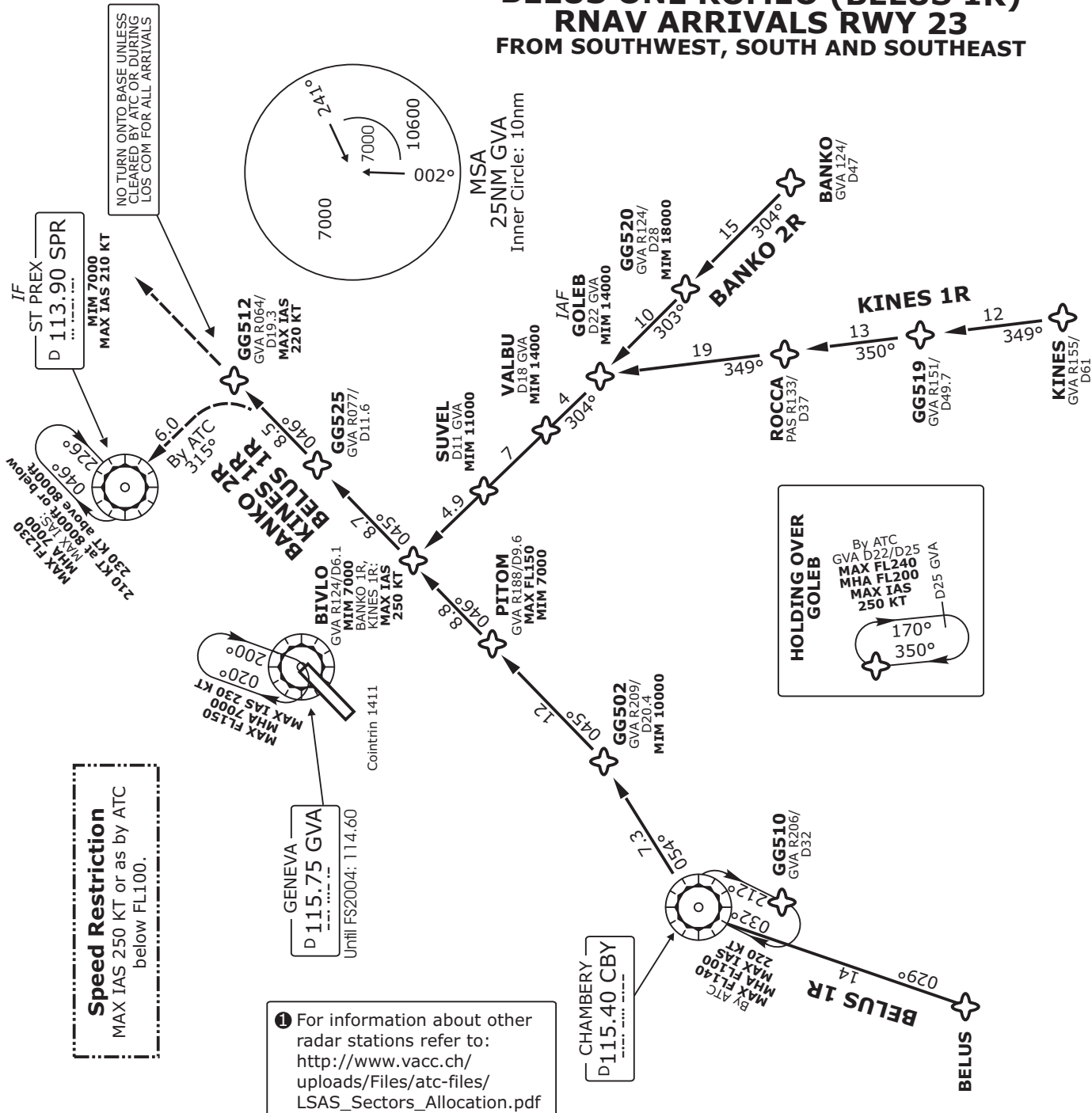


ATIS 135.57	Swiss Radar LSAS_CTR 128.05	Geneva Arrival LSGG_APP 131.32	Geneva Final LSGG_F_APP 120.30	Trans level: By ATC	Trans alt: 7000'
----------------	--------------------------------	-----------------------------------	-----------------------------------	---------------------	------------------

**BANKO TWO ROMEO (BANKO 2R)
KINES ONE ROMEO (KINES 1R)
BELUS ONE ROMEO (BELUS 1R)
RNAV ARRIVALS RWY 23
FROM SOUTHWEST, SOUTH AND SOUTHEAST**



Valid for flight simulation use only - do not use for real life navigation

This chart must only be provided on www.vacc.ch or www.vacc.ch.org. Please inform us if you've downloaded it somewhere else.

Changes: Layout, speed limitations

STAR	ROUTING
BANKO 2R	FROM BANKO proceed via GG520, GOLEB (IAF), VALBU, SUVEL, BIVLO (MAX IAS 250 KT), GG525, GG512 (MAX IAS 220 KT). Continue on track. On ATC instruction, proceed to SPR (IF, MAX IAS 210 KT). Intercept FINAL APCH 23.
KINES 1R	From KINES proceed via GG519, ROCCA, GOLEB (IAF), VALBU, SUVEL, BIVLO (MAX IAS 250 KT), GG525, GG512 (MAX IAS 220 KT). Continue on track. On ATC instruction, proceed to SPR (IF, MAX IAS 210 KT) Intercept FINAL APCH 23.
BELUS 1R	From BELUS proceed via CBY (IAF), GG502, PITOM, BIVLO, GG525, GG512. Continue on track. On ATC instruction, proceed to SPR (IF, MAX IAS 210 KT). Intercept FINAL APCH 23.