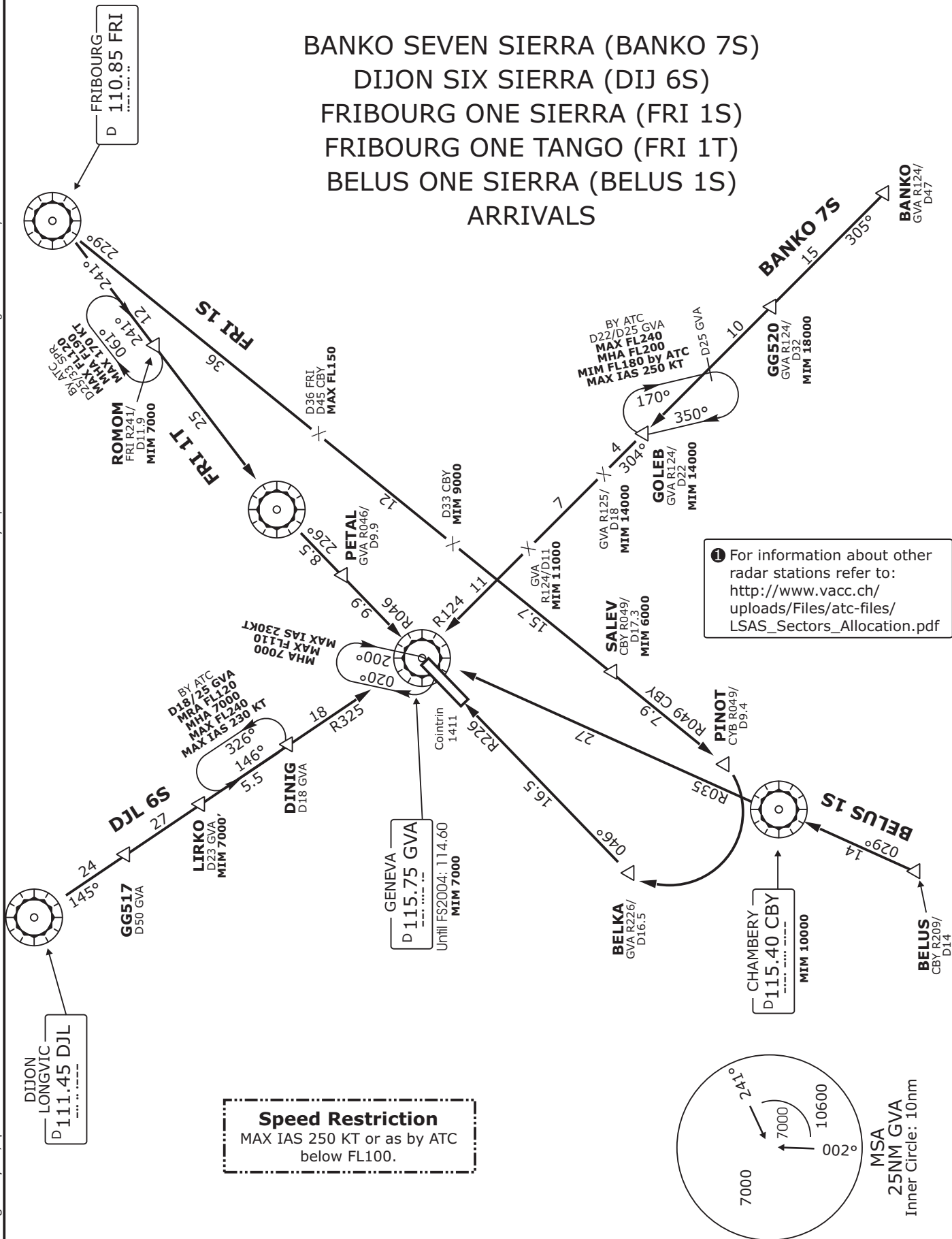


ATIS 135.57	Swiss Radar LSAS_CTR 128.05	Geneva Arrival LSGG_APP 131.32	Geneva Final LSGG_F_APP 120.30	Trans level: By ATC	Trans alt: 7000'
----------------	--------------------------------	--------------------------------------	--------------------------------------	---------------------	------------------

**BANKO SEVEN SIERRA (BANKO 7S)  
DIJON SIX SIERRA (DIJ 6S)  
FRIBOURG ONE SIERRA (FRI 1S)  
FRIBOURG ONE TANGO (FRI 1T)  
BELUS ONE SIERRA (BELUS 1S)  
ARRIVALS**



Valid for flight simulation use only - do not use for real life navigation

Changes: Layout, speed limitations