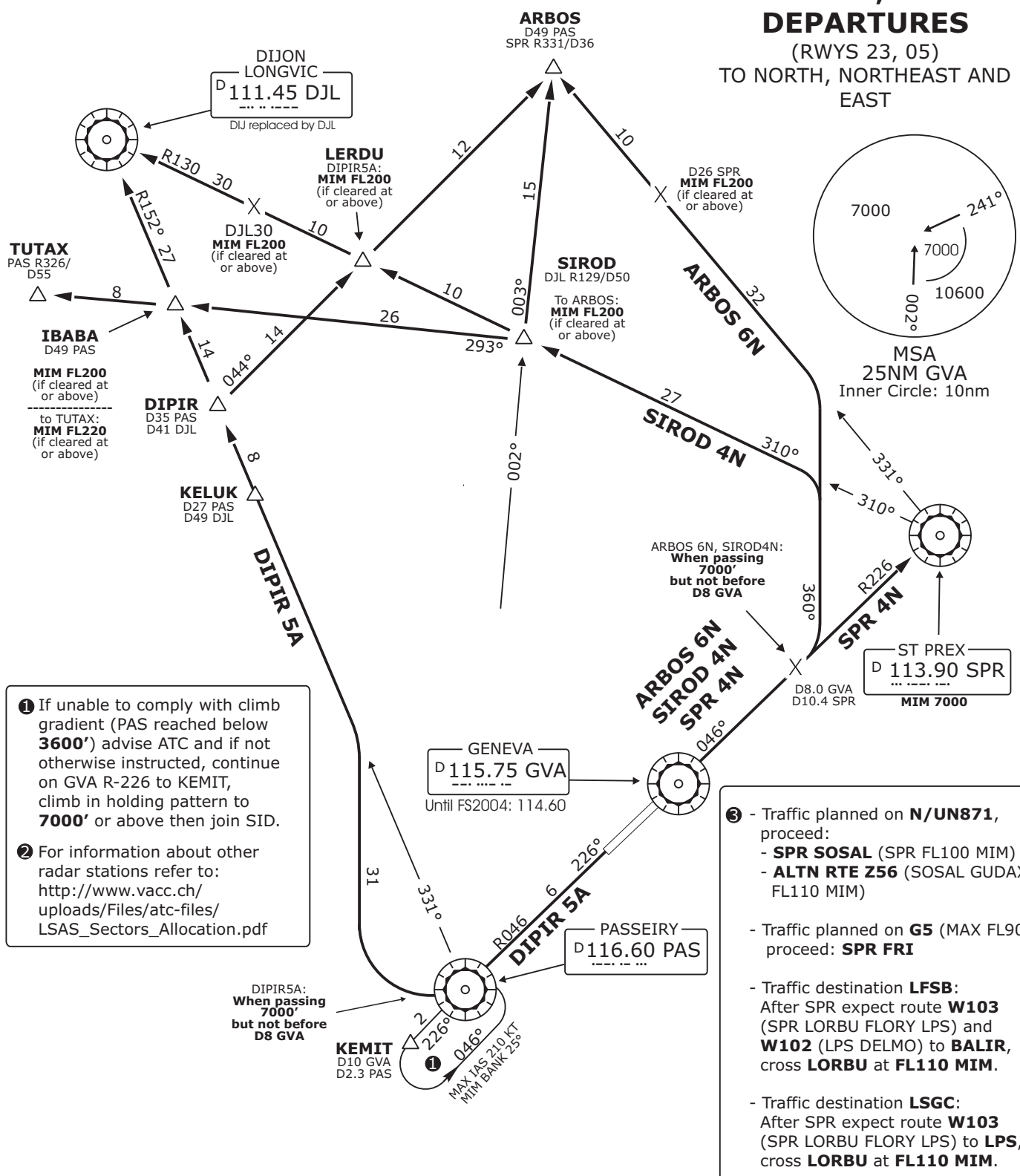


Geneva Departure LSGG_DEP 119.52	Geneva Arrival LSGG_APP 131.32	Swiss Radar LSAS_CTR ② 128.05	Trans level: By ATC Trans alt: 7000'
--	--------------------------------------	-------------------------------------	--------------------------------------

ARBOS, DIPIR, SIROD, SPR DEPARTURES

(RWYS 23, 05)
TO NORTH, NORTHEAST AND EAST



Initial climb clearance FL90

SID	RWY	ROUTING
DIPIR 5A	23	Climb on GVA R-226. When passing 7000', but not before D8 GVA (PAS) turn RIGHT. Intercept PAS R-331. Proceed via KELUK to DIPIR.
ARBOS 6N	05	Climb on GVA R-046. When passing 7000', but not before D8 GVA turn LEFT, 360° track. Intercept SPR R-331 inbound to ARBOS.
SIROD 4N		Climb on GVA R-046. when passing 7000', but not before D8 GVA turn LEFT, 360° track. Intercept DJL R-130 inbound to SIROD.
SPR 4N		Climb on GVA R-046 to SPR. Cross SPR at or above 7000'.

Valid for flight simulation use only - do not use for real life navigation

This chart must only be provided on www.vacc.ch or www.vateud.org. Please inform us if you've downloaded it somewhere else.

Changes: All SIDs revised