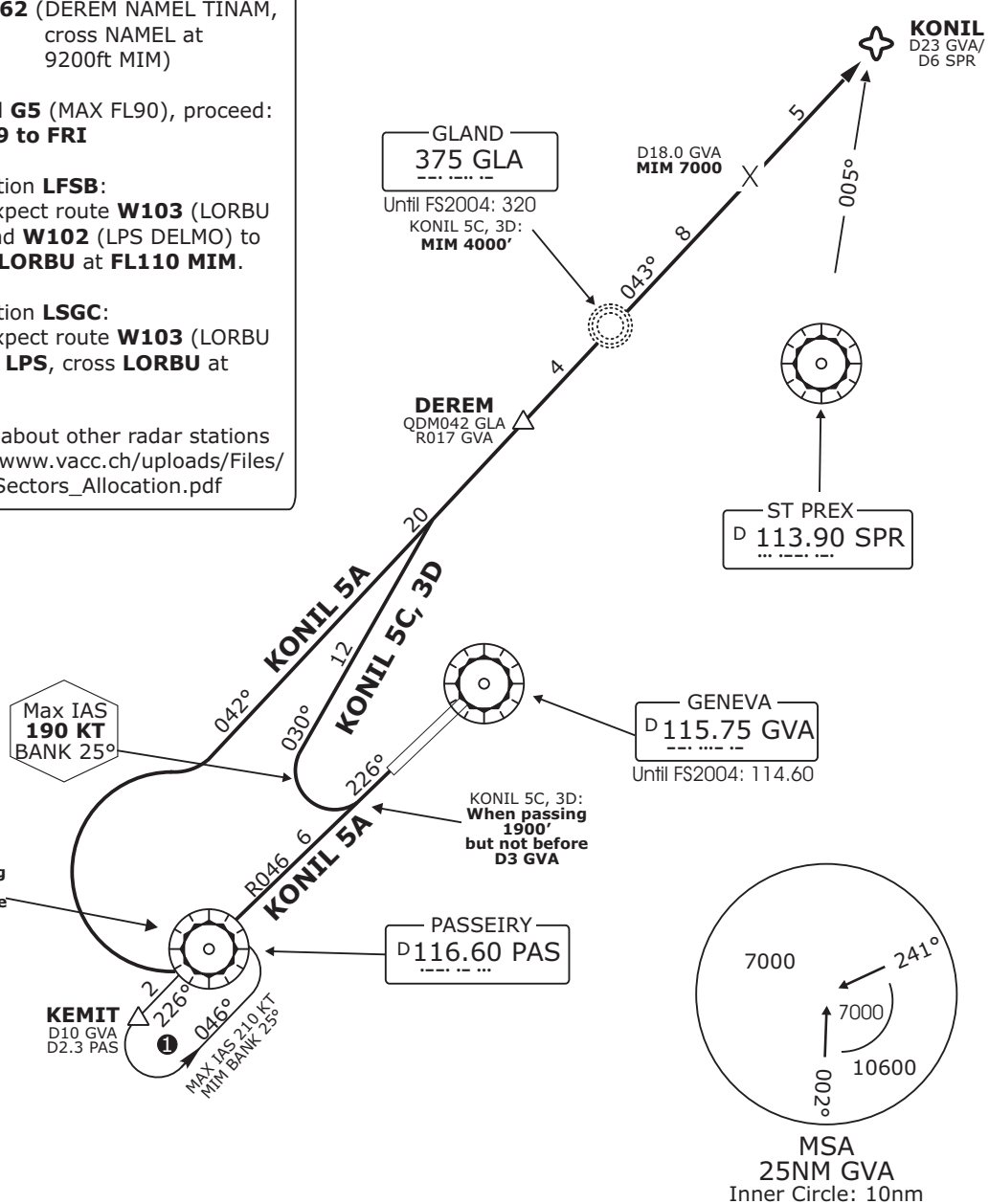


Geneva Departure LSGG_DEP 119.52	Geneva Arrival LSGG_APP 131.32	Swiss Radar LSAS_CTR 128.05	Trans level: By ATC Trans alt: 7000'
--	--------------------------------------	-----------------------------------	--------------------------------------

**KONIL DEPARTURES**  
(RWY 23)  
TO NORTHEAST AND EAST

- 1 If unable to comply with climb gradient advise ATC and if not otherwise instructed, continue on GVA R-226 to KEMIT, climb in holding pattern to **7000'** or above then join SID.
- 2 - Traffic planned on **N/UN871**, proceed:
  - **Z63** (KONIL SOSAL, FL100 MIM)
  - **ALTN RTE Z56** (SOSAL GUDAX, FL110 MIM)
  - **ALTN RTE Z62** (DEREM NAMEL TINAM, cross NAMEL at 9200ft MIM)
- Traffic planned **G5** (MAX FL90), proceed: **on FRI R-249 to FRI**
- Traffic destination **LFSB**: After KONIL expect route **W103** (LORBU FLORY LPS) and **W102** (LPS DELMO) to **BALIR**, cross **LORBU** at **FL110 MIM**.
- Traffic destination **LSGC**: After KONIL expect route **W103** (LORBU FLORY LPS) to **LPS**, cross **LORBU** at **FL110 MIM**.
- 3 For information about other radar stations refer to: [http://www.vacc.ch/uploads/Files/atc-files/LSAS\\_Sectors\\_Allocation.pdf](http://www.vacc.ch/uploads/Files/atc-files/LSAS_Sectors_Allocation.pdf)



**Initial climb clearance KONIL 5A, KONIL 5C: FL90**  
**Initial climb clearance KONIL 3D: 7000'**

SID	RWY	ROUTING
KONIL 5A ②	23	Climb on GVA R-226 (PAS R-046 inbound). When passing <b>7000'</b> but not before D8 GVA (PAS) turn RIGHT intercept QDM042 GLA. Proceed via DEREM to GLA. Continue on QDR043 GLA to KONIL.
KONIL 5C/ 3D ②		Climb on GVA R-226 (PAS R-046 inbound). When passing <b>1900'</b> but not before D3 GVA (D4.7 INBD PAS) turn RIGHT (MAX IAS 190 KT, bank 25°) 030° track, intercept QDM042 GLA. Proceed via DEREM to GLA. Continue on QDR043 GLA to KONIL. Cross <b>GLA</b> at <b>4000' MIM</b> and <b>D18.0 GVA</b> at <b>7000' MIM</b> .

Valid for flight simulation use only - do not use for real life navigation

This chart must only be provided on www.vacc.ch or www.vacc.ch.org. Please inform us if you've downloaded it somewhere else.

Changes: Designators and ballflag 2 changed