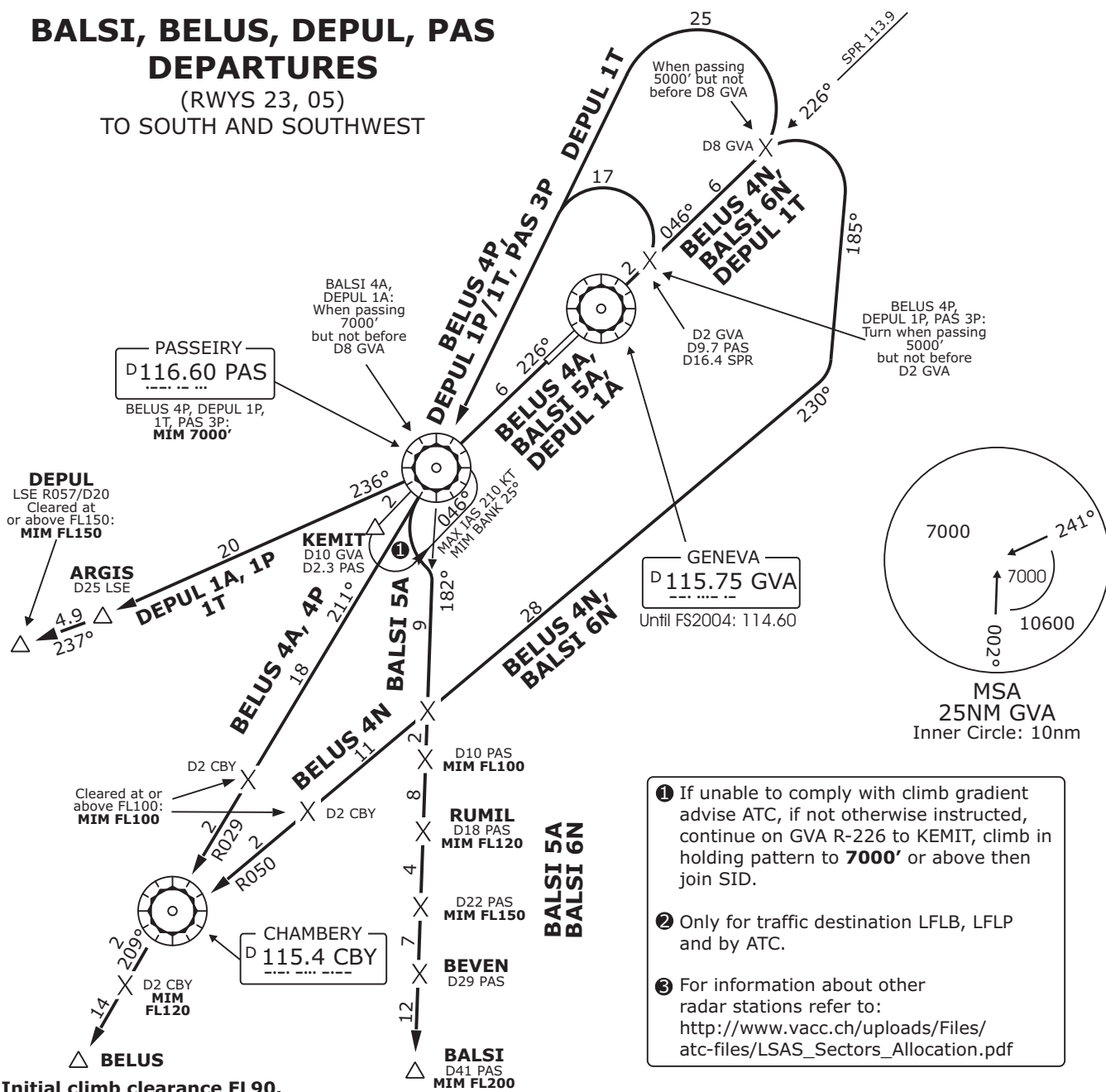


Geneva Departure LSGG_DEP 119.52	Geneva Arrival LSGG_APP 131.32	Swiss Radar LSAS_CTR 128.05	Trans level: By ATC Trans alt: 7000'
--	--------------------------------------	-----------------------------------	--------------------------------------

BALSI, BELUS, DEPUL, PAS DEPARTURES

(RWYS 23, 05)
TO SOUTH AND SOUTHWEST



- 1 If unable to comply with climb gradient advise ATC, if not otherwise instructed, continue on GVA R-226 to KEMIT, climb in holding pattern to 7000' or above then join SID.
- 2 Only for traffic destination LFLB, LFLP and by ATC.
- 3 For information about other radar stations refer to: http://www.vacc.ch/uploads/Files/atc-files/LSAS_Sectors_Allocation.pdf

Initial climb clearance FL90.

SID	RWY	ROUTING	ALTITUDE
BELUS 4A	23	Climb on GVA R-226 to D8 GVA (PAS), thrn LEFT, intercept PAS R-211 to CBY, CBY R-209 to BELUS.	If cleared FL at or above FL100 :
BELUS 4N		Climb on GVA R-046, when passing 5000', but not before D8 GVA turn RIGHT, 185° track, intercept CBY R-050 inbound to CBY, CBY R-209 to BELUS.	Cross D3 INBD CBY at FL100 MIM. Cross D2 past CBY at FL120 MIM.
BELUS 4P	05	Climb on GVA R-046, when passing 5000', but not before D2 GVA turn LEFT to PAS, PAS R211 to CBY, CBY R-209 to BELUS.	If cleared FL at or above FL100 : Cross D3 INBD CBY at FL100 MIM. Cross D2 past CBY at FL120 MIM.
PAS 3P		Climb on GVA R-046 (SPR R-226 inbound), when passing 5000' but not before D2 GVA (D9.7 PAS) turn LEFT to PAS.	Cross PAS VORDME at 7000' MIM.
DEPUL 1A	23	Climb on GVA R-226, when passing 7000', but not before D8 GVA (PAS) turn RIGHT, PAS R-236 via ARGIS tp DEPUL.	If cleared FL a or above FL150 : Cross DEPUL at FL150 MIM.
DEPUL 1T		Climb on GVA R-046, when passing 5000', but not before D8 GVA turn LEFT to PAS, then to ARGIS, then to DEPUL.	Cross PAS VORDME at 7000' MIM.
DEPUL 1P	05	Climb on GVA R-046, when passing 5000', but not before D2 GVA turn LEFT to PAS, PAS R-236. proceed via ARGIS to DEPUL.	If cleared FL at or above FL150 : Cross DEPUL at FL150 MIM.
BALSI 5A	23	Climb on GVA R-226, when passing 7000', but not before D8 GVA (PAS) turn LEFT, intercept PAS R-182. Proceed via RUMIL and BEVEN to BALSI.	Cross D10 PAS at FL100 MIM, RUMIL PAS FL120 MIM, D22 PAS FL150 MIM, BEVEN PAS FL160 MIM, BALSI at FL200 MIM.
BALSI 6N	05	Climb on GVA R-046, when passing 5000', but not before D8 GVA turn RIGHT 185° track. Intercept CBY R-050 inbound, intercept PAS R-182. Proceed via RUMIL and BEVEN to BALSI.	

Valid for flight simulation use only - do not use for real life navigation

Changes: Adapted for transition to vACC Switzerland