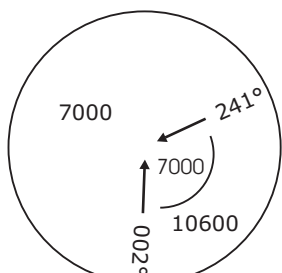


Geneva Departure LSGG_DEP 119.52	Geneva Arrival LSGG_APP 131.32	Swiss Radar LSAS_CTR ② 128.05	Trans level: By ATC Trans alt: 7000'
--	--------------------------------------	-------------------------------------	--------------------------------------

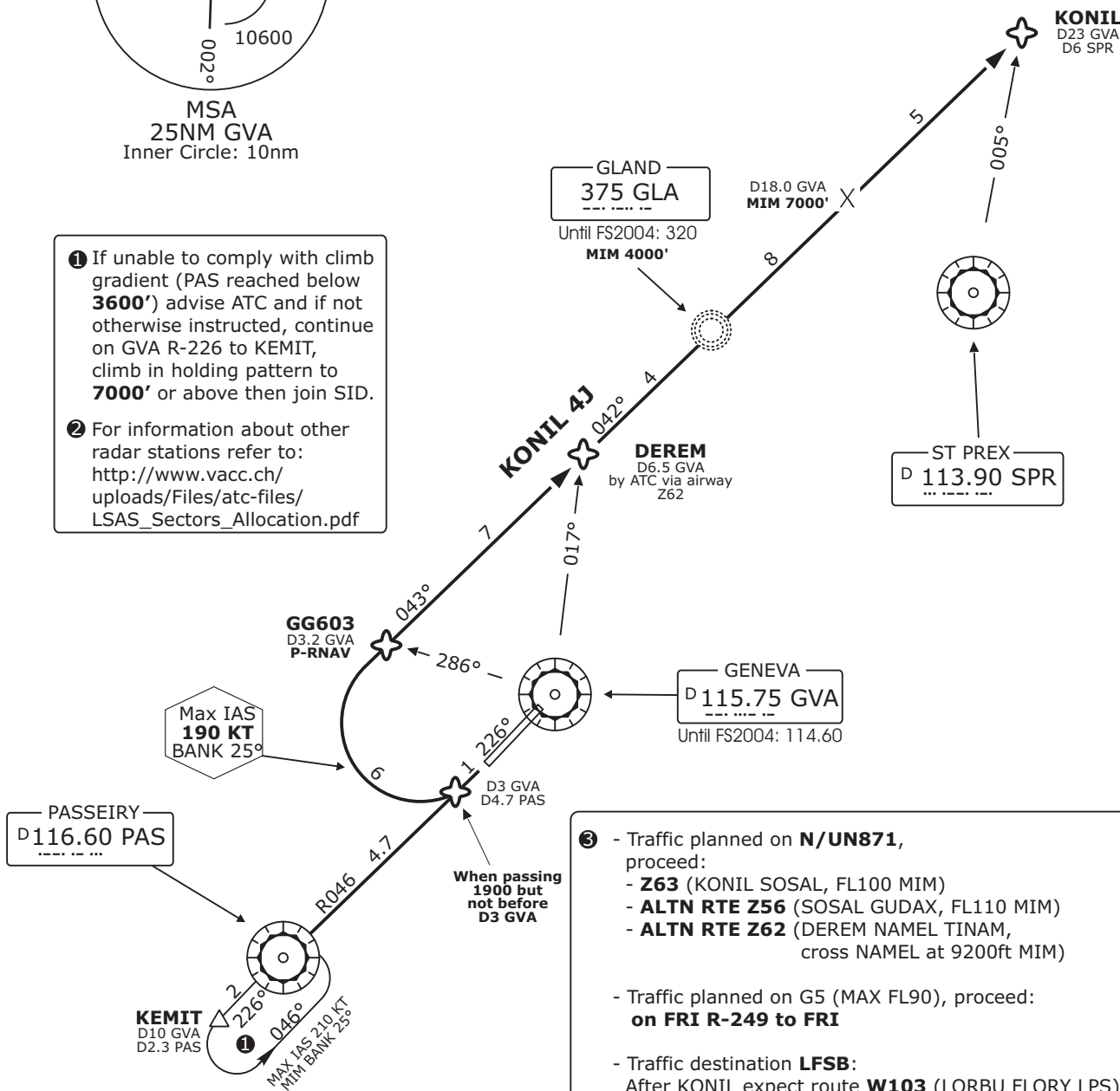
## KONIL FOUR JULIETT (KONIL 4J) DEPARTURES

(RWY 23)  
TO EAST AND NORTHEAST



MSA  
25NM GVA  
Inner Circle: 10nm

- ① If unable to comply with climb gradient (PAS reached below **3600'**) advise ATC and if not otherwise instructed, continue on GVA R-226 to KEMIT, climb in holding pattern to **7000'** or above then join SID.
- ② For information about other radar stations refer to: [http://www.vacc.ch/uploads/Files/atc-files/LSAS\\_Sectors\\_Allocation.pdf](http://www.vacc.ch/uploads/Files/atc-files/LSAS_Sectors_Allocation.pdf)



- ③ - Traffic planned on **N/UN871**, proceed:
  - **Z63** (KONIL SOSAL, FL100 MIM)
  - **ALTN RTE Z56** (SOSAL GUDAX, FL110 MIM)
  - **ALTN RTE Z62** (DEREM NAMEL TINAM, cross NAMEL at 9200ft MIM)
- Traffic planned on G5 (MAX FL90), proceed:
  - on **FRI R-249** to **FRI**
- Traffic destination **LFSB**:
  - After KONIL expect route **W103** (LORBU FLORY LPS) and **W102** (LPS DELMO) to **BALIR**, cross **LORBU** at **FL110 MIM**.
- Traffic destination **LSGC**:
  - After KONIL expect route **W103** (LORBU FLORY LPS) to **LPS**, cross **LORBU** at **FL110 MIM**.

**Initial climb clearance FL90**

SID	RWY	ROUTING	ALTITUDE
KONIL 4J ③	23	Climb on GVA R-226. When passing <b>1900'</b> , but not before D3 GVA (D4.7 PAS) turn RIGHT (MNM bank 25°, MAX IAS 190 KT until passing GG603). Proceed via GG603 and DEREM to KONIL.	Cross GLA at <b>4000' MIM</b> , D18.0 GVA at <b>7000' MIM</b>

Valid for flight simulation use only - do not use for real life navigation

This chart must only be provided on www.vacc.ch or www.vateud.org. Please inform us if you've downloaded it somewhere else.

Changes: SID revised, ballflag 3 changed