

Changes: All SIDs revised (MIM after ESAPI changed)

Valid for flight simulation use only - do not use for real life navigation

© VACC Switzerland 09-2010 www.vacc.ch

Raffael WALTHER <charts@vacc.ch>

concept by Christoph Winkler

GENEVA
D 115.75 GVA
Until FS2004: 114.60

PASSEIRY
D 116.60 PAS

When passing 7000' but not before D8 GVA

KEMIT
D10 GVA
D2.3 PAS

GENEVA
D 115.75 GVA
Until FS2004: 114.60

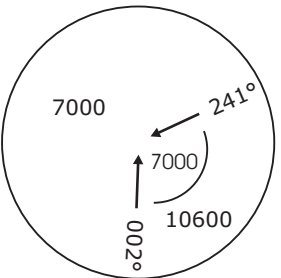
When passing 5000' but not before D8 GVA

MEDAM
4N, 4P, 4Q

MEDAM
4A, 4B, 4C

115.40
CBY 050°

GG604
CBY R050/
D30



MSA
25NM GVA
Inner Circle: 10nm

- 1 If unable to comply with climb gradient (PAS reached below 3600') advise ATC and if not otherwise instructed, continue on GVA R-226 to KEMIT, climb in holding pattern to 7000' or above then join SID.
- 2 For information about other radar stations refer to: http://www.vacc.ch/uploads/Files/atc-files/LSAS_Sectors_Allocation.pdf

MEDAM DEPARTURES
(RWYS 23, 05)
TO SOUTH AND SOUTHEAST

Initial climb clearance FL90

SID	RWY	ROUTING
MEDAM 4A, 4B, 4C	23	Climb on GVA R-226. When passing 7000', but not before D8 GVA (PAS) turn LEFT, intercept PAS R-143. Proceed via ESAPI and VANAS to MEDAM.
MEDAM 4N, 4P, 4Q	05	Climb on GVA R-046. When passing 5000', but not before D8 GVA turn RIGHT, 185° track to intercept CBY R-050. At GG604, turn LEFT, 184° track to intercept PAS R-143. Proceed via ESAPI and VANAS to MEDAM.
SID	ALTITUDE	
MEDAM 4A	Cross D9 PAS at FL100 MIM, D16 PAS at FL110 MIM, ESAPI at FL140 MIM, D27 PAS at FL180 MIM, VANAS FL200 MIM.	
MEDAM 4B	Cross D9 PAS at FL100 MIM, D16 PAS at FL120 MIM, ESAPI at FL150 MIM, D27 PAS at FL180 MIM, VANAS FL200 MIM.	
MEDAM 4C	Cross D9 PAS at FL100 MIM, D16 PAS at FL130 MIM, ESAPI at FL160 MIM, D27 PAS at FL180 MIM, VANAS FL200 MIM.	
MEDAM 4N	Cross ESAPI at FL140 MIM, D27 PAS at FL180 MIM, VANAS FL200 MIM.	
MEDAM 4P	Cross ESAPI at FL150 MIM, D27 PAS at FL180 MIM, VANAS FL200 MIM.	
MEDAM 4Q	Cross ESAPI at FL160 MIM, D27 PAS at FL180 MIM, VANAS FL200 MIM.	

This chart must only be provided on www.vacc.ch or www.vateud.org. Please inform us if you've downloaded it somewhere else.

Geneva Departure LSGG_DEP 119.52	Geneva Arrival LSGG_APP 131.32	Swiss Radar LSAS_CTR 128.05
--	--------------------------------------	-----------------------------------

SID CHART NO.5
Revision 09 OKT 10
Trans level: By ATC Trans alt: 7000'

GENEVA, SWITZERLAND
NON-RNAV SID