

Valid for flight simulation use only - do not use for real life navigation

Changes: All SIDs revised (MIM after ODIKI changed)

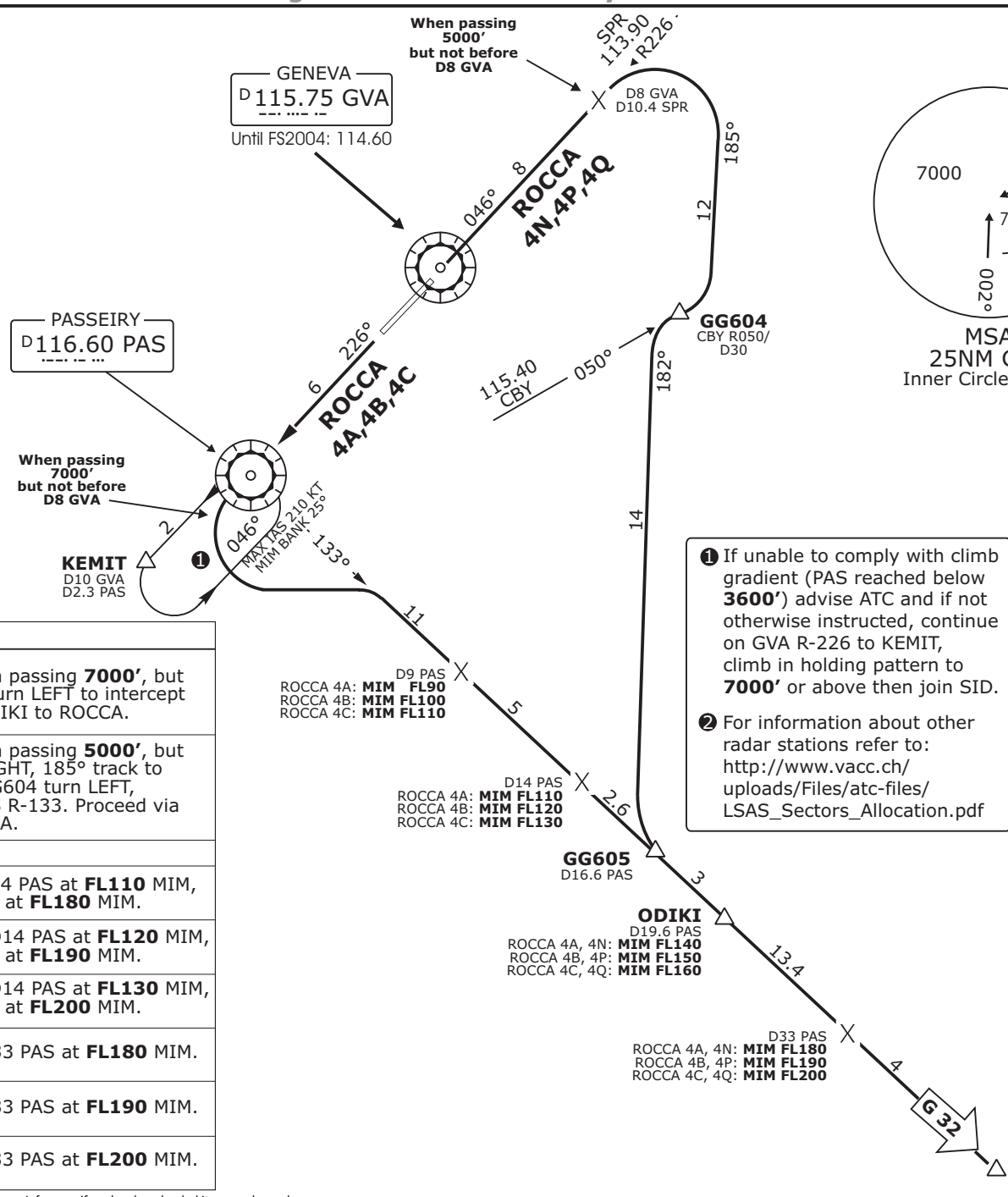
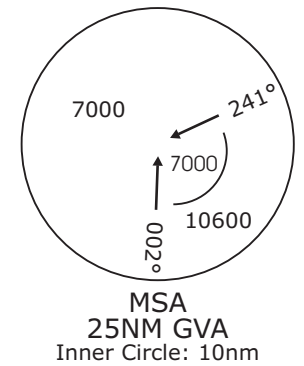
LSGG GENEVA

SID CHART NO.6  
Revision 19 SEP 10

GENEVA, SWITZERLAND  
NON-RNAV SID

Geneva Departure LSGG_DEP 119.52	Geneva Arrival LSGG_ARR 131.32	Swiss Radar LSAS_CTR 128.05
--	--------------------------------------	-----------------------------------

Trans level: By ATC Trans alt: 7000'



- 1 If unable to comply with climb gradient (PAS reached below 3600') advise ATC and if not otherwise instructed, continue on GVA R-226 to KEMIT, climb in holding pattern to 7000' or above then join SID.
- 2 For information about other radar stations refer to: [http://www.vacc.ch/uploads/Files/atc-files/LSAS\\_Sectors\\_Allocation.pdf](http://www.vacc.ch/uploads/Files/atc-files/LSAS_Sectors_Allocation.pdf)

**ROCCA DEPARTURES**  
(RWYS 23, 05)  
ONLY FOR FLIGHTS WITH DESTINATION  
OR OVERFLYING ITALY PLANNED  
BELOW FL200 (AIRWAY G32)  
TO SOUTHEAST

Initial climb clearance FL90

SID	RWY	ROUTING
ROCCA 4A, 4B, 4C	23	Climb on GVA R-226. When passing 7000', but not before D8 GVA (PAS) turn LEFT to intercept PAS R-133. Proceed via ODIKI to ROCCA.
ROCCA 4N, 4P, 4Q	05	Climb on GVA R-046. When passing 5000', but not before D8 GVA turn RIGHT, 185° track to intercept CBY R-050. At GG604 turn LEFT, 184° track to intercept PAS R-133. Proceed via GG605 and ODIKI to ROCCA.
SID	ALTITUDE	
ROCCA 4A	Cross D9 PAS at <b>FL90</b> MIM, D14 PAS at <b>FL110</b> MIM, ODIKI at <b>FL140</b> MIM, D33 PAS at <b>FL180</b> MIM.	
ROCCA 4B	Cross D9 PAS at <b>FL100</b> MIM, D14 PAS at <b>FL120</b> MIM, ODIKI at <b>FL150</b> MIM, D33 PAS at <b>FL190</b> MIM.	
ROCCA 4C	Cross D9 PAS at <b>FL110</b> MIM, D14 PAS at <b>FL130</b> MIM, ODIKI at <b>FL160</b> MIM, D33 PAS at <b>FL200</b> MIM.	
ROCCA 4N	Cross ODIKI at <b>FL140</b> MIM, D33 PAS at <b>FL180</b> MIM.	
ROCCA 4P	Cross ODIKI at <b>FL150</b> MIM, D33 PAS at <b>FL190</b> MIM.	
ROCCA 4Q	Cross ODIKI at <b>FL160</b> MIM, D33 PAS at <b>FL200</b> MIM.	

This chart must only be provided on www.vacc.ch or www.vateud.org. Please inform us if you've downloaded it somewhere else.

© VACC Switzerland 09-2010 www.vacc.ch  
Raffael WALTHER <charts@vacc.ch>  
concept by Christoph Winkler