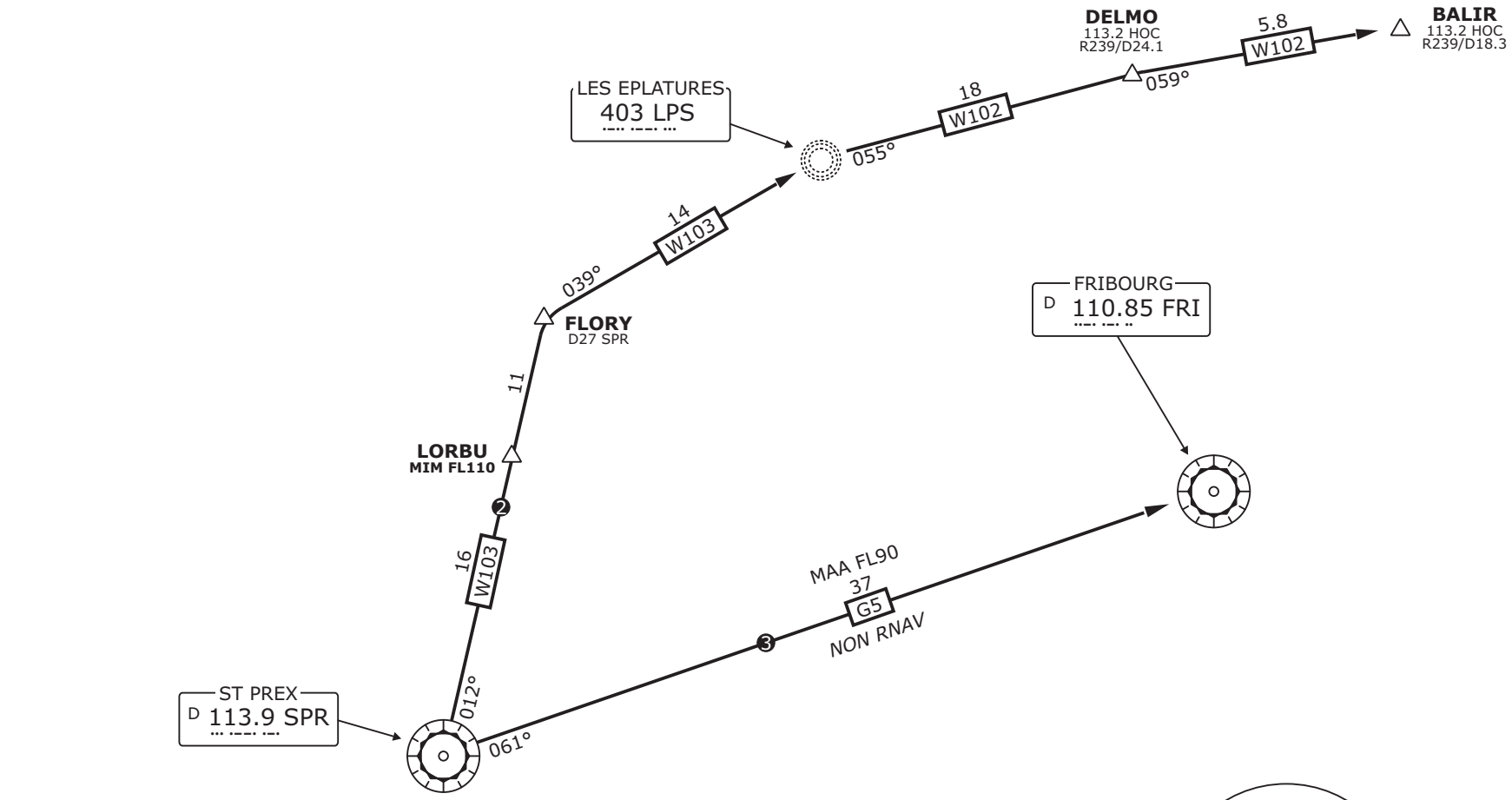


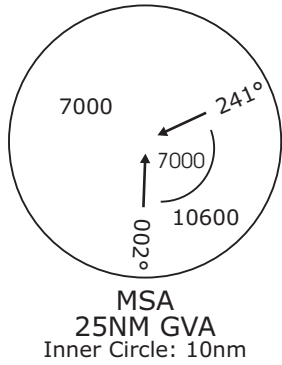
Geneva Departure LSGG_DEP 119.52	Geneva Arrival LSGG_APP 131.32	Swiss Radar LSAS_CTR ① 128.05
--	--------------------------------------	-------------------------------------

Trans level: By ATC Trans alt: 7000'

**DEPARTURE ROUTES AFTER
SPR**
For flights planned
at or above FL100



- ① For information about other radar stations refer to:
http://www.vacc.ch/uploads/Files/atc-files/LSAS_Sectors_Allocation.pdf
- ② **Traffic destination LFSB:**
Expect route via airways **W103** and **W102** (SPR - Flory - LPS - DELMO) to BALIR, Cross LORBU at **FL110** MIM.
- ③ **Traffic planned on airway G5 (MAA FL90)**
After SPR via **G5** to FRI.



ST PREX
D 113.9 SPR

GENEVA
D 115.75 GVA
Until FS2004: 114.60

