

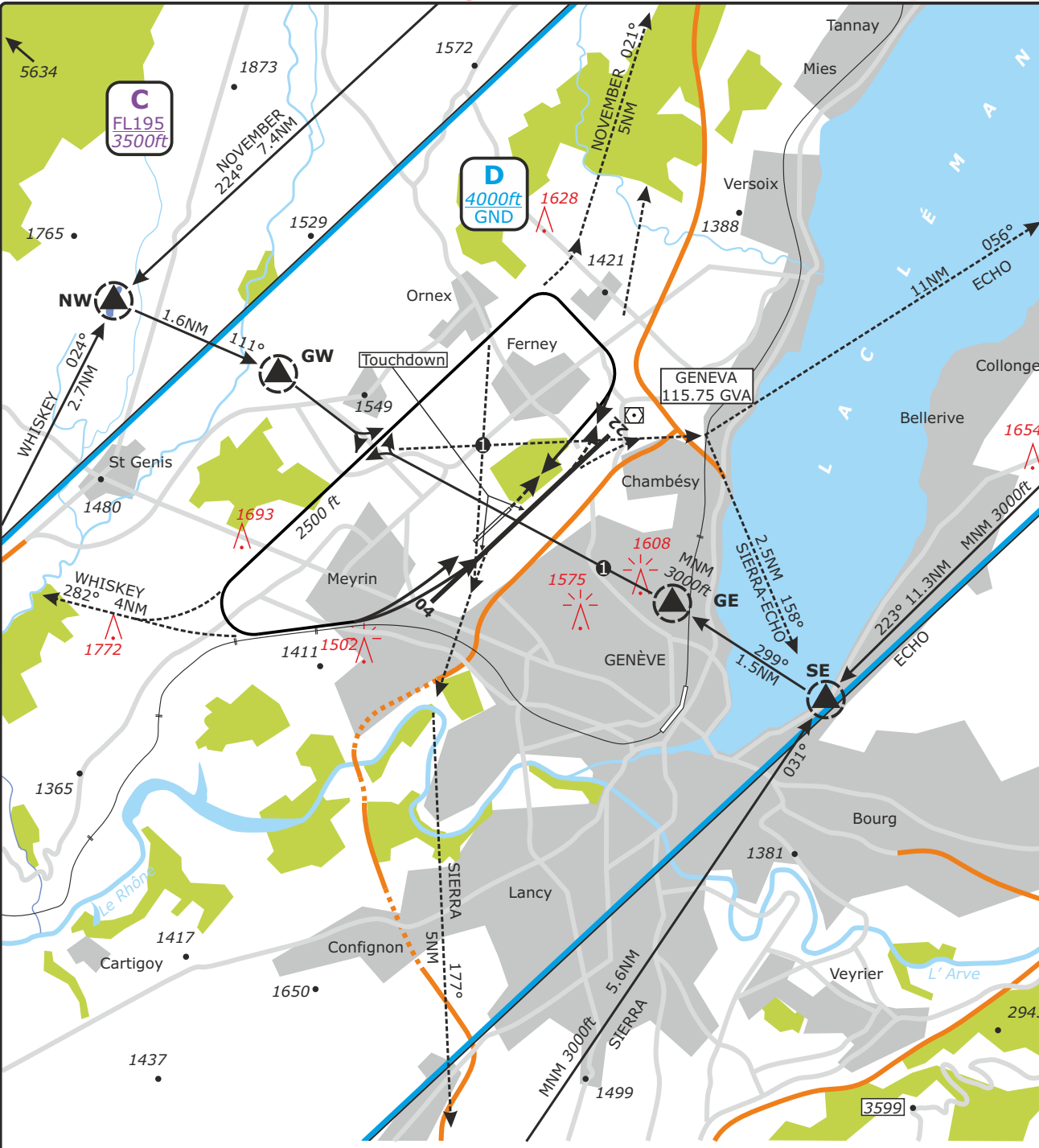
SWISS Information LSAS, I_CTR 124.70	GENEVA Tower LSGG, TWR 118.70	GENEVA Apron LSGG, A_GND 121.85	GENEVA Ground LSGG, GND 121.67	GENEVA ATIS LSGG, ATIS 135.57	Apt Elev 1411
--	-------------------------------------	---------------------------------------	--------------------------------------	-------------------------------------	-------------------------

LSGG/GVA
GENEVA, SWITZERLAND

VAC CHART NO.1
Revision 13 SEP 18

VAC
VFR AREA

DISTANCES IN NM
ALTITUDES IN FT



GRASS RWY:
Autorisée aux ACFT monomoteurs jusqu'à 2000kg MTOW
Authorized for 1-engine ACFT up to 2000kg MTOW

CONC RWY:
Joindre la RCL au survol du THR et atterrir au Touchdown 1-engine ACFT
Join RCL when overflying THR and land at touchdown 1-engine ACFT

Routes de départs VFR/VFR departure routes

NOVEMBER: AD circuit - 021° - N
WHISKEY: AD circuit - 282° - W
ECHO: (AD circuit) and of RWY 04 - highway junction - 056° - E
SIERRA-ECHO: (AD circuit) - end of RWY 04 - highway junction - 158° - SE
SIERRA: (AD circuit) - overhead TWY E - Rhône - 177° - S

CTC RDO obligatoire 5 min avant ETO N, W, E, S
RDO CTC compulsory 5 min prior ETO N, W, E, S

Routes d'arrivée VFR/VFR arrival routes:

NOVEMBER: N - 224° - NW - 111° - GW **MNM 3000ft**
WHISKEY: W - 024° - NW - 111° - GW **MNM 3000ft**
ECHO: E - 223° - SE - 299° - GE **MNM 3000ft**
SIERRA: S - 031° - SE - 299° - GE **MNM 3000ft**

MAX 3500ft

Autorisation de survol obligatoire
Overflight clearance compulsory

OBST ELEV: ft

N 46° 21' 16" N / 006° 09' 09" E	GVA R006, D6.1
E 46° 20' 50" N / 006° 21' 47" E	GVA R058, D11.1
W 46° 13' 43" N / 005° 59' 42" E	GVA R253, D5.9
S 46° 08' 01" N / 006° 05' 58" E	GVA R189, D7.3
SW 46° 07' 19" N / 005° 53' 57" E	GVA R229, D12.5
NW 46° 16' 09" N / 006° 01' 24" E	GVA R279, D4.6
GW 46° 15' 32" N / 006° 03' 31" E	GVA R274, D3.1
SE 46° 12' 46" N / 006° 10' 21" E	GVA R144, D3.0
GE 46° 13' 34" N / 006° 08' 28" E	GVA R165, D1.7

Altitudes en ft; Hautuers en ft
Altitudes in ft; Heights in ft

SWISS Information LSAS_I_CTR 124.70	GENEVA Tower LSGG_TWR 118.70	GENEVA Apron LSGG_A_GND 121.85	GENEVA Ground LSGG_GND 121.67	GENEVA ATIS LSGG_ATIS 135.57	Apt Elev 1411
---	------------------------------------	--------------------------------------	-------------------------------------	------------------------------------	-------------------------