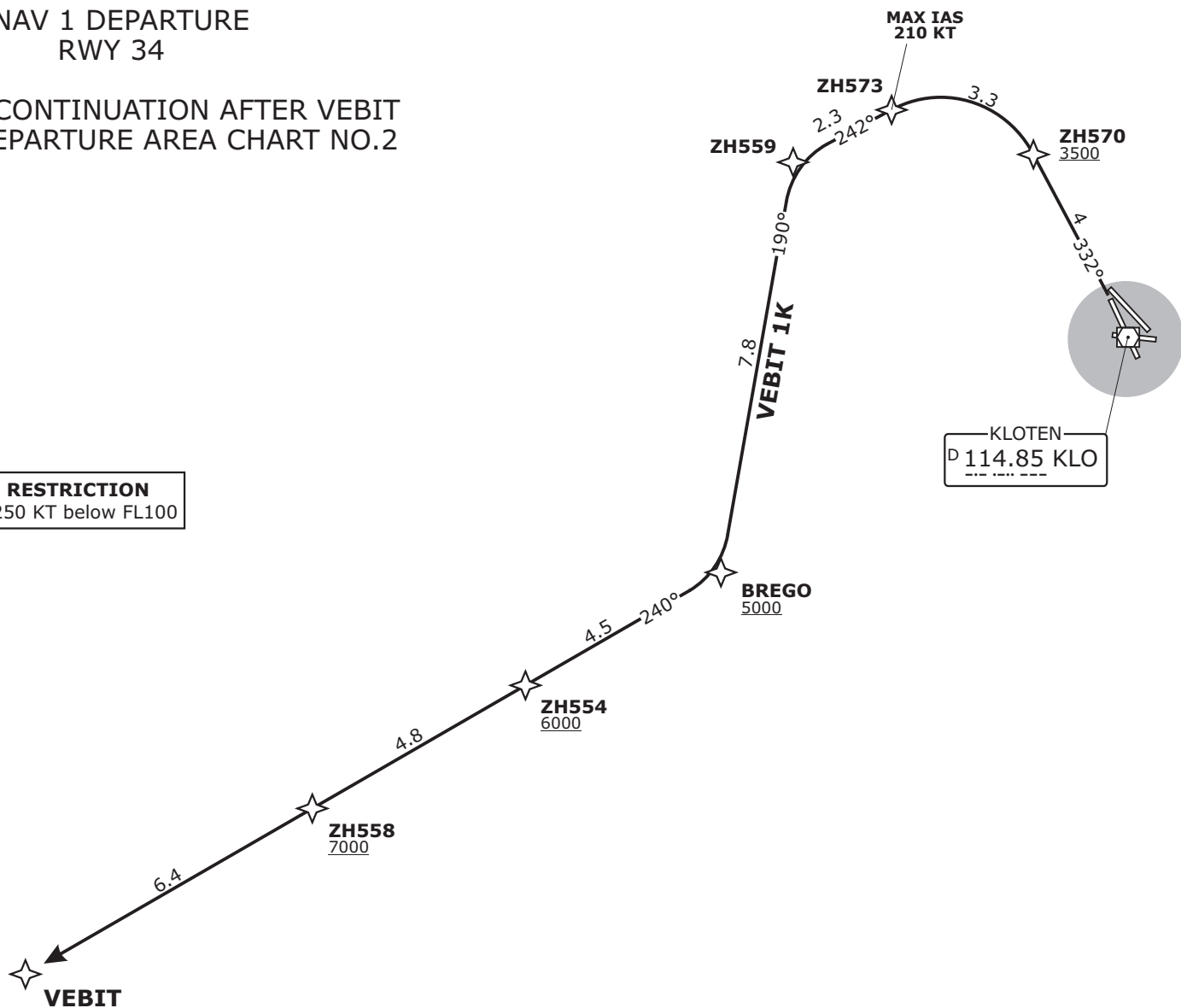


**VEBIT**  
RNAV 1 DEPARTURE  
RWY 34

FOR ROUTE CONTINUATION AFTER VEBIT  
REFER TO DEPARTURE AREA CHART NO.2

**SPEED RESTRICTION**  
MAX IAS 250 KT below FL100

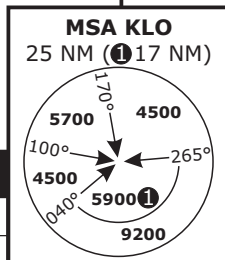


Altitude and speed restrictions see graphical chart

**Initial climb clearance 5000**

SID	RWY	ROUTING
<b>VEBIT 1K</b>	<b>34</b>	Climb on track 332°. Proceed via ZH570, ZH573, ZH559, BREGO, ZH554 and ZH558 to VEBIT.

DISTANCES IN NM  
ALTITUDES IN FT



**LSZH/ZRRH**  
ZURICH, SWITZERLAND

SID CHART NO.2  
Revision 12 NOV 15

SWISS Radar LSAS_CTR 128.05	ZURICH App LSZH_APP 135.22	ZURICH Arrival LSZH_W_APP 118.00	ZURICH Departure LSZH_DEP 125.95	Apt Elev <b>1417</b>	Alt Set: hPa (IN on request) Trans level: by ATC Trans alt: 7000
-----------------------------------	----------------------------------	--	--	-------------------------	--

**VEBIT** **SID**