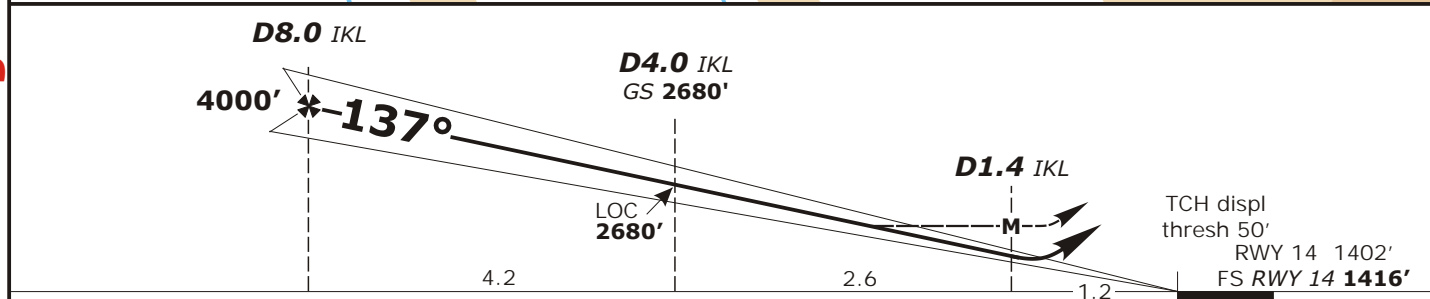
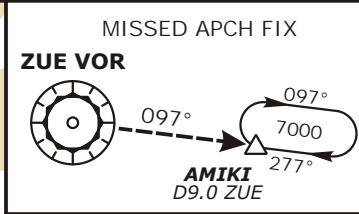
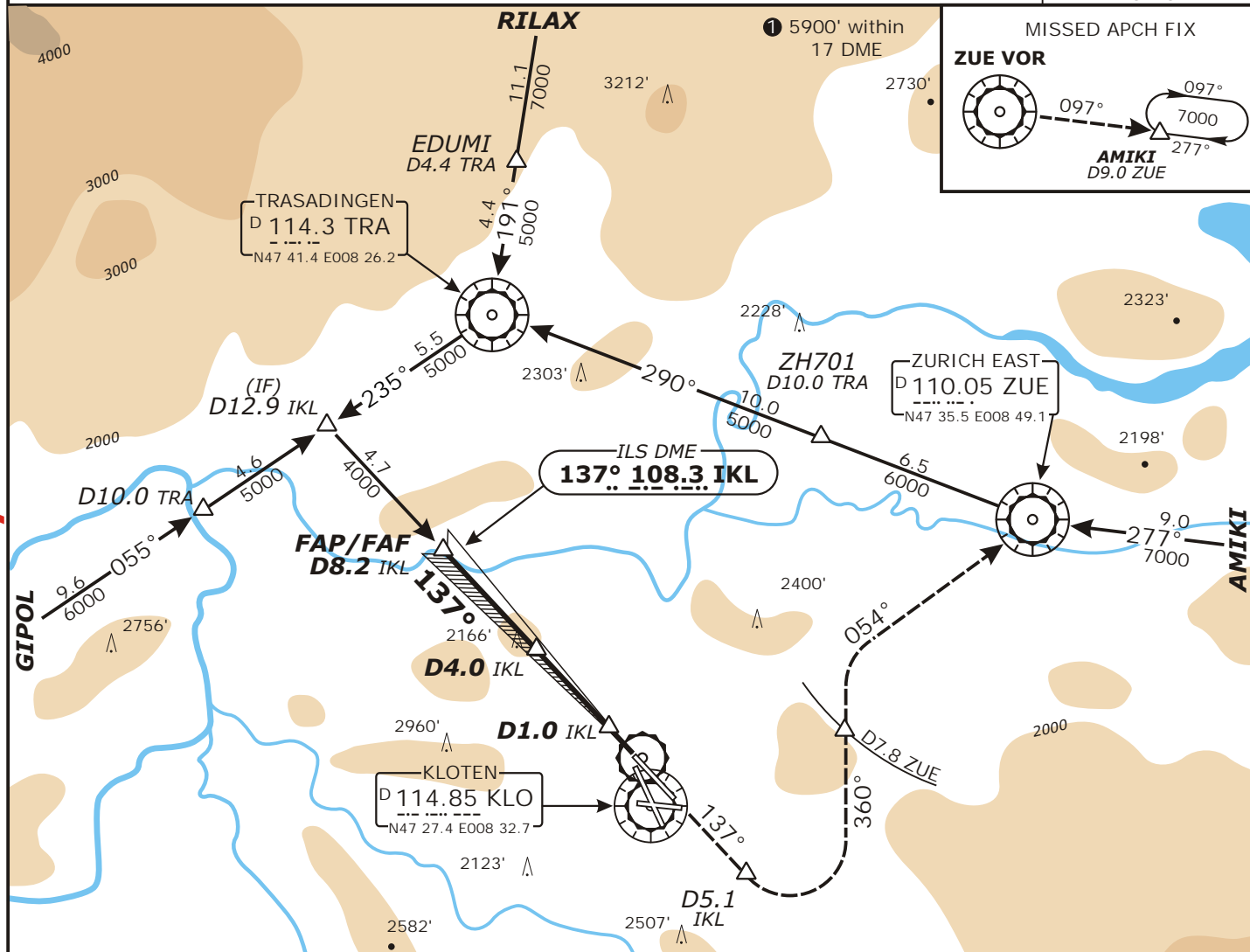
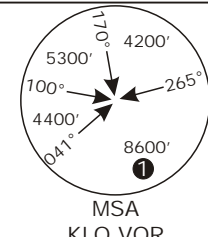


LSZH/ZRH ZURICH

APP CHART NO. 1
Revision 09 APR 09

ZURICH, SWITZERLAND ILS DME Rwy 14 CAT II/III

Swiss Radar LSAS_CTR 128.05	ZURICH Arrival LSZH_APP 120.75	ZURICH Final LSZH_F_APP 125.35	ZURICH Tower LSZH_TWR 118.10	ZURICH Ground LSZH_S_GND 121.75
LOC IKL 108.3	Final Apch Crs 137°	GS D4.0 IKL 2730' (1314')	CAT I : RA 187' DH 1616' (200') CAT II: RA 87' DH 1516' (100')	Apt Elev 1416' FS: RWY 1416 RWY 1402'
MISSED APCH: Climb on track 137°. Initial climb to 4000' . At D5.1 IKL passed the station, turn LEFT (MAX IAS 210 KT) onto track 360° to intercept R-234 ZUE. At D7.8 ZUE continue climb to 7000' . Cross ZUE VOR at 6000' or above and intercept R-097 ZUE to AMIKI.				
Alt Set: hPa	Rwy Elev: 51 hPa	Trans level: By ATC	Trans alt: 7000'	



Flight Simulator-OPS		STRAIGHT-IN LANDING RWY 14		CIRCLE-TO-LAND TO RWYS 10 & 28		Gnd speed-Kts							
MINIMUMS		A	B	C	D			70	90	100	120	140	160
ILS CAT I	RA	195'			Max Kts	Prohibited Southwest of apt btn extended centerlines rwy 16 & 28	ILS GS 3.00° or LOC Descent Gradient 5.2%						
	DH(A)	1616' (200')					377 485 539 647 755 862						
	RVR	550m					MAP at D1.0 IKL (LOC out)						
ILS CAT II	RA	95'			CAT A	110	LOC (GS out) with IKL DME: MDA(H) 1870' (454') RVR 1700m.						
	DH(A)	1516' (100')			CAT B	135	It is pilot's responsibility to accept "swing over" procedure to rwy 16, when proposed by ATC.						
	RVR	300m			CAT C	180	RWY 14 is approved for CAT II/III operations, special aircrew and ACFT certification required.						
				CAT D	180	2710' (1294') 4000m							

Valid for flight simulation use only - do not use for real life navigation

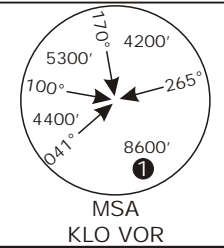
CHANGES: Procedure.

LSZH/ZRH ZURICH

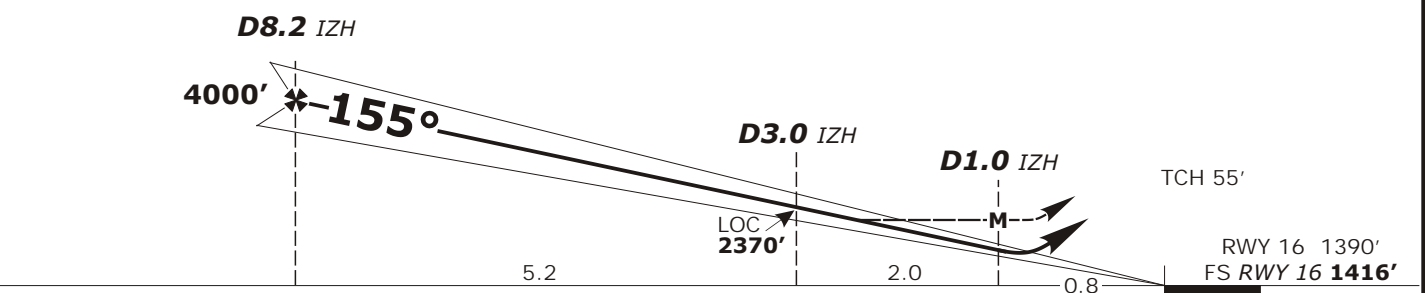
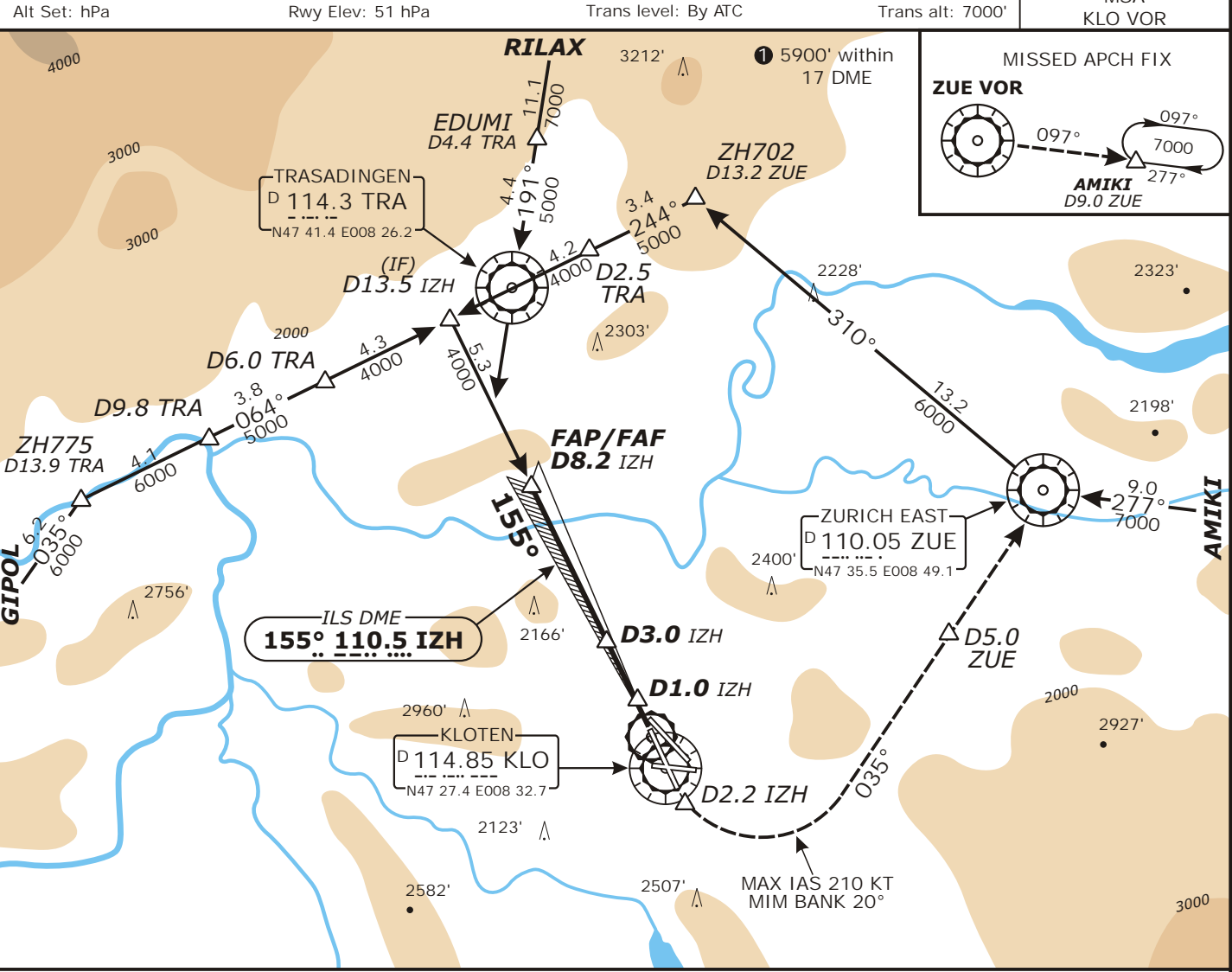
APP CHART NO. 2
Revision 05 JUN 08

ZURICH, SWITZERLAND ILS DME Rwy 16 CAT II/III

Swiss Radar LSAS_CTR 128.05	ZURICH Arrival LSZH_APP 120.75	ZURICH Final LSZH_F_APP 125.35	ZURICH Tower LSZH_TWR 118.10	ZURICH Ground LSZH_S_GND 121.75
LOC IZH 110.5	Final Apch Crs 155°	GS D4.0 IZH 2719' (1303')	CAT I : RA 187' DH 1616' (200') CAT II: RA 93' DH 1516' (100')	Apt Elev 1416' FS: RWY 1416 RWY 1390'



MISSED APCH: Climb on track 155°. Initial climb to **5000'**. At D2.2 IZH passed the station, but not below 1900', turn LEFT (MAX IAS 210 KT/MIM BANK 20°) to intercept R-215 inbound to ZUE. At D5.0 ZUE continue climb to **7000'**. Cross ZUE VOR at 6000' or above and intercept R-097 ZUE to AMIKI.



Flight Simulator-OPS					STRAIGHT-IN LANDING RWY 16					CIRCLE-TO-LAND TO RWYS 10 & 28					Gnd speed-Kts				
MINIMUMS					A	B	C	D						70	90	100	120	140	160
ILS CAT I		RA	187'			Prohibited Southwest of apt btn extended centerlines rwy 16 & 28 MDA(H) _____ VIS _____					ILS GS 3.00° or LOC Descent Gradient 5.2%								
		DH(A)	1616' (200')								377					485	539	647	755
ILS CAT II		RVR	550m			CAT A	110	2360' (944')					MAP at D1.0 IZH (LOC out)						
		RA	93'			CAT B	135	2470' (1054')					LOC (GS out) with IZH DME: MDA(H) 1906' (490')						
		DH(A)	1516' (100')			CAT C	180	2710' (1294')					It is pilot's responsibility to accept "swing over" procedure to rwy 16, when proposed by ATC.						
			300m								RWY 16 is approved for CAT II/III operations, special aircrew and ACFT certification required.								

Valid for flight simulation use only - do not use for real life navigation

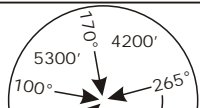
CHANGES: Proc, missed apch.

LSZH/ZRH ZURICH

APP CHART NO.3
Revision 08 JAN 07

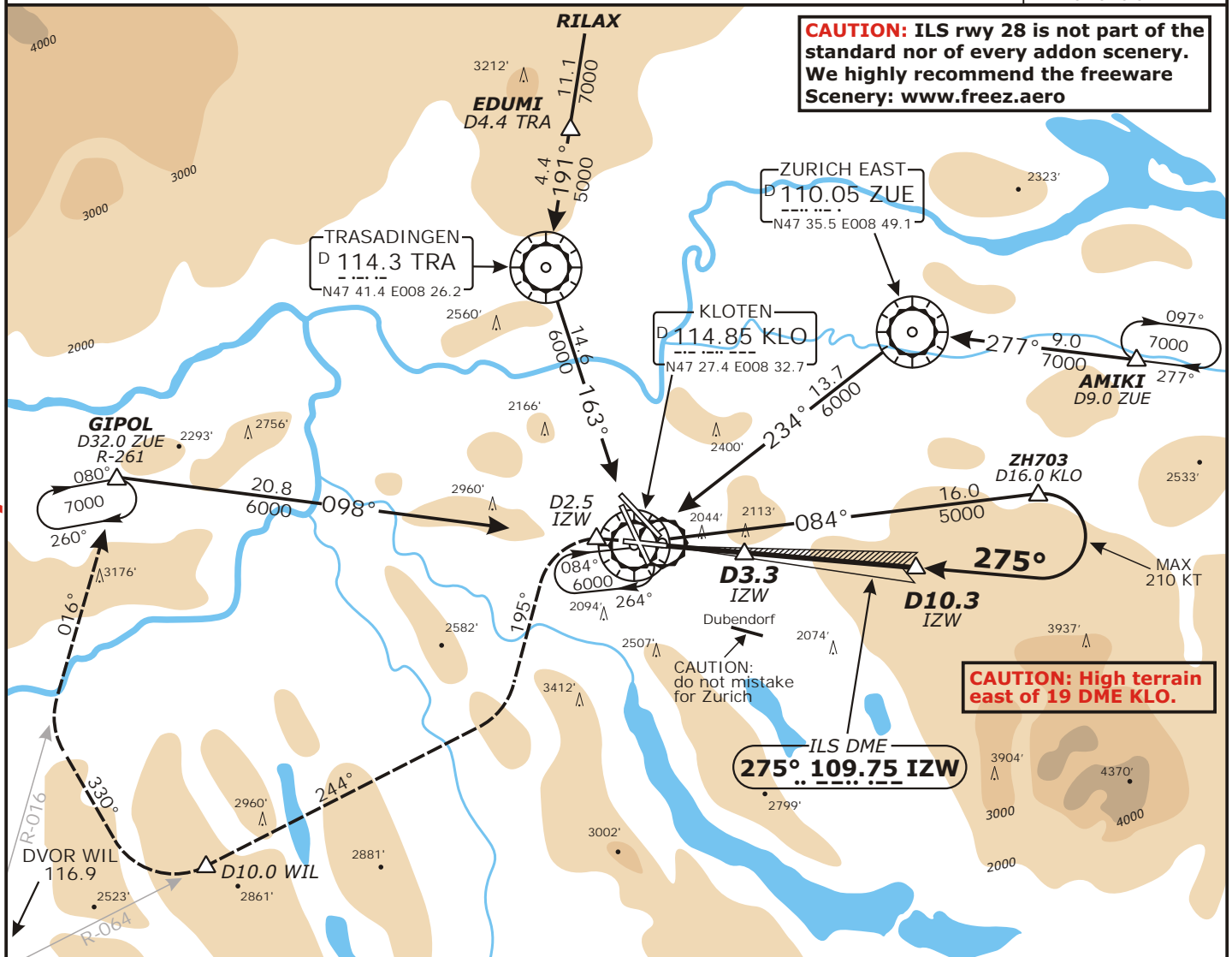
ZURICH, SWITZERLAND UNCATEGORIZED ILS DME Rwy 28

Valid for flight simulation use only - do not use for real life navigation

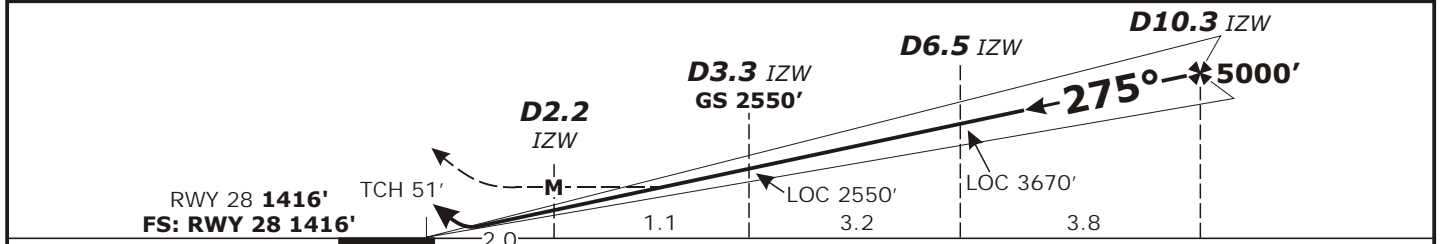
Swiss Radar LSAS_CTR 128.05	ZURICH Arrival LSZH_APP 120.75	ZURICH Final LSZH_F_APP 125.35	ZURICH Tower LSZH_TWR 118.10	ZURICH Apron LSZH_S_GND 121.75	ZURICH Apron LSZH_N_GND 121.85
LOC IZW 109.75	Final Apch Crs 275°	GS D3.3 IZW 2550' (1134')	ILS DH(H) Refer to Minimums	Apt Elev 1416' RWY 1416'	

MISSED APCH: Climb straight ahead. **Initial climb to 4000'**. At D2.5 IZW passed the station, turn **LEFT** (MAX IAS 210 KT) onto track 195°, **then continue climb to 7000'**. Intercept R-064 WIL inbound. At D10.0 WIL turn **RIGHT** onto 330°, intercept R-016 WIL. Proceed to GIPOL.

Alt Set: hPa Rwy Elev: 51 hPa Trans level: By ATC Trans alt: 7000'



LOC	IZW DME	3.0	4.0	5.0	6.0	7.0	8.0	9.0	10.0
(GS out)	ALTITUDE	2450'	2800'	3150'	3500'	3850'	4200'	4550'	4900'



Flight Simulator-OPS STRAIGHT-IN LANDING RWY 28		Gnd speed-Kts															
Missed apch climb gradient mim 2.5% DA(H): CAT A: 2831' (1415') CAT B: 2842' (1426') CAT C: 2853' (1437') CAT D: 2863' (1447')	ILS	Missed apch climb gradient mim 4.0% DA(H): CAT A: 2147' (731') CAT B: 2157' (741') CAT C: 2168' (752') CAT D: 2178' (762')	Descent Gradient 3.30° or LOC Descent Gradient 5.7%														
			<table border="1"> <tr> <td>70</td> <td>90</td> <td>100</td> <td>120</td> <td>140</td> <td>160</td> </tr> <tr> <td>417</td> <td>532</td> <td>591</td> <td>710</td> <td>828</td> <td>946</td> </tr> </table>						70	90	100	120	140	160	417	532	591
70	90	100	120	140	160												
417	532	591	710	828	946												
LOC (GS out) Missed apch climb gradient mim 4% MDA(H) 2360' (944') 2.5% MDA(H) 3070' (1654')			Visibility 4300m														
Visibility 4000m			Visibility 4300m														

CHANGES: New Procedure

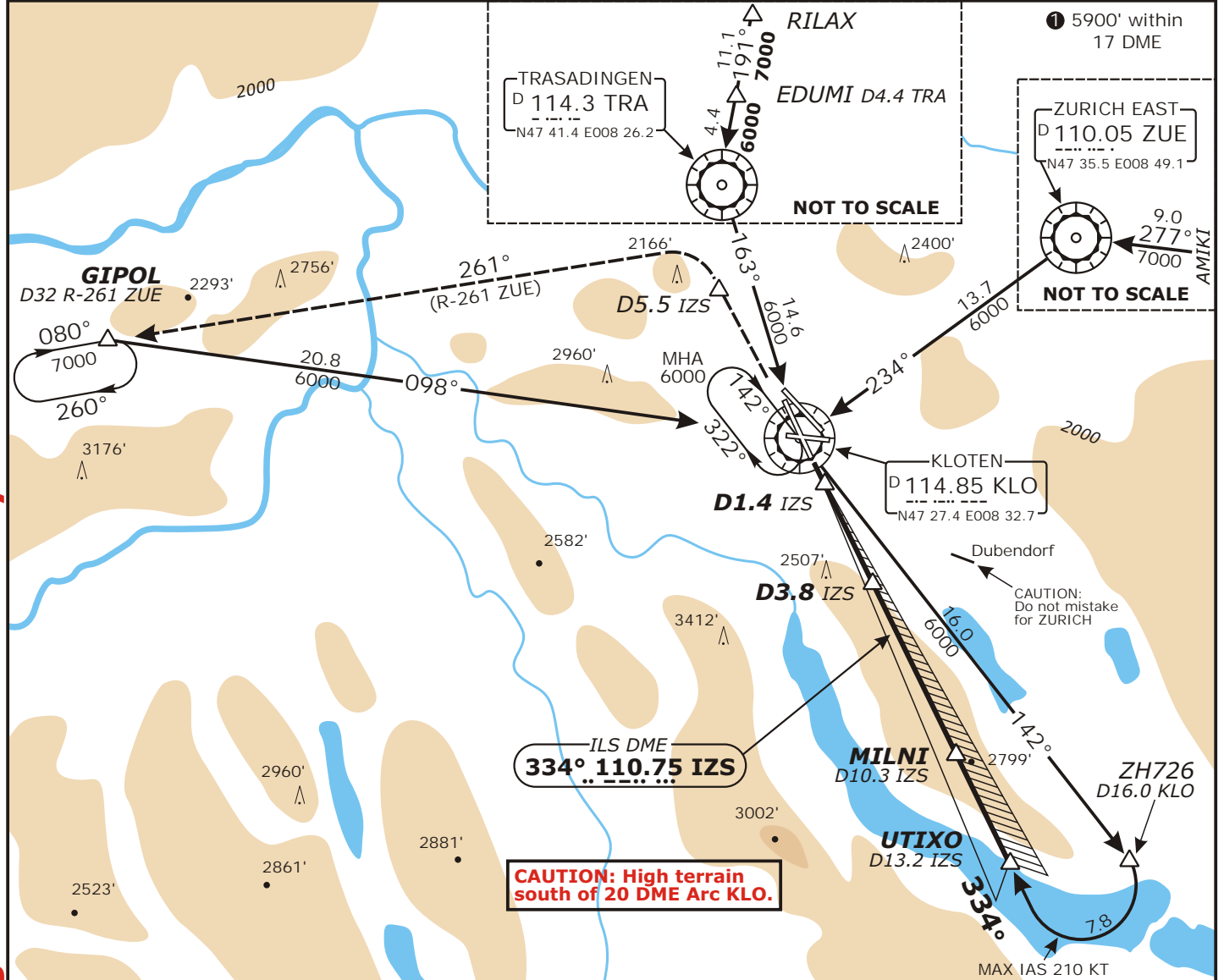
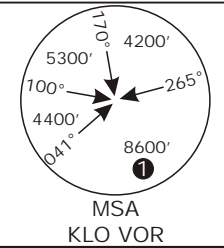
LSZH/ZRH ZURICH

APP CHART NO.4
Revision 08 JAN 07

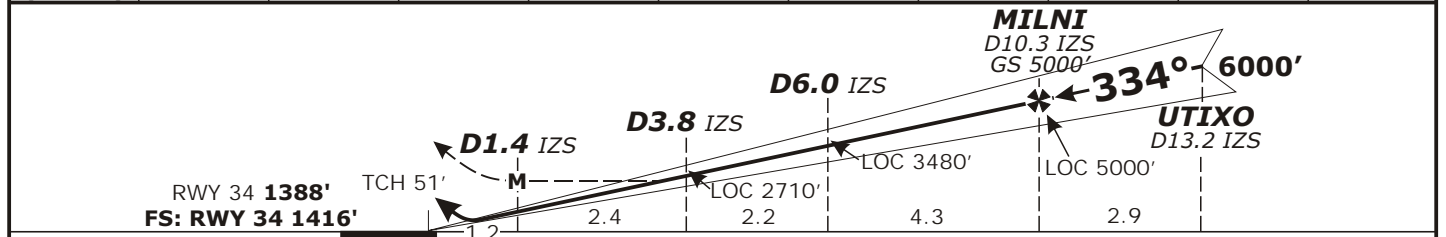
ZURICH, SWITZERLAND ILS DME Rwy 34

Valid for flight simulation use only - do not use for real life navigation

Swiss Radar LSAS_CTR 128.05	ZURICH Arrival LSZH_APP 120.75	ZURICH Final LSZH_APP 125.35	ZURICH Tower LSZH_TWR 118.10	ZURICH Ground LSZH_S_GND 121.75
LOC IZS 110.75	Final Apch Crs 334°	GS D3.8 2710' (1294')	ILS DA(H) Refer to Minimums	Apt Elev 1416' FS: RWY 1416 RWY 1388'
MISSED APCH: Climb straight ahead. Initial climb to 5000'. At D5.5 IZS passed the station turn LEFT. Continue climb to 7000'. Intercept R-261 ZUE. Proceed to GIPOL.				
Alt Set: hPa	Rwy Elev: 51 hPa	Trans level: By ATC	Trans alt: 7000'	



LOC	IZS DME	2.0	3.0	4.0	5.0	7.0	8.0	9.0	11.0	13.0
(GS out)	ALTITUDE	2080'	2430'	2780'	3130'	3880'	4180'	4530'	5230'	5930'



Flight Simulator-OPS Missed apch climb gradient mim 3.0% to 2400' DA(H) 1616' (200')	STRAIGHT-IN LANDING RWY 34 ILS Missed apch climb gradient mim 2.5% DA(H): CAT A: 1820' (204') CAT B: 1630' (214') CAT C: 1643' (204') CAT D: 1653' (237')	Gnd speed-Kts 70 90 100 120 140 160 Descent Gradient 3.30° or LOC Descent Gradient 5.7% 436 561 623 748 872 997
	RVR 550m	RVR 600m

CHANGES: Communications

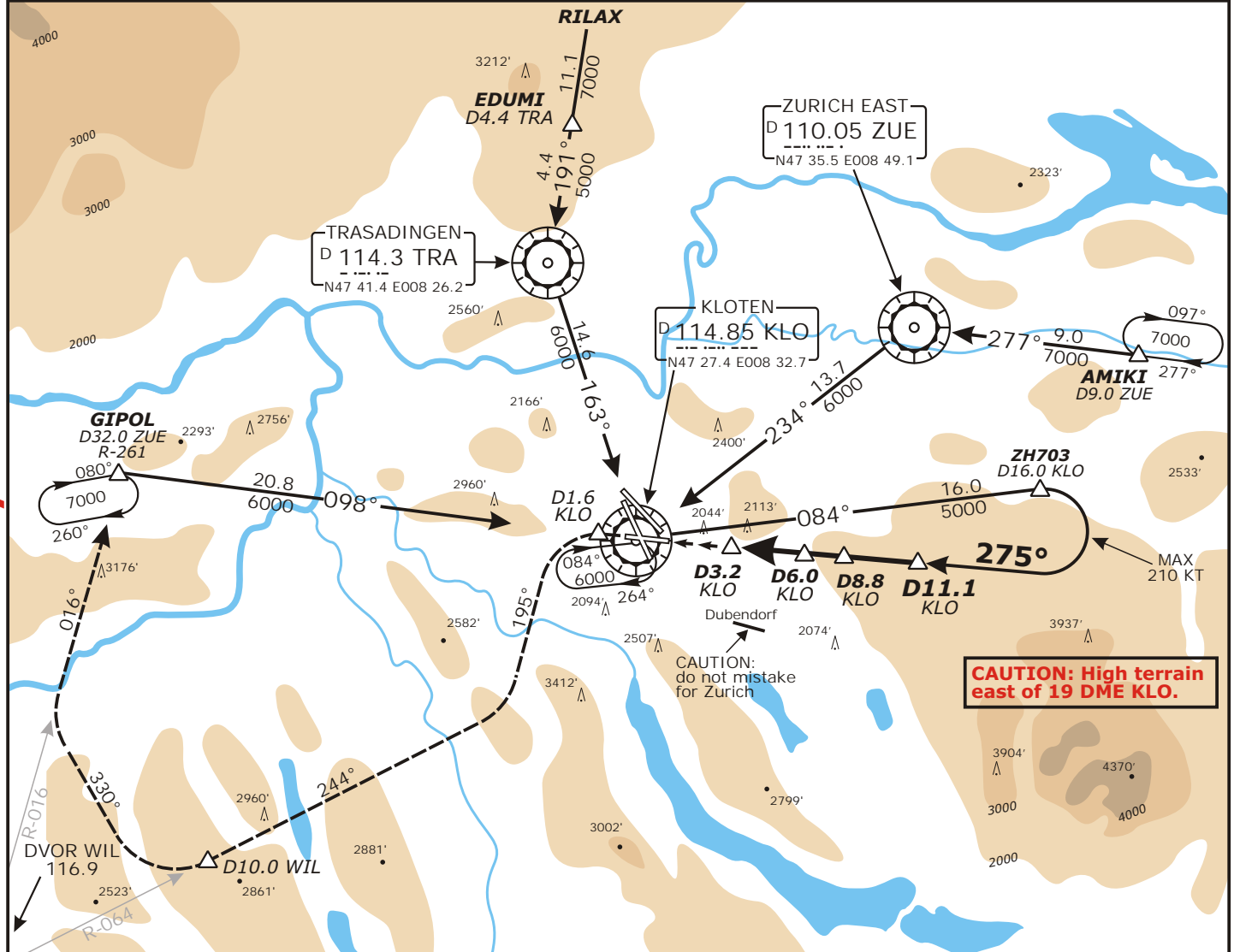
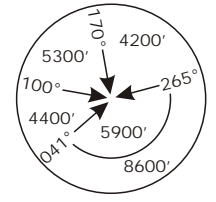
LSZH/ZRH ZURICH

APP CHART NO.5
Revision 20 FEB 07

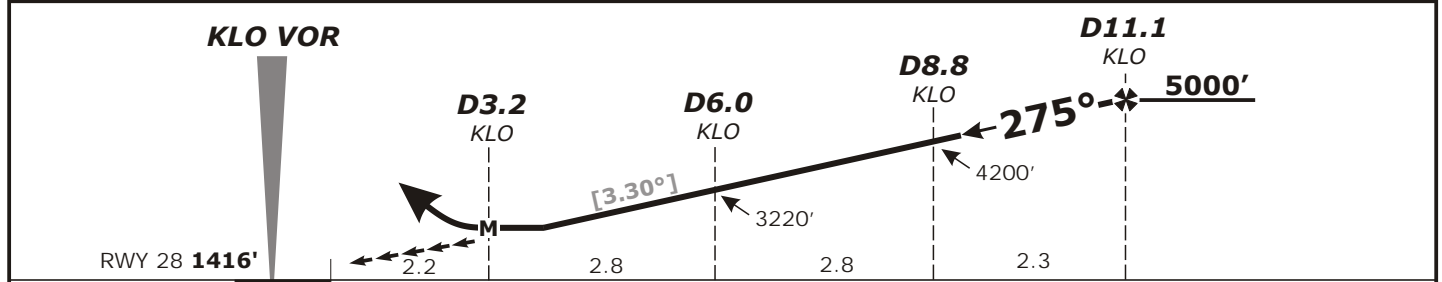
ZURICH, SWITZERLAND VOR DME Rwy 28

Valid for flight simulation use only - do not use for real life navigation

Swiss Radar LSAS_CTR 128.05	ZURICH Arrival LSZH_APP 120.75	ZURICH Final LSZH_F_APP 125.35	ZURICH Tower LSZH_TWR 118.10	ZURICH Apron LSZH_S_GND 121.75	ZURICH Apron LSZH_N_GND 121.85
<p>MISSED APPROACH: Climb on R-095° KLO to 4000'. At D1.6 KLO past the station, turn LEFT (MAX IAS 210 KT) onto track 195°, then continue climb to 7000'. Intercept R-064 WIL inbound. At D10.0 WIL turn RIGHT onto 330°, intercept R-016 WIL. Proceed to GIPOL.</p>					
<p>Alt Set: hPa Rwy Elev: 51 hPa Trans level: By ATC Trans alt: 7000' Expect turbulences on short final during south-westerly winds. DME reads D1.0 KLO at threshold</p>					



KLO	4.0	5.0	6.0	7.0	8.0	9.0	10.0	11.0
ALTITUDE	2520'	2870'	3220'	3570'	3920'	4270'	4620'	4970'



Flight Simulator-OPS		Gnd speed-Kts					
STRAIGHT-IN LANDING RWY 28 MDA(H) 2360' (944')		Descent Gradient 5.77% or [3.30°]					
		MAP at D3.2 KLO					
A	4300m	70	90	100	120	140	160
B		409	526	584	701	818	935
C							
D							

CHANGES: New Procedure

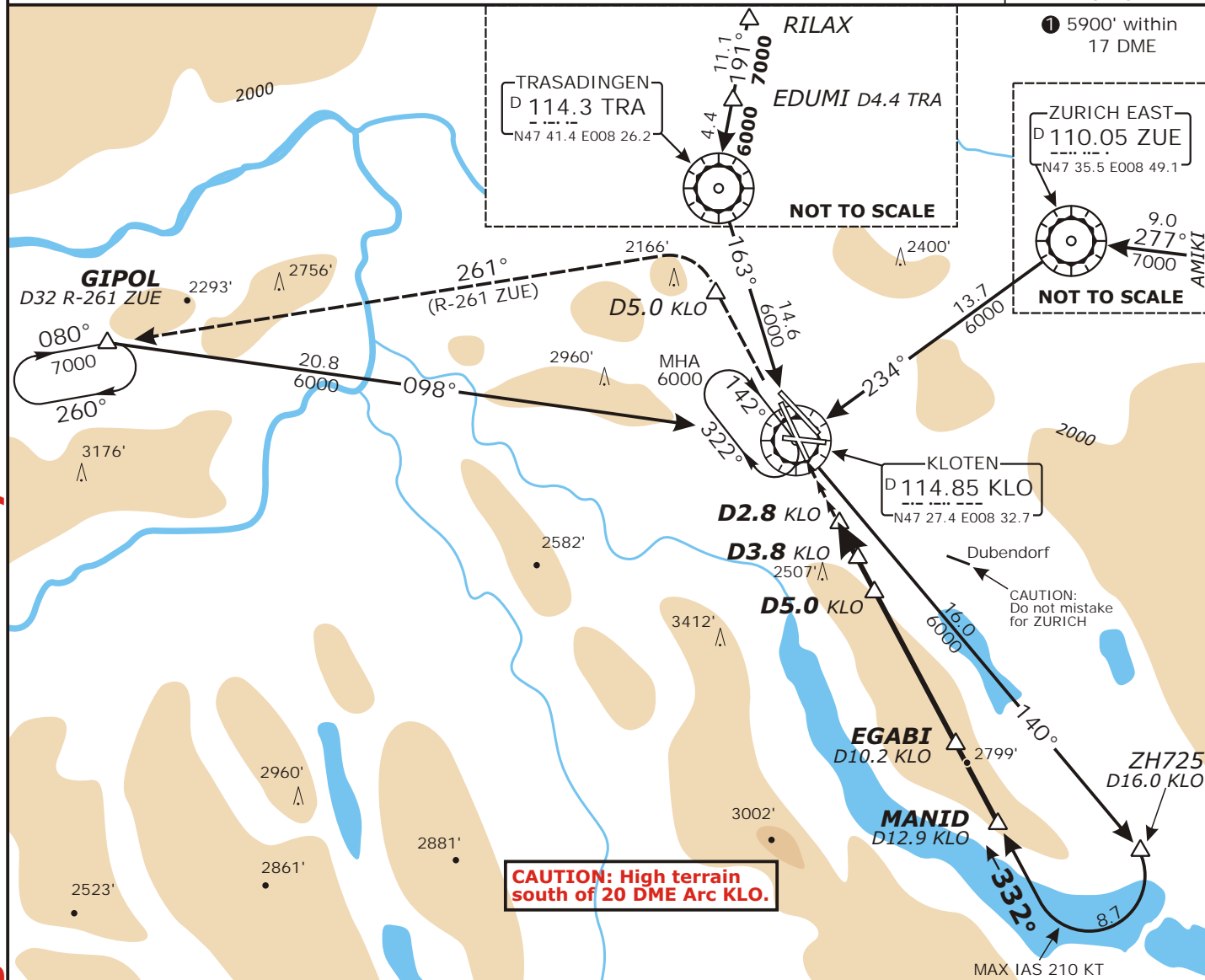
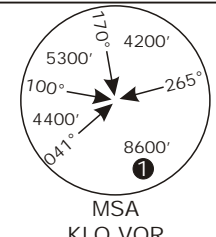
LSZH/ZRH ZURICH

APP CHART NO.6
Revision 08 JAN 07

ZURICH, SWITZERLAND (GPS) VOR DME Rwy 34

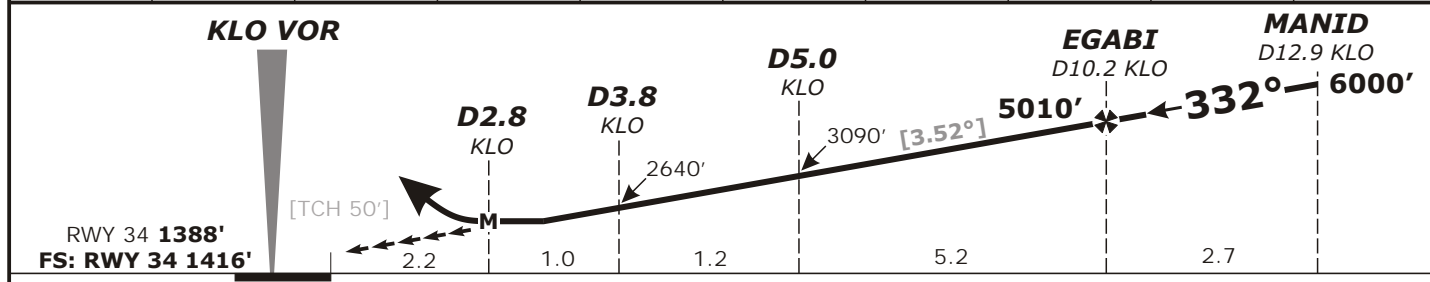
Valid for flight simulation use only - do not use for real life navigation

Swiss Radar LSAS_CTR 128.05	ZURICH Arrival LSZH_APP 120.75	ZURICH Final LSZH_F_APP 125.35	ZURICH Tower LSZH_TWR 118.10	ZURICH Ground LSZH_GND 121.90
VOR KLO 114.85	Final Apch Crs 332°	Minimum Alt EGABI 5010' (3584')	MDA(H) 2430' (1014')	Apt Elev 1416' FS: RWY 1416 RWY 1388'
MISSED APCH: Climb on R-152 inbound KLO VOR. Initial climb to 5000'. Continue on R-332 KLO. At D5.0 passed the station turn LEFT. Continue climb to 7000'. Intercept R-261 ZUE. Proceed to GIPOL.				
Alt Set: hPa		Rwy Elev: 51 hPa	Trans level: By ATC	
				Trans alt: 7000'



CAUTION: High terrain south of 20 DME Arc KLO.

KLO DME	4.0	5.0	6.0	7.0	8.0	9.0	10.0	11.0	12.0
ALTITUDE	2720'	3090'	3460'	3830'	4190'	4560'	4930'	5300'	5670'



Flight Simulator-OPS STRAIGHT-IN LANDING RWY 34 MDA(H) 2430' (1014') 4500m	Gnd speed-Kts	70	90	100	120	140	160
	Descent Gradient 6.15% or Descent angle [3.52°]	436	561	623	748	872	997
	MAP at D2.8 KLO						

CHANGES: Communications.