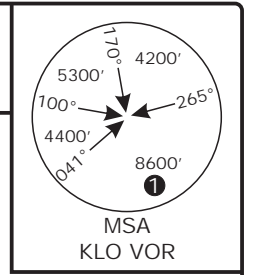


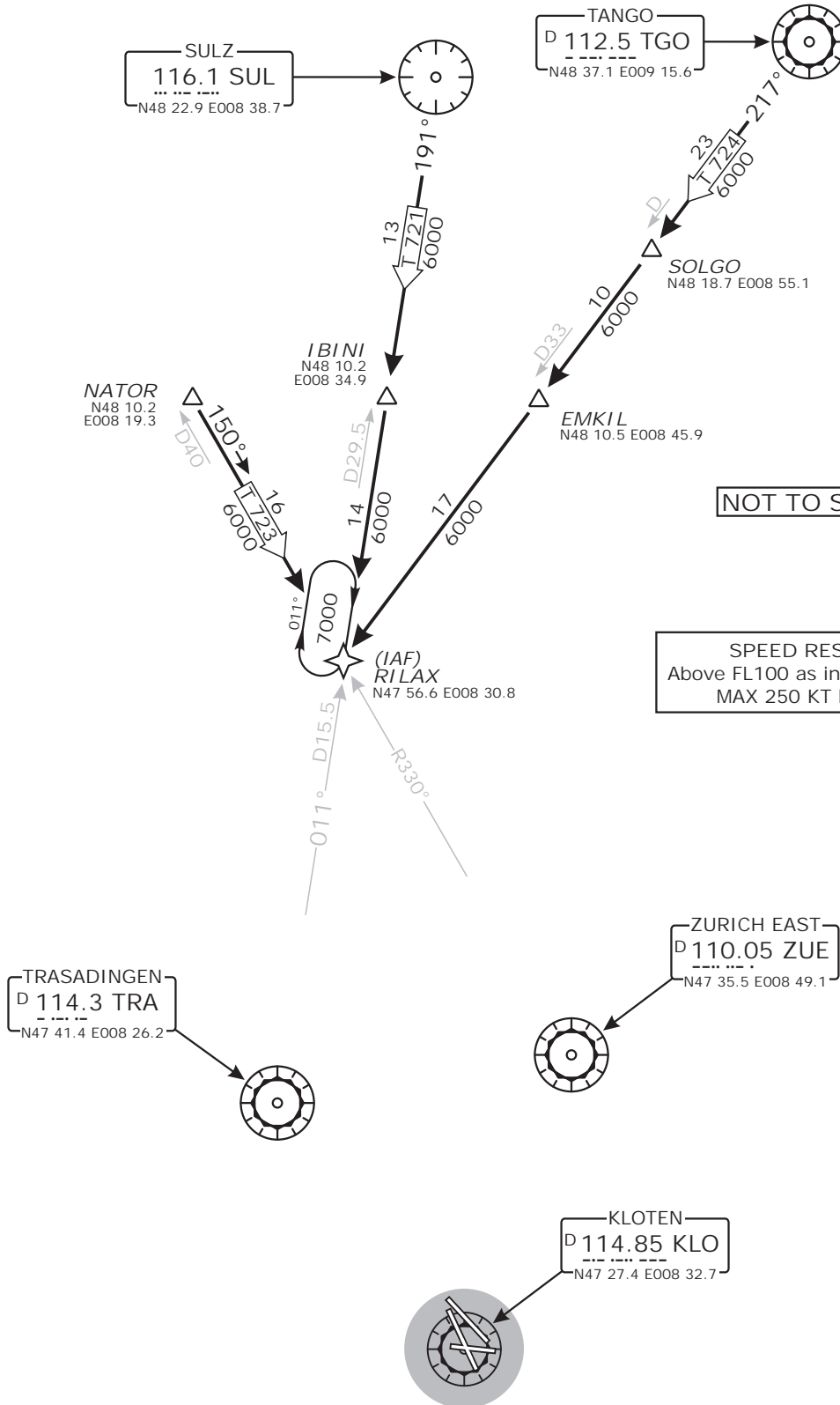
Valid for flight simulation use only - do not use for real life navigation

Swiss Radar LSAS_CTR 128.05	ZURICH Arrival LSZH_APP 131.15	LSZH_W_APP 118.0	ZURICH Final LSZH_F_APP 125.35	Apt Elev 1416'	Alt Set: hPa (IN on request) Trans level: by ATC Trans alt: 7000'
-----------------------------------	--------------------------------------	---------------------	--------------------------------------	-------------------	---



RNAV TRANSITIONS

TO RILAX HOLDING
FOR CONTINUATION AFTER RILAX REFER TO CHART NO.3

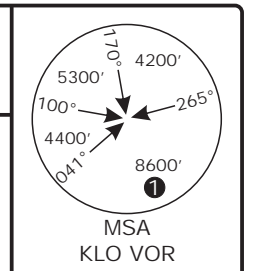


NOT TO SCALE

SPEED RESTRICTION
Above FL100 as instructed by Radar.
MAX 250 KT below FL100.

Valid for flight simulation use only - do not use for real life navigation

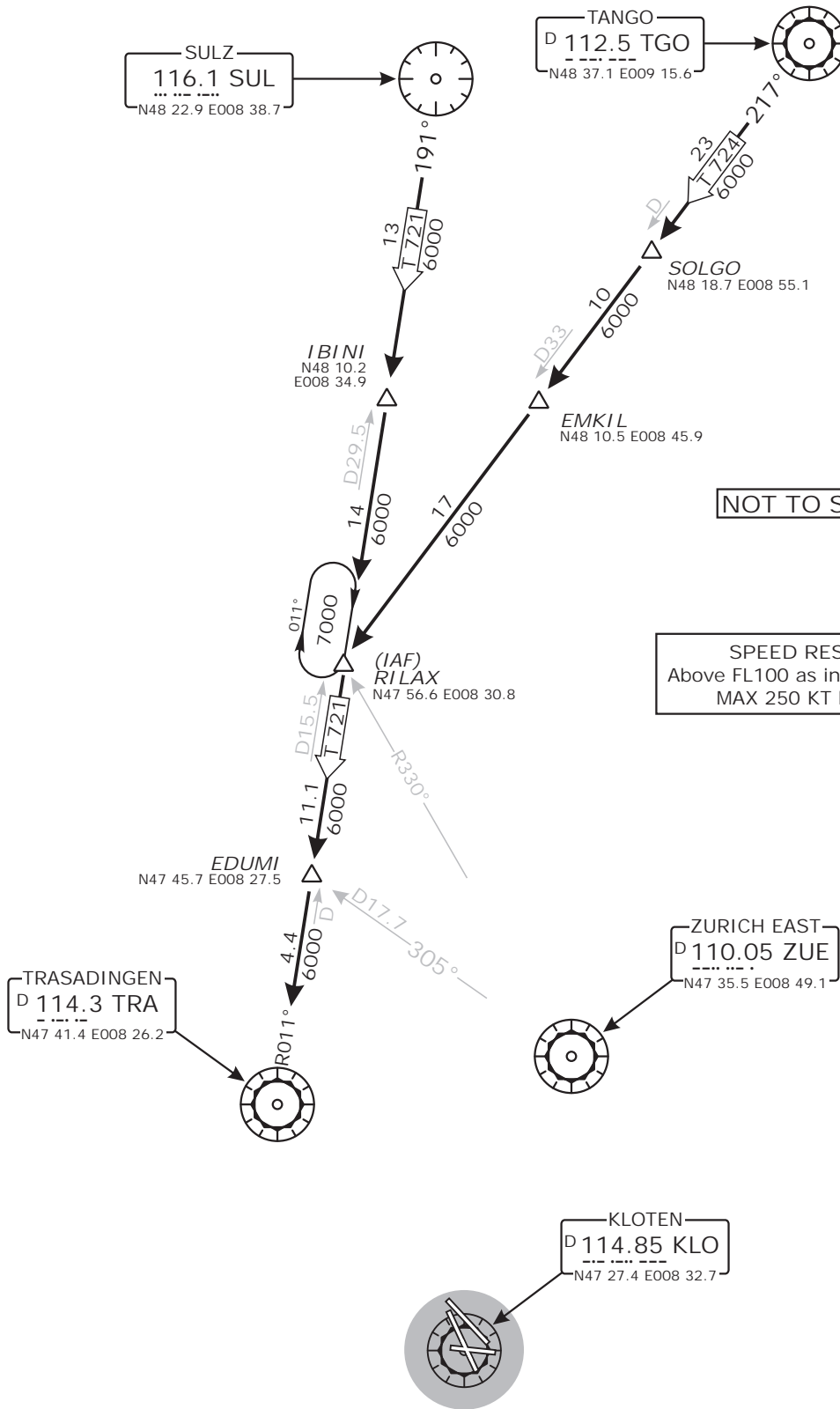
Swiss Radar LSAS_CTR 128.05	ZURICH Arrival LSZH_APP 131.15	LSZH_W_APP 118.0	ZURICH Final LSZH_F_APP 125.35	Apt Elev 1416'	Alt Set: hPa (IN on request) Trans level: by ATC Trans alt: 7000'
-----------------------------------	--------------------------------------	---------------------	--------------------------------------	-------------------	---



NON-RNAV TRANSITIONS

TO TRA

FOR CONTINUATION AFTER TRA REFER TO CHART NO.3



CHANGES: App frequency.

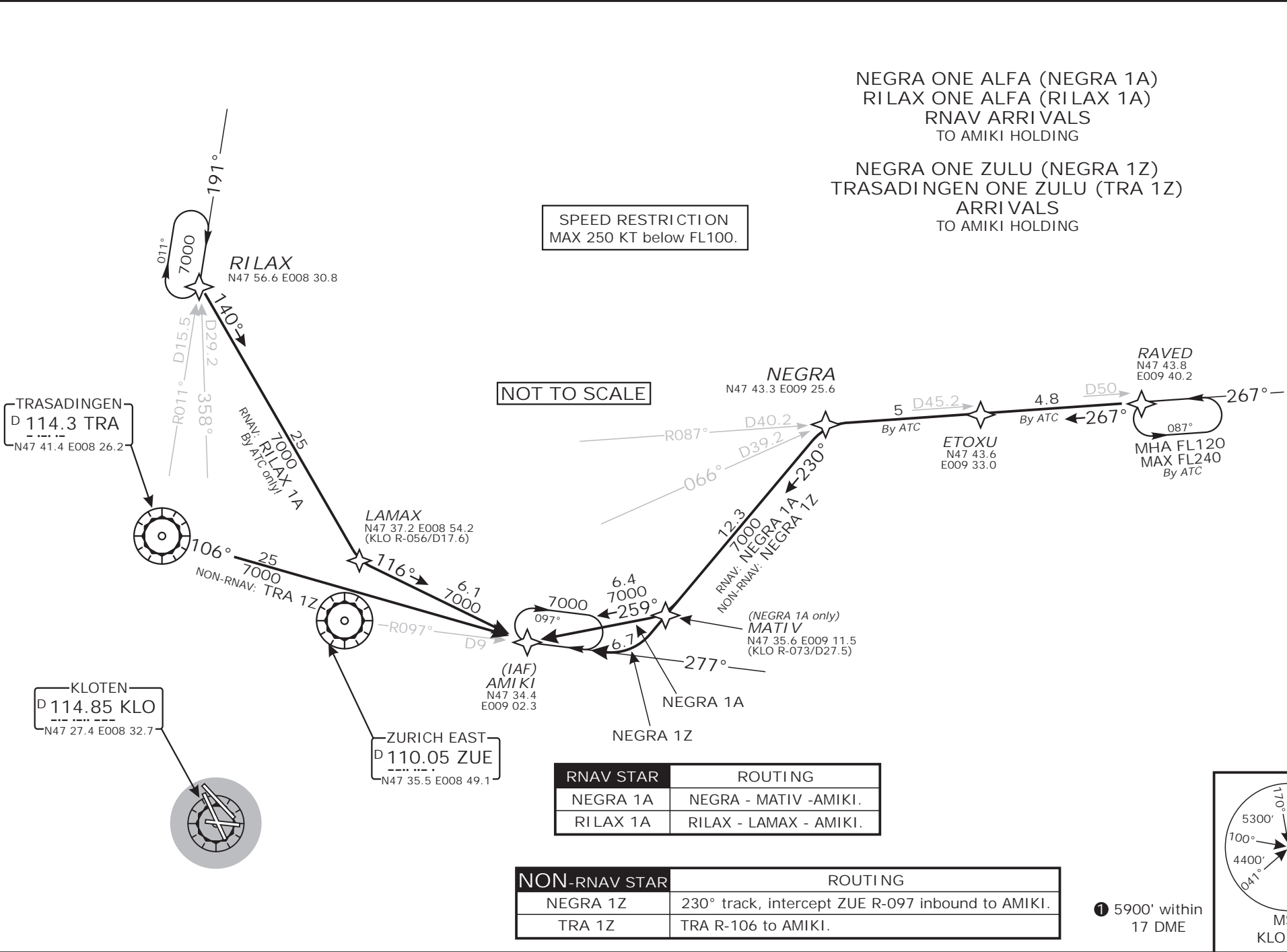
Valid for flight simulation use only - do not use for real life navigation

CHANGES: App frequency.

© VAACC Switzerland

http://www.vaacc.ch/

charts@vaacc.ch



NEGRA ONE ALFA (NEGRA 1A)
 RILAX ONE ALFA (RILAX 1A)
 RNAV ARRIVALS
 TO AMIKI HOLDING

NEGRA ONE ZULU (NEGRA 1Z)
 TRASADINGEN ONE ZULU (TRA 1Z)
 ARRIVALS
 TO AMIKI HOLDING

SPEED RESTRICTION
 MAX 250 KT below FL100.

NOT TO SCALE

RNAV STAR	ROUTING
NEGRA 1A	NEGRA - MATIV - AMIKI.
RILAX 1A	RILAX - LAMAX - AMIKI.

NON-RNAV STAR	ROUTING
NEGRA 1Z	230° track, intercept ZUE R-097 inbound to AMIKI.
TRA 1Z	TRA R-106 to AMIKI.

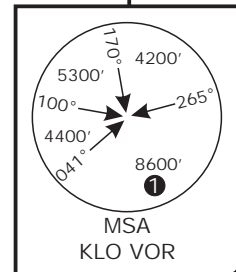
Swiss Radar LSAS_CTR 128.05	ZURICH Arrival LSZH_APP 131.15	ZURICH Final LSZH_F_APP 125.35	Apt Elev 1416'	Alt Set: hpa (IN on request) Trans level: by ATC Trans alt: 7000'
ZURICH 118.0				

LSZH/ZRH ZURICH

STAR CHART NO. 3
 Revision 25 AUG 11

ZURICH, SWITZERLAND

RNAV and NON-RNAV STAR



Valid for flight simulation use only - do not use for real life navigation

CHANGES: App frequency.

© VAAC Switzerland

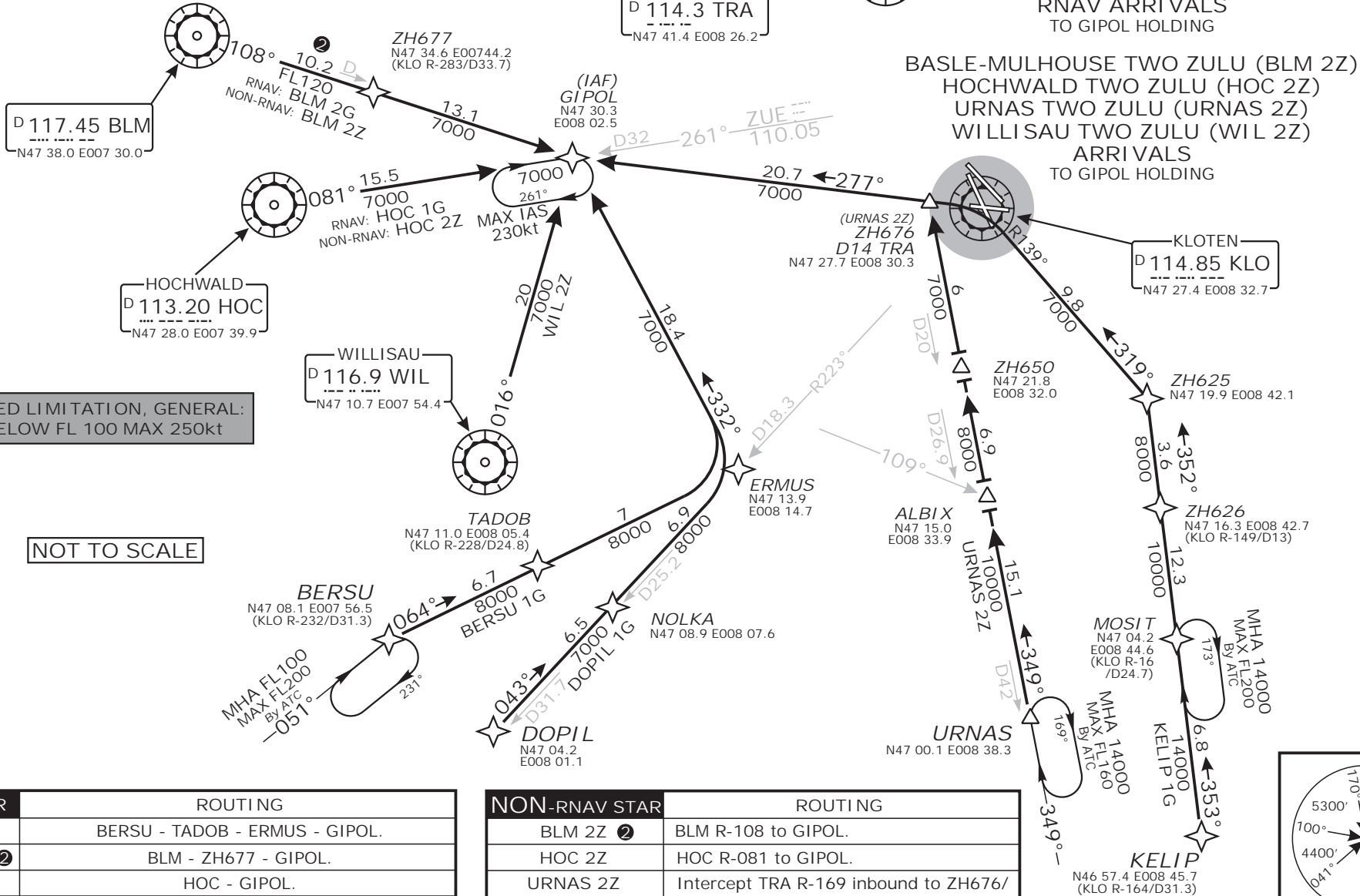
http://www.vaac.ch/

charts@vaac.ch

② For the purpose of descent planning expect to cross 9NM to BLM at or above FL200, BLM between FL200 and FL150, ZH677 at or above FL120.

SPEED LIMITATION, GENERAL:
BELOW FL 100 MAX 250kt

NOT TO SCALE

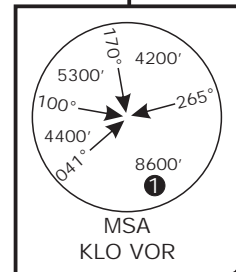


BASLE-MULHOUSE TWO ZULU (BLM 2Z)
 HOCHWALD TWO ZULU (HOC 2Z)
 URNAS TWO ZULU (URNAS 2Z)
 WILLISAU TWO ZULU (WIL 2Z)
 ARRIVALS
 TO GIPOL HOLDING

Swiss Radar LSMS_CTR 128.05	ZURICH Arrival LSZH_APP 131.15	ZURICH Final LSZH_F_APP 125.35	Apt Elev 1416'	Alt Set: hPa (IN on request) Trans level: by ATC Trans alt: 7000'
-----------------------------------	--------------------------------------	--------------------------------------	-------------------	---

RNAV STAR	ROUTING
BERSU 1G	BERSU - TADOB - ERMUS - GIPOL.
BLM 2G ②	BLM - ZH677 - GIPOL.
HOC 1G	HOC - GIPOL.
DOPIL 1G	DOPIL - NOLKA - ERMUS - GIPOL.
KELIP 1G	KELIP - MOSIT - ZH626 - ZH625 - KLO - GIPOL.

NON-RNAV STAR	ROUTING
BLM 2Z ②	BLM R-108 to GIPOL.
HOC 2Z	HOC R-081 to GIPOL.
URNAS 2Z	Intercept TRA R-169 inbound to ZH676/ D14 TRA, intercept KLO R-278 to GIPOL.
WIL 2Z	WIL R-016 to GIPOL.



① 5900' within 17 DME

LSZH/ZRH ZURICH
 STAR CHART NO. 4
 Revision 25 AUG 11
 RNAV and NON-RNAV STAR
 ZURICH, SWITZERLAND