

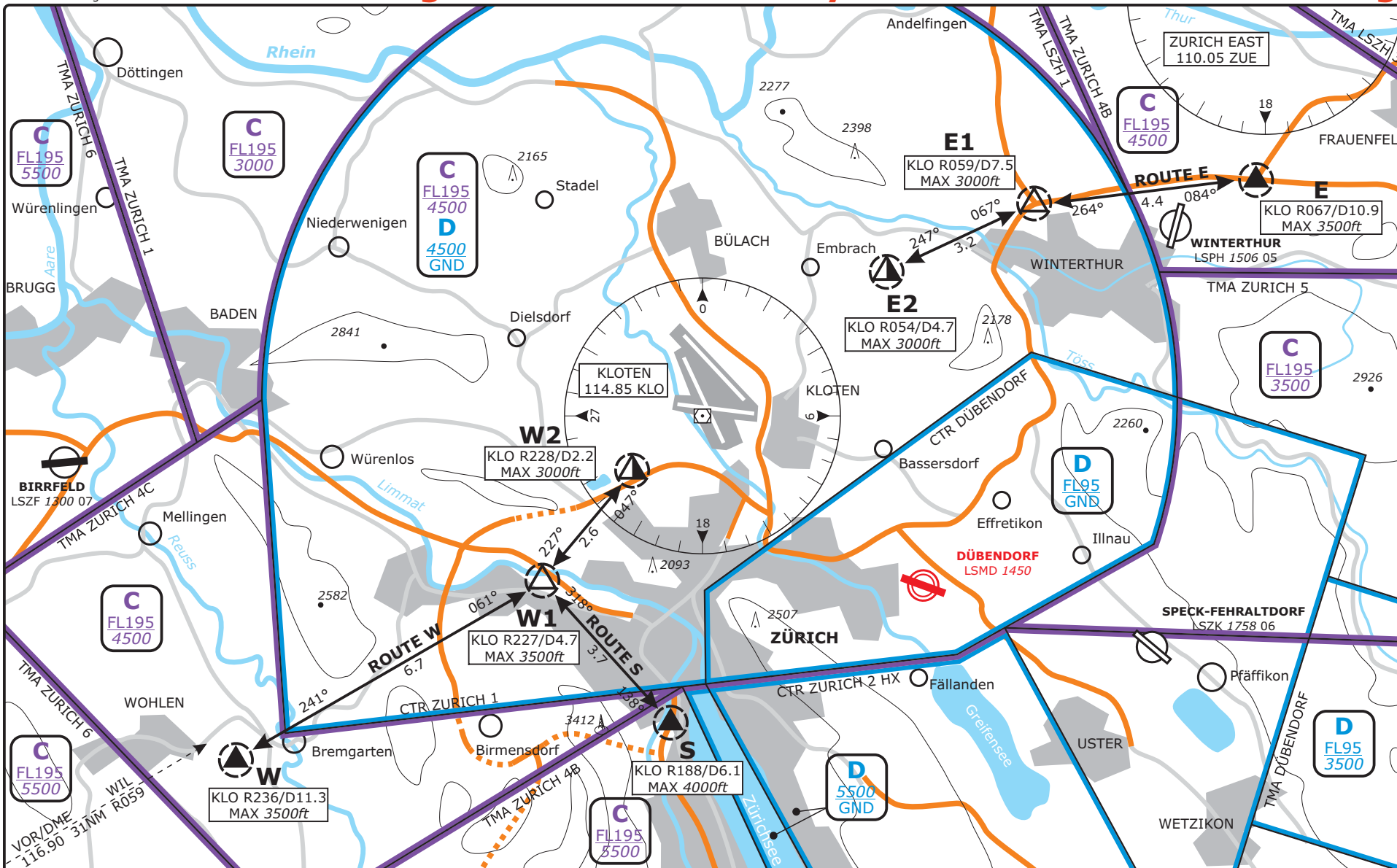
CHANGES: CTR 2 LSZH, AD RWY length

Valid for flight simulation use only - do not use for real life navigation

© VACC Switzerland

http://www.vacc.ch/

charts@vacc.ch



Die für die Meldepunkte massgeblichen maximalen Flughöhen sind auf den VFR-Routen einzuhalten, sofern der Wolkenabstand dies zulässt.
The maximum altitudes at the reporting points are to be maintained on the VFR routes, if distance from clouds permits

Obligatorisch nur für Anflug
Compulsory for ARR only

W:	47° 20' 45" N / 008° 19' 16" E
W1:	47° 24' 06" N / 008° 27' 46" E
W2:	47° 25' 55" N / 008° 30' 26" E
S:	47° 21' 22" N / 008° 31' 24" E
E:	47° 31' 55" N / 008° 47' 24" E
E1:	47° 31' 27" N / 008° 42' 06" E
E2:	47° 30' 15" N / 008° 38' 12" E

DISTANCES IN NM
ALTITUDES IN FT

LSZH/ZRH	ZÜRICH, SWITZERLAND	VAC CHART NO.1	VFR AREA
SWISS Information LSAS_I_CTR 124.70	ZÜRICH Tower LSZH_TWR 118.10	ZÜRICH Apron LSZH_S_GND 121.75	DÜBENDORF Tower LSMD_TWR 118.97
	ZÜRICH ATIS LSZH_ATIS 125.72		Apt Elev 1417
			VAC
			Revision 31 MAR 16

CHANGES: Airspace structure,
Routings, Rep points

Valid for flight simulation use only - do not use for real life navigation

© VACC Switzerland

Normal-Verfahren
Normal procedures



Alternativ-Verfahren
Alternate procedures



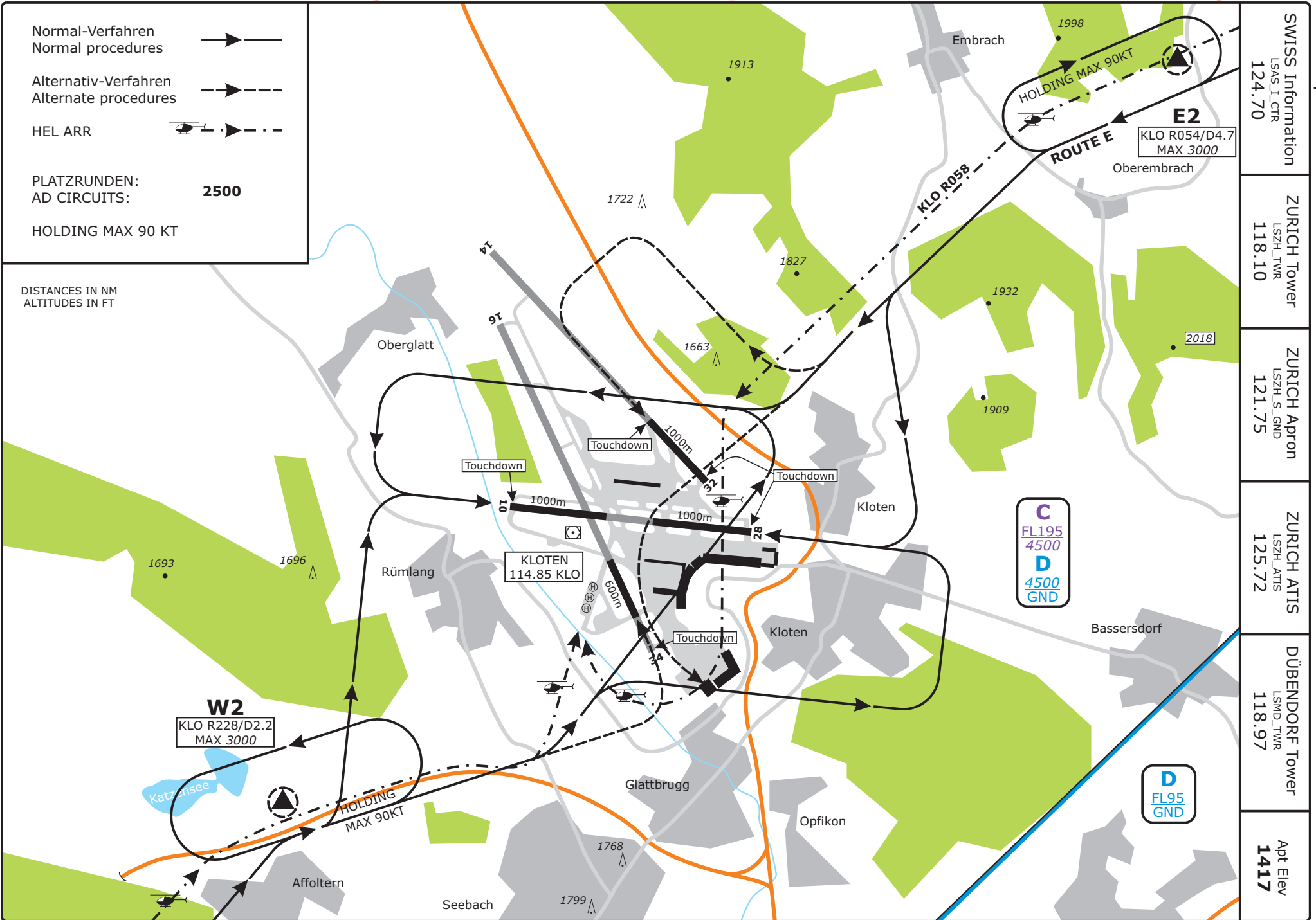
HEL ARR



PLATZRUNDEN:
AD CIRCUITS: **2500**

HOLDING MAX 90 KT

DISTANCES IN NM
ALTITUDES IN FT



<http://www.vacc.ch/>

charts@vacc.ch

LSZH/ZRH
ZURICH, SWITZERLAND

VAC CHART NO.2
Revision 11 DEZ 14

VAC
ARRIVAL

SWISS Information LSAS, I_CTR 124.70	ZURICH Tower LSZH_TWR 118.10	ZURICH Apron LSZH_S_GND 121.75	ZURICH ATIS LSZH_ATIS 125.72	DÜBENDORF Tower LSMD_TWR 118.97	Apt Elev 1417
--	------------------------------------	--------------------------------------	------------------------------------	---------------------------------------	-------------------------

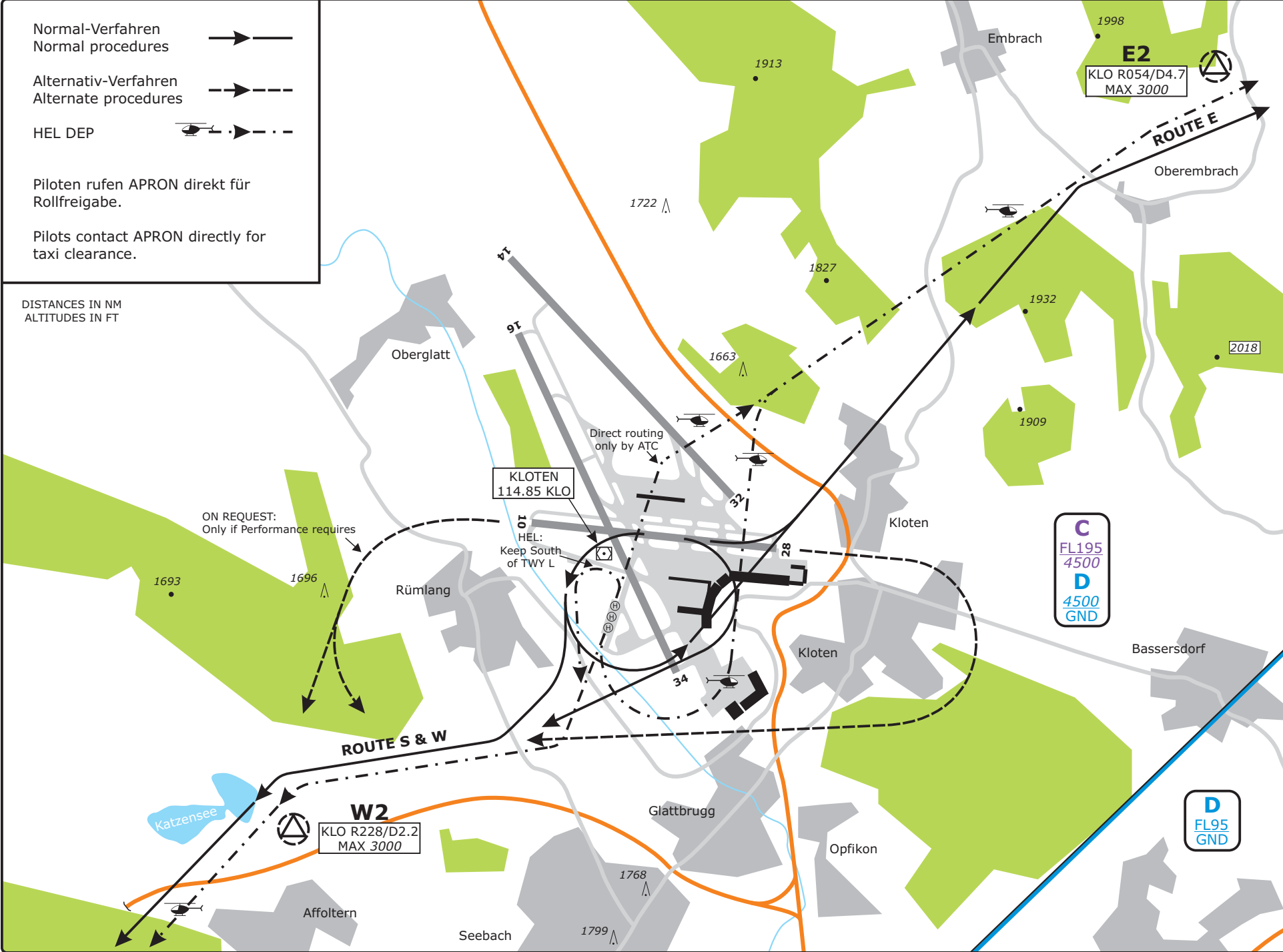
CHANGES: Airspace structure,
Routings, Rep points

Valid for flight simulation use only - do not use for real life navigation

© VACC Switzerland

<http://www.vacc.ch/>

charts@vacc.ch



LSZH/ZRH
ZÜRICH, SWITZERLAND

VAC CHART NO.3
Revision 11 DEZ 14

VAG
DEPARTURE

SWISS Information LSAS_I_CTR 124.70	ZÜRICH Tower LSZH_TWR 118.10	ZÜRICH Apron LSZH_S_GND 121.75	ZÜRICH ATIS LSZH_ATIS 125.72	DÜBENDORF Tower LSMD_TWR 118.97	Apt Elev 1417
---	------------------------------------	--------------------------------------	------------------------------------	---------------------------------------	-------------------------