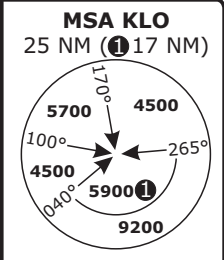


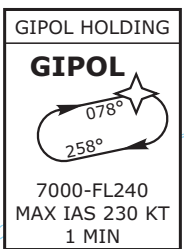
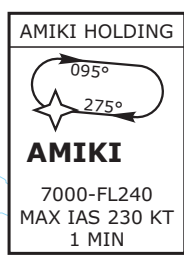
SWISS Radar LSAS_CTR 128.05	ZURICH Arrival LSZH_APP 135.22	ZURICH Final LSZH_F_APP 118.00	ZURICH ATIS LSZH_ATIS 125.72	Alt Set: hPa (IN on request) Trans level: by ATC Trans alt: 7000
-----------------------------------	--------------------------------------	--------------------------------------	------------------------------------	--



AMIKI, GIPOL, RILAX
RNAV 1 TRANSITIONS
RWY 34

CAUTION: ILS RWY 34 is not part of every default scenery.
Visit charts.vacc.ch/LSZH#sceneries

SPEED RESTRICTION
MAX IAS 250 KT below FL100



If unable to follow transition advise ATC immediately: "unable RNAV transition"!

CLEARANCE PHRASEOLOGY:
1) "CLEARED XXX TRANSITION":
 Authorization to fly the lateral RNAV 1-Route.
Level assignments will be issued by ATC.
2) "CLEARED DIRECT WAYPOINT XXX":
 Authorization to fly from the present position direct to a waypoint and to join thereafter the appropriate RNAV 1-Route.
Level assignments will be issued by ATC.

CAUTION: High terrain east of D19 KLO.

DISTANCES IN NM
ALTITUDES IN FT

Valid for flight simulation use only - do not use for real life navigation

CHANGES: CTR 2 LSZH