

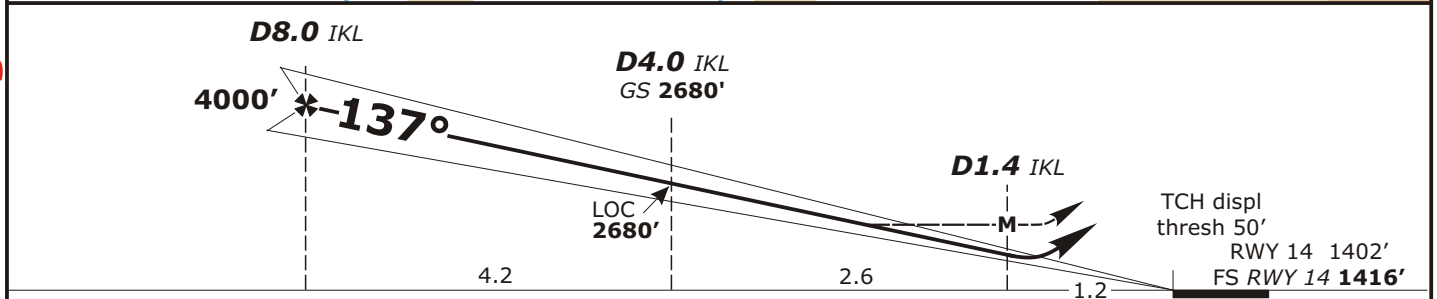
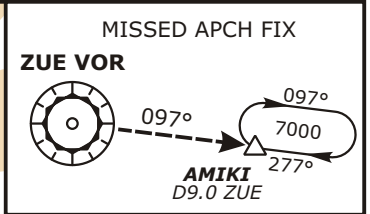
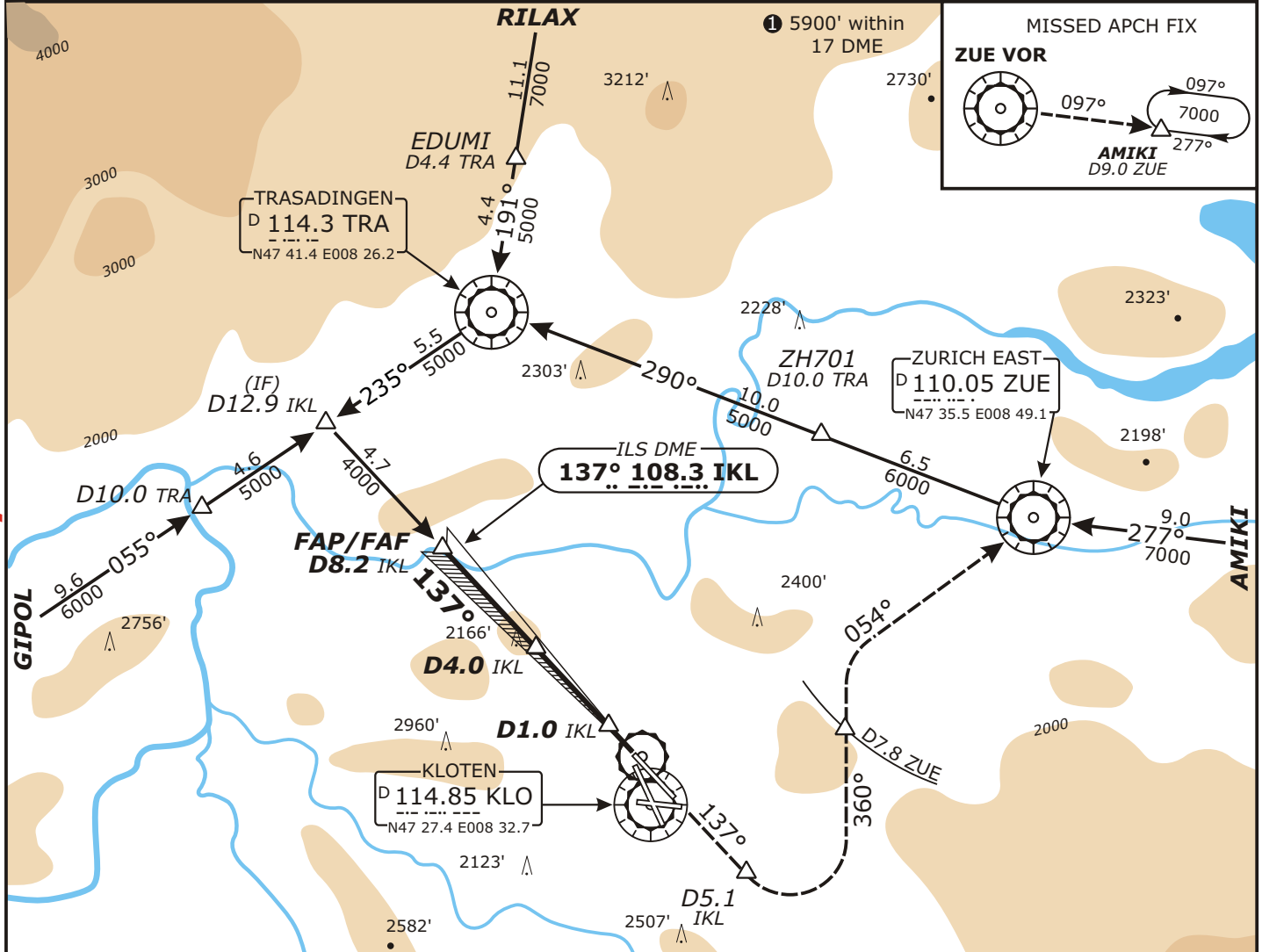
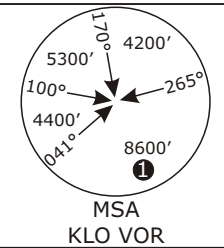
LSZH/ZRH ZURICH

APP CHART NO.1
Revision 09 APR 09

ZURICH, SWITZERLAND ILS DME Rwy 14 CAT II/III

Valid for flight simulation use only - do not use for real life navigation

Swiss Radar LSAS_CTR 128.05	ZURICH Arrival LSZH_APP 120.75	ZURICH Final LSZH_F_APP 125.35	ZURICH Tower LSZH_TWR 118.10	ZURICH Ground LSZH_S_GND 121.75
LOC IKL 108.3	Final Apch Crs 137°	GS D4.0 IKL 2730' (1314')	CAT I : RA 187' DH 1616' (200') CAT II: RA 87' DH 1516' (100')	Apt Elev 1416' FS: RWY 1416 RWY 1402'
<p>MISSED APCH: Climb on track 137°. Initial climb to 4000'. At D5.1 IKL passed the station, turn LEFT (MAX IAS 210 KT) onto track 360° to intercept R-234 ZUE. At D7.8 ZUE continue climb to 7000'. Cross ZUE VOR at 6000' or above and intercept R-097 ZUE to AMIKI.</p>				
Alt Set: hPa		Rwy Elev: 51 hPa	Trans level: By ATC	Trans alt: 7000'



Flight Simulator-OPS					STRAIGHT-IN LANDING RWY 14		CIRCLE-TO-LAND TO RWYS 10 & 28		Gnd speed-Kts											
					MINIMUMS				70		90		100		120		140		160	
					A		B		377		485		539		647		755		862	
					RA		195'		MAP at D1.0 IKL (LOC out)											
					DH(A)		1616' (200')		LOC (GS out) with IKL DME: MDA(H) 1870' (454') RVR 1700m.											
					RVR		550m		It is pilot's responsibility to accept "swing over" procedure to rwy 16, when proposed by ATC.											
					CAT A		110		RWY 14 is approved for CAT II/III operations, special aircrew and ACFT certification required.											
					CAT B		135													
					CAT C		180													
					CAT D		180													

CHANGES: Procedure.