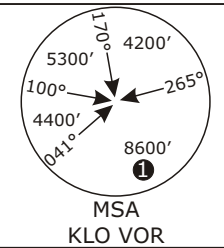


LSZH/ZRH ZURICH

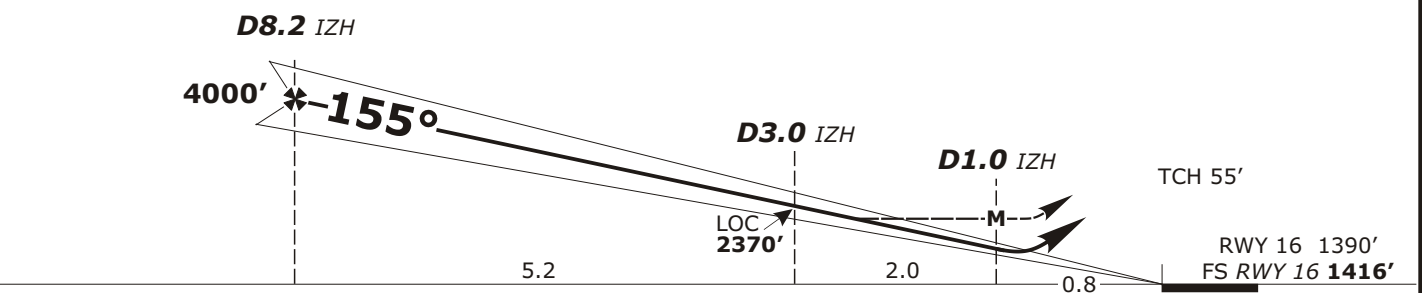
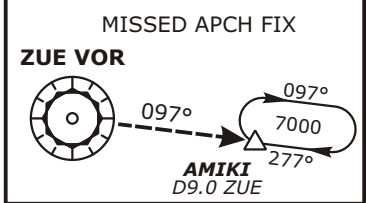
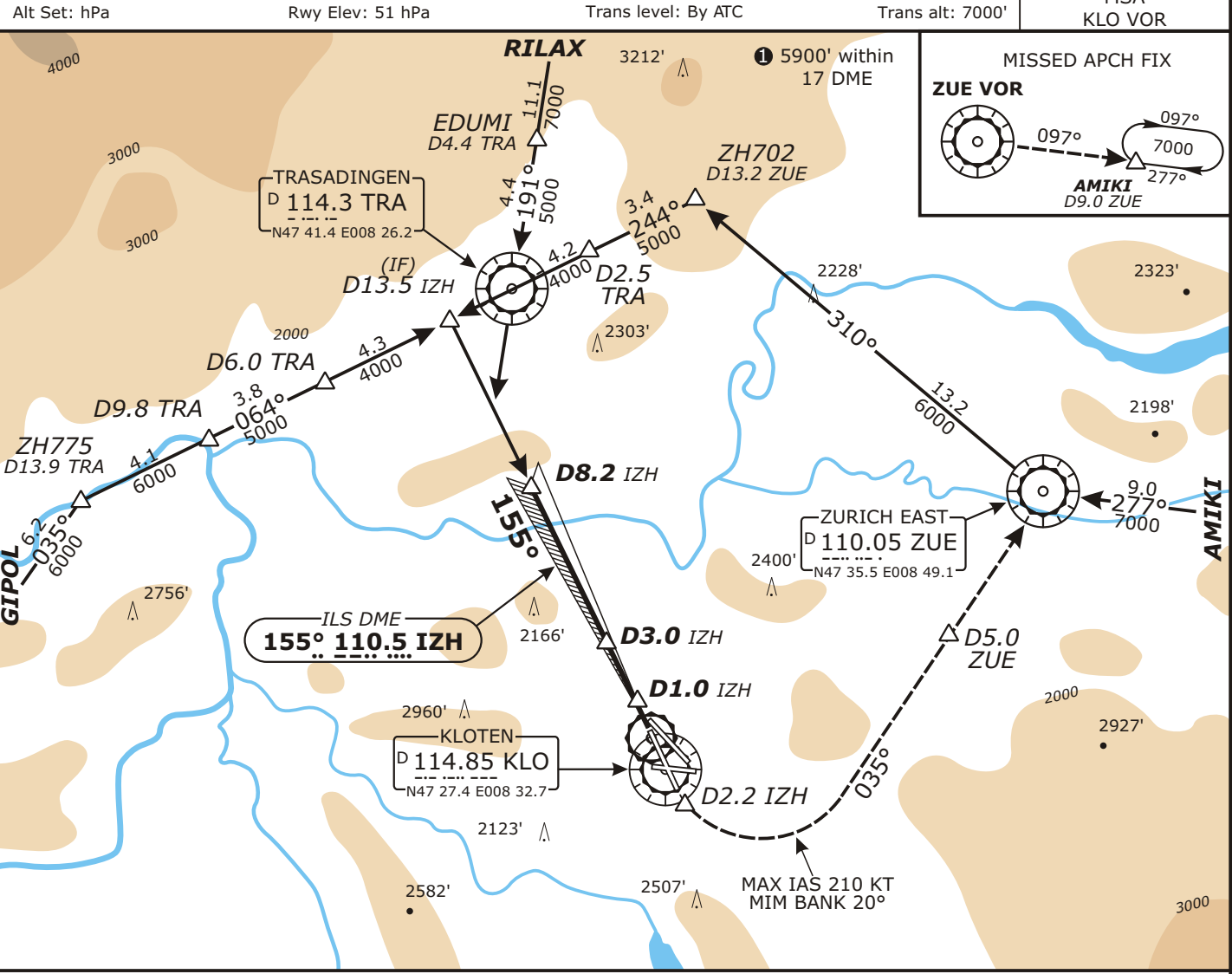
APP CHART NO.2
Revision 05 JUN 08

ZURICH, SWITZERLAND ILS DME Rwy 16 CAT II/III

Swiss Radar LSAS_CTR 128.05	ZURICH Arrival LSZH_APP 120.75	ZURICH Final LSZH_F_APP 125.35	ZURICH Tower LSZH_TWR 118.10	ZURICH Ground LSZH_S_GND 121.75
LOC IZH 110.5	Final Apch Crs 155°	GS D4.0 IZH 2719' (1303')	CAT I : RA 187' DH 1616' (200') CAT II: RA 93' DH 1516' (100')	Apt Elev 1416' FS: RWY 1416 RWY 1390'



MISSED APCH: Climb on track 155°. Initial climb to **5000'**. At D2.2 IZH passed the station, but not below 1900', turn LEFT (MAX IAS 210 KT/MIM BANK 20°) to intercept R-215 inbound to ZUE. At D5.0 ZUE continue climb to **7000'**. Cross ZUE VOR at 6000' or above and intercept R-097 ZUE to AMIKI.



Flight Simulator-OPS					STRAIGHT-IN LANDING RWY 16		CIRCLE-TO-LAND TO RWYS 10 & 28		Gnd speed-Kts						
					MINIMUMS		A B C D		Max Kts		70 90 100 120 140 160				
					ILS CAT I		RA 187'		110		377 485 539 647 755 862				
					ILS CAT II		RA 93'		135		MAP at D1.0 IZH (LOC out)				
							DH(A) 1516' (100')		180		LOC (GS out) with IZH DME: MDA(H) 1906' (490')				
							RVR 550m				It is pilot's responsibility to accept "swing over" procedure to rwy 16, when proposed by ATC.				
							CAT A				RWY 16 is approved for CAT II/III operations, special aircrew and ACFT certification required.				
							CAT B								
							CAT C								
							300m								

Valid for flight simulation use only - do not use for real life navigation

CHANGES: Proc, missed apch.