

LSZH/ZRH ZURICH

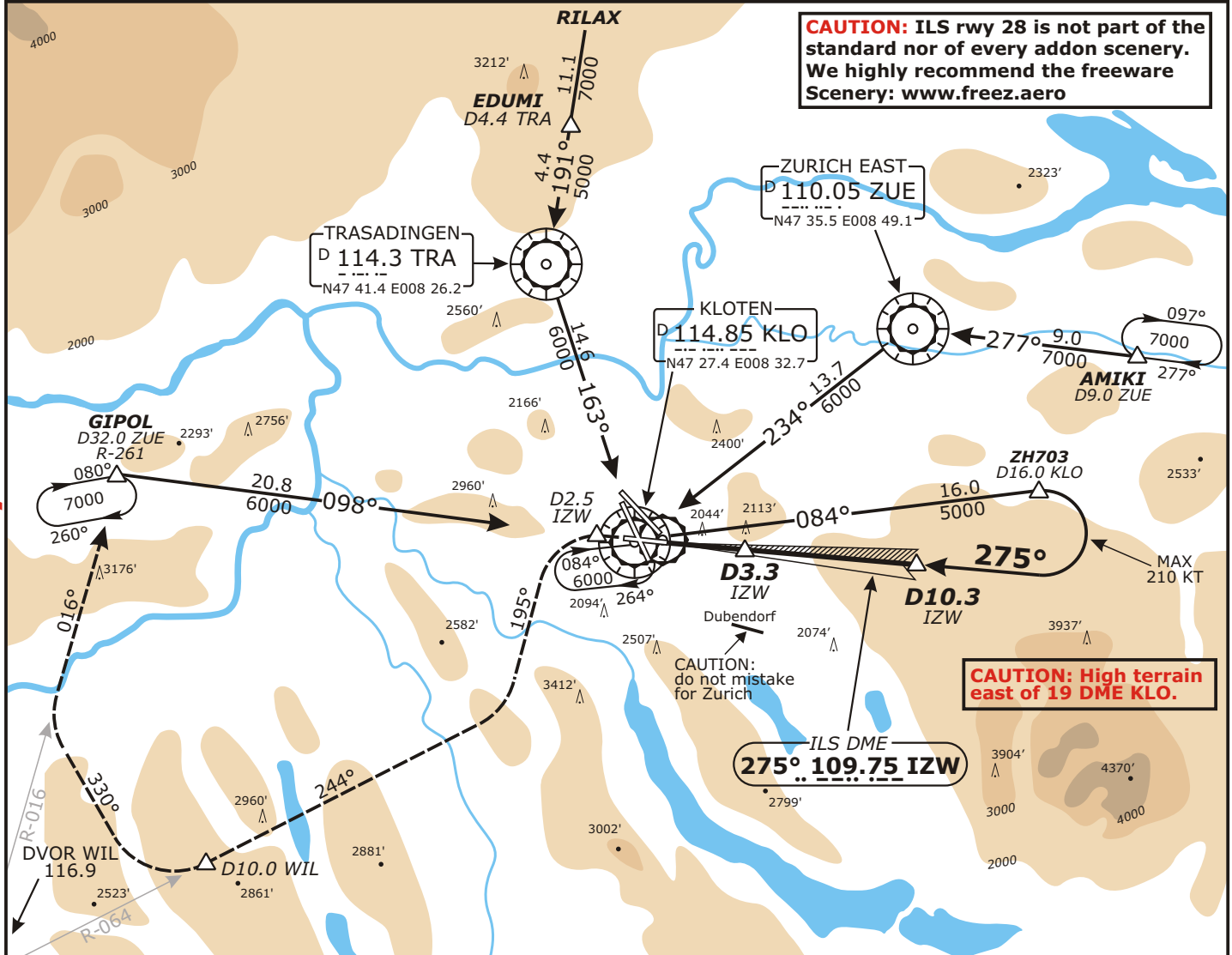
APP CHART NO.3
Revision 08 JAN 07

ZURICH, SWITZERLAND UNCATEGORIZED ILS DME Rwy 28

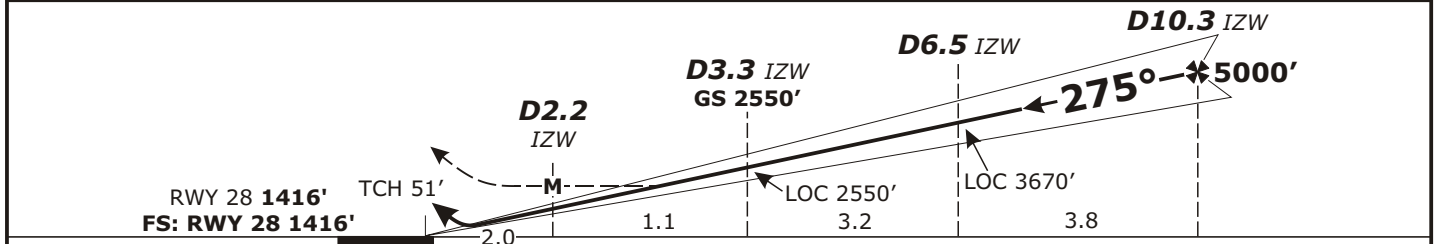
Swiss Radar LSAS_CTR 128.05	ZURICH Arrival LSZH_APP 120.75	ZURICH Final LSZH_F_APP 125.35	ZURICH Tower LSZH_TWR 118.10	ZURICH Apron LSZH_S_GND 121.75	ZURICH Apron LSZH_N_GND 121.85
LOC IZW 109.75	Final Apch Crs 275°	GS D3.3 IZW 2550' (1134')	ILS DH(H) Refer to Minimums	Apt Elev 1416' RWY 1416'	<p>MSA 25 NM KLO Inner circle 17 NM</p>

MISSED APCH: Climb straight ahead. **Initial climb to 4000'**. At D2.5 IZW passed the station, turn **LEFT** (MAX IAS 210 KT) onto track 195°, **then continue climb to 7000'**. Intercept R-064 WIL inbound. At D10.0 WIL turn **RIGHT** onto 330°, intercept R-016 WIL. Proceed to GIPOL.

Alt Set: hPa Rwy Elev: 51 hPa Trans level: By ATC Trans alt: 7000'



LOC	IZW DME	3.0	4.0	5.0	6.0	7.0	8.0	9.0	10.0
(GS out)	ALTITUDE	2450'	2800'	3150'	3500'	3850'	4200'	4550'	4900'



Flight Simulator-OPS		STRAIGHT-IN LANDING RWY 28					
Missed apch climb gradient mim 2.5% DA(H): CAT A: 2831' (1415') CAT B: 2842' (1426') CAT C: 2853' (1437') CAT D: 2863' (1447')	ILS	Missed apch climb gradient mim 4.0% DA(H):					
		CAT A: 2147' (731')					
		CAT B: 2157' (741')					
		CAT C: 2168' (752')					
						Gnd speed-Kts: 70 90 100 120 140 160 Descent Gradient 3.30° or LOC Descent Gradient 5.7%: 417 532 591 710 828 946	
						LOC (GS out) Missed apch climb gradient mim 4% MDA(H) 2360' (944') 2.5% MDA(H) 3070' (1654')	

A	Visibility 4000m	Visibility 4300m
B		
C		
D		

Valid for flight simulation use only - do not use for real life navigation

CHANGES: New Procedure