

# LSZH/ZRH

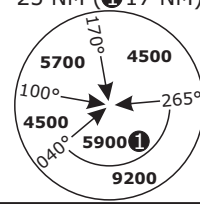
## ZURICH, SWITZERLAND

APP CHART NO.6  
Revision 12 NOV 15

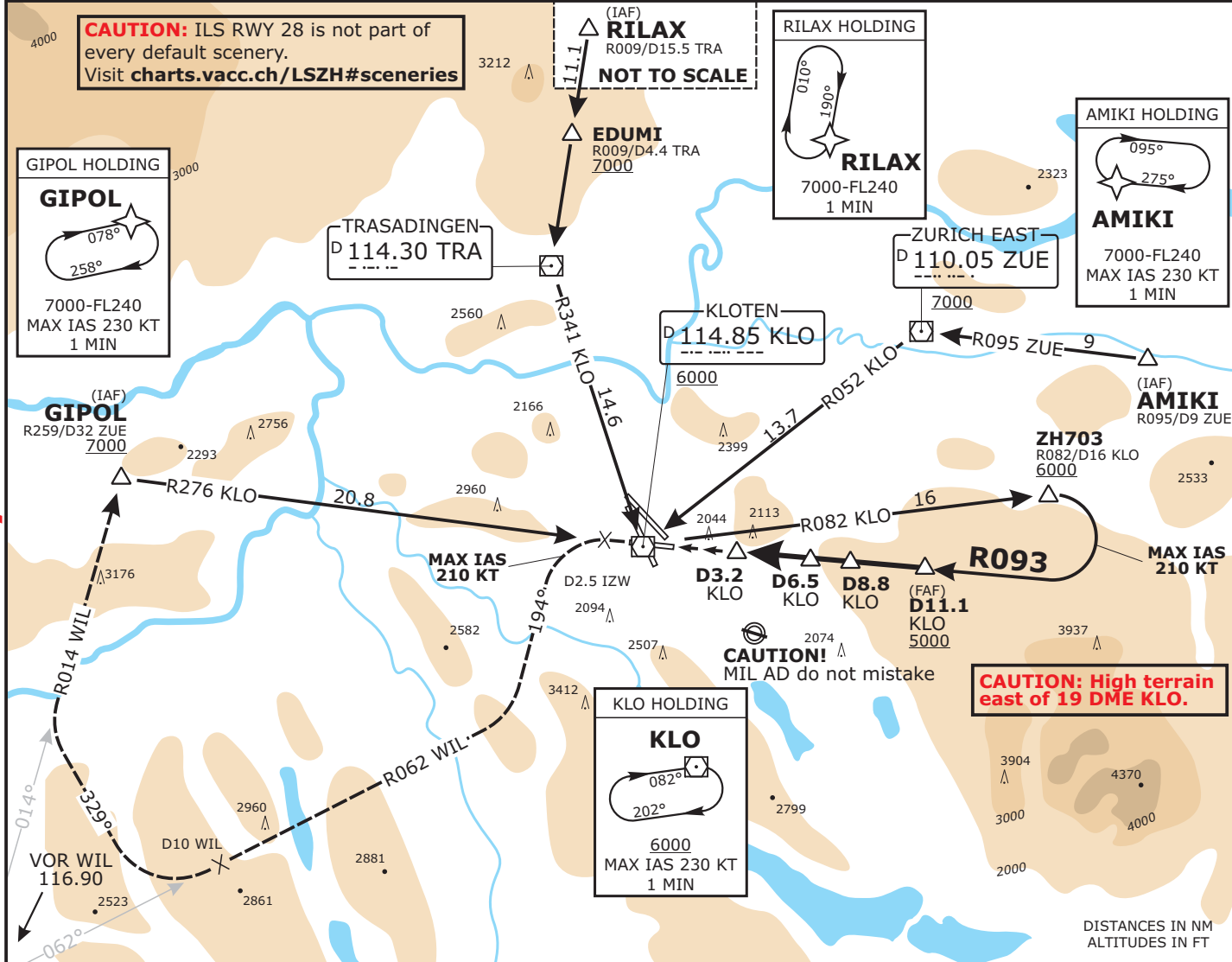
**VOR DME**  
**RWY 28**

SWISS Radar LSAS_CTR 128.05	ZURICH Arrival LSZH_APP   LSZH_W_APP 135.22   118.00	ZURICH Final LSZH_F_APP 125.32	ZURICH Tower LSZH_TWR 118.10	ZURICH Apron LSZH_S_GND   LSZH_N_GND 121.75   121.85	ZURICH ATIS LSZH_ATIS 125.72
VOR KLO <b>114.85</b>	Intercept Radial <b>093°</b>	Minimum Altitude <b>D6.5 KLO</b> <b>3390 (1980)</b>	DA(H) Refer to Minimums	Apt Elev 1417 RWY <b>1416</b>	<b>MSA KLO</b> 25 NM (17 NM)

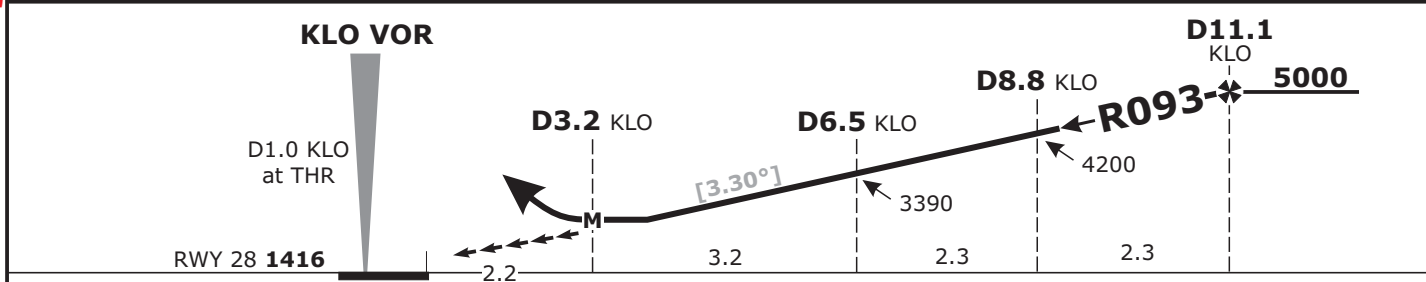
**MISSED APCH:** Climb on R093 KLO. Initial climb to **4000**. When passing KLO continue on R273 KLO, at D1.6 KLO past the station turn LEFT (MAX IAS 210 KT) onto track 194°, then continue climb to **7000**. Intercept R062 to WIL. At D10 WIL to the station turn RIGHT onto track 329°, intercept R014 from WIL. Proceed to GIPOL.



Alt Set: hPa      Rwy Elev: 51 hPa      Trans level: By ATC      Trans alt: 7000



<b>KLO DME</b>	4.0	5.0	6.0	7.0	8.0	9.0	10.0	11.0
<b>ALTITUDE</b>	2520	2870	3220	3570	3920	4270	4620	4970



<b>Flight Simulator-OPS</b>		STRAIGHT-IN APPROACH RWY 28						
<b>Missed apch climb gradient</b> mnm 2.5 % DA(H): <b>3070 (1660)</b>	<b>Missed apch climb gradient</b> mnm 4.0 % (to 4600) DA(H): <b>2370 (960)</b>	Gnd speed-Kts	70	90	100	120	140	160
		ROD ILS GS 3.30° or LOC Descent Gradient 5.7%	409	526	584	701	818	934
MAP at D3.2 KLO Do not confuse RWY 32 with RWY 28. Expect turbulences on short final during south-westerly winds.		Remark: RWY 28 is a <b>non-instrument runway</b> .						
Visibility 4300m, Ceiling 1200 AGL								

Valid for flight simulation use only - do not use for real life navigation

CHANGES: Mag Variation, MSA, Editorial