

LSZH/ZRH

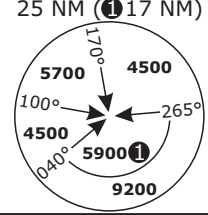
ZURICH, SWITZERLAND

APP CHART NO.8
Revision 12 NOV 15

ILS/LOC DME

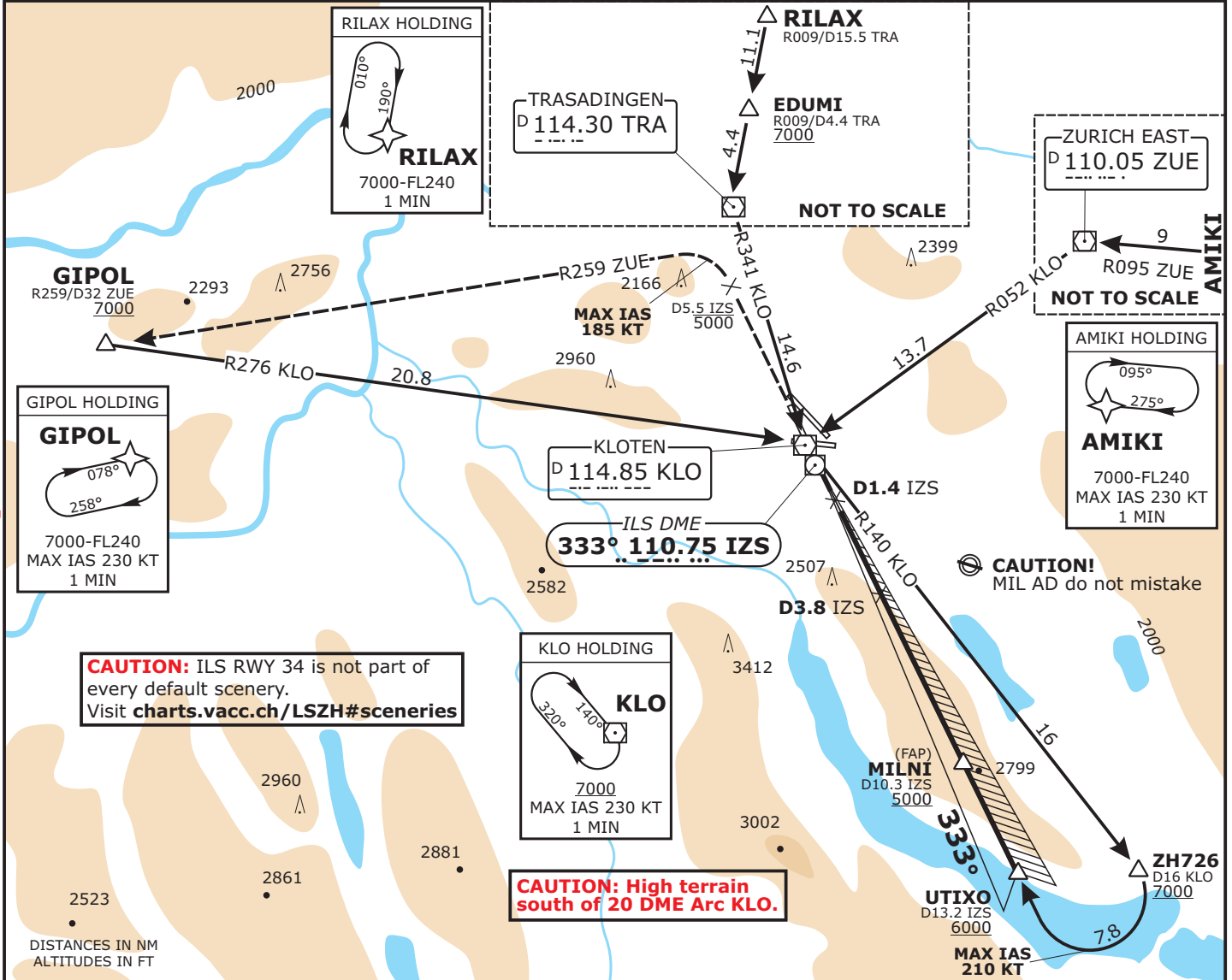
RWY 34 CAT I

SWISS Radar LSAS_CTR 128.05	ZURICH Arrival LSZH_APP LSZH_W_APP 135.22 118.00	ZURICH Final LSZH_F_APP 125.32	ZURICH Tower LSZH_TWR 118.10	ZURICH Apron LSZH_S_GND LSZH_N_GND 121.75 121.85	ZURICH ATIS LSZH_ATIS 125.72
LOC IZS 110.75	Final Apch Crs 333°	GS D3.8 IZS 2710 (1322)	ILS DA(H) Refer to Minimums	Apt Elev 1417 FS: RWY 1416 RWY 1388	MSA KLO 25 NM (17 NM)



MISSED APCH: Climb straight ahead. Initial climb to **5000**. At D5.5 IZS past the station turn LEFT (MAX IAS 185 KT during turn). Intercept R259 from ZUE. Continue climb to **7000**. Proceed to GIPOL.

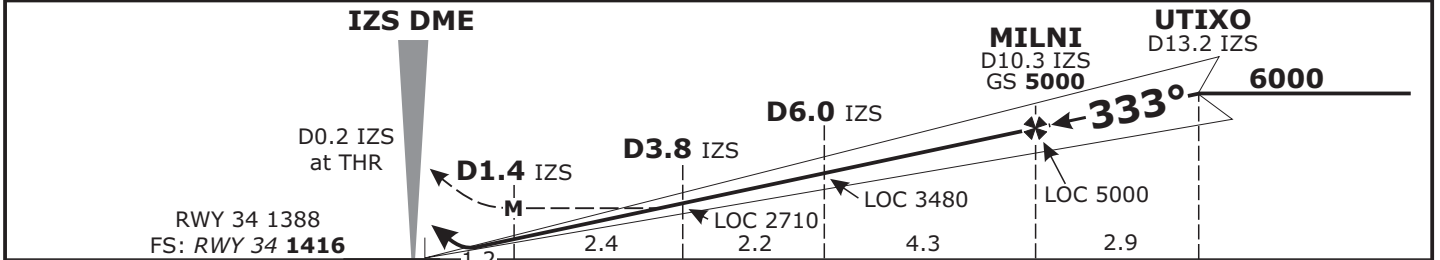
Alt Set: hPa Rwy Elev: 51 hPa Trans level: By ATC Trans alt: 7000



CAUTION: ILS RWY 34 is not part of every default scenery. Visit charts.vacc.ch/LSZH#sceneries

CAUTION: High terrain south of 20 DME Arc KLO.

IZS DME	2.0	3.0	4.0	5.0	7.0	8.0	9.0	11.0	12.0	13.0
ALTITUDE	2080	2430	2780	3130	3830	4180	4530	5230	5580	5930



Flight Simulator-OPS		STRAIGHT-IN APPROACH RWY 34		Gnd speed-Kts									
Missed apch climb gradient mnm 2.5 % DA(H): CAT A: 1591 (203) CAT B: 1601 (213) CAT C: 1614 (226) CAT D: 1624 (236)	Missed apch climb gradient mnm 3.0 % DA(H): 1588 (200)	ROD ILS GS 3.30° or LOC Descent Gradient 5.7%						70	90	100	120	140	160
		MAP at D1.4 IZS (LOC out)						409	526	584	701	818	934
Visibility 750m, Ceiling 300 AGL		LOC/DME RWY 34 (GS out) DA(H): 2070 (690)						Visibility 2500m, Ceiling 800 AGL					

Valid for flight simulation use only - do not use for real life navigation

CHANGES: Headings, missed APCH, MSA