

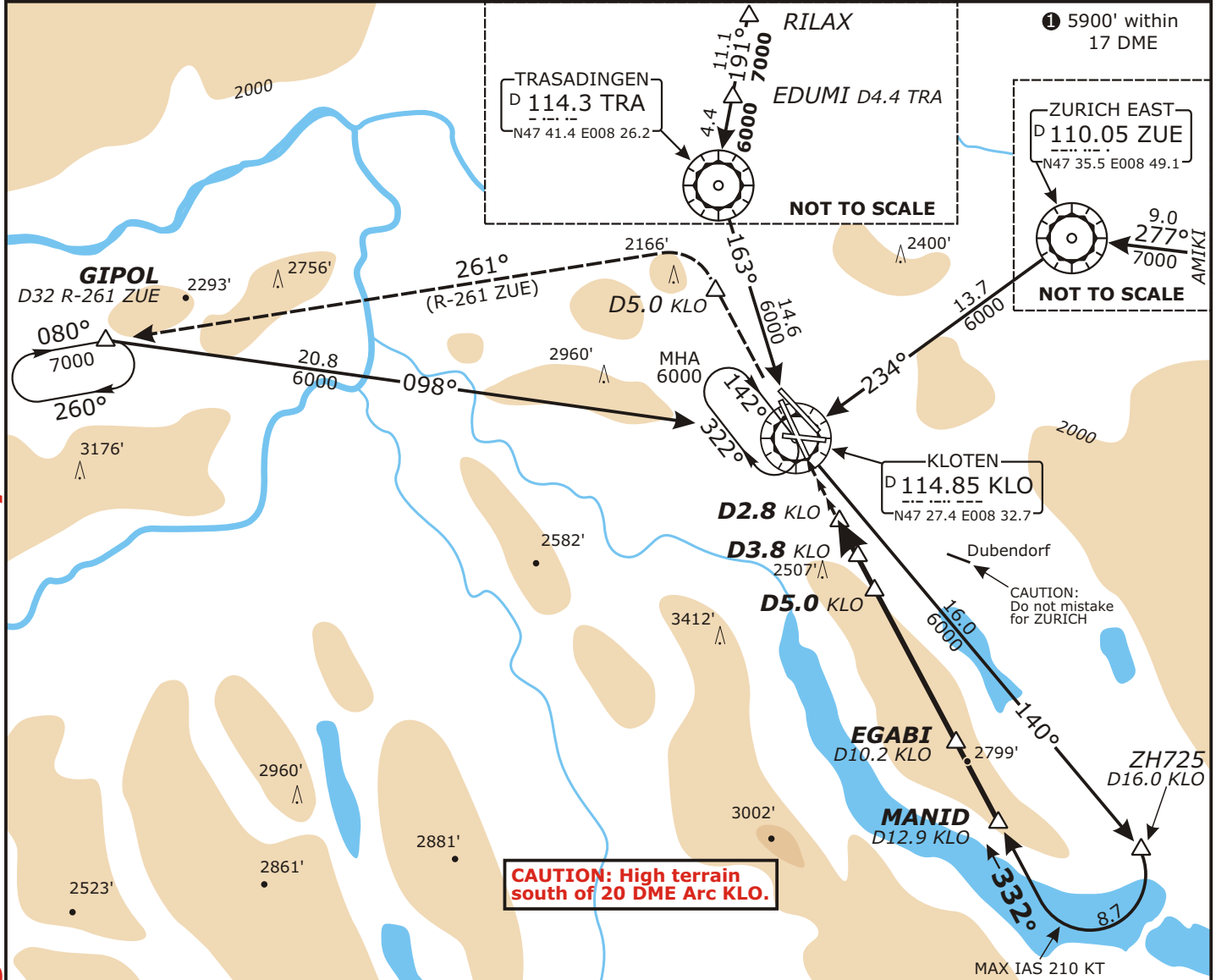
LSZH/ZRH ZURICH

APP CHART NO.6
Revision 08 JAN 07

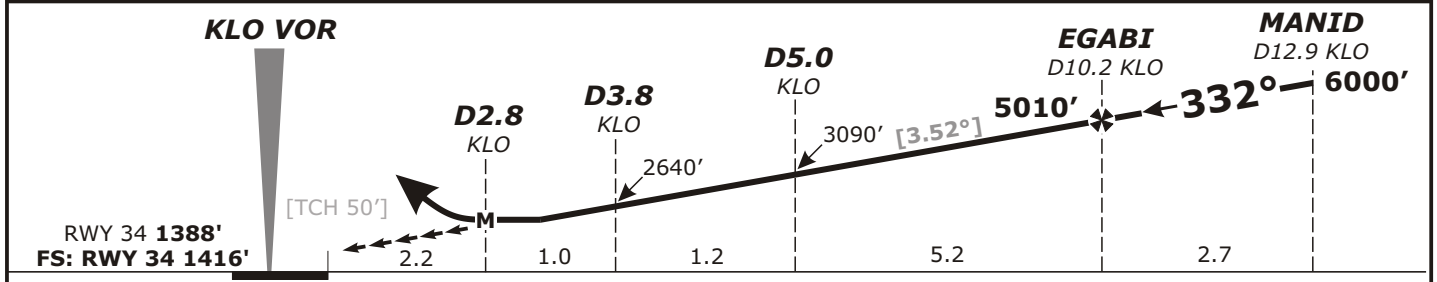
ZURICH, SWITZERLAND (GPS) VOR DME Rwy 34

Valid for flight simulation use only - do not use for real life navigation

Swiss Radar LSAS_CTR 128.05	ZURICH Arrival LSZH_APP 120.75	ZURICH Final LSZH_F_APP 125.35	ZURICH Tower LSZH_TWR 118.10	ZURICH Ground LSZH_GND 121.90
VOR KLO 114.85	Final Apch Crs 332°	Minimum Alt EGABI 5010' (3584')	MDA(H) 2430' (1014')	Apt Elev 1416' FS: RWY 1416 RWY 1388'
MISSED APCH: Climb on R-152 inbound KLO VOR. Initial climb to 5000'. Continue on R-332 KLO. At D5.0 passed the station turn LEFT. Continue climb to 7000'. Intercept R-261 ZUE. Proceed to GIPOL.				
Alt Set: hPa	Rwy Elev: 51 hPa	Trans level: By ATC	Trans alt: 7000'	



KLO DME	4.0	5.0	6.0	7.0	8.0	9.0	10.0	11.0	12.0
ALTITUDE	2720'	3090'	3460'	3830'	4190'	4560'	4930'	5300'	5670'



Flight Simulator-OPS STRAIGHT-IN LANDING RWY 34 MDA(H) 2430' (1014')	Gnd speed-Kts	70	90	100	120	140	160
	Descent Gradient 6.15% or Descent angle [3.52°]	436	561	623	748	872	997
	MAP at D2.8 KLO						

CHANGES: Communications.