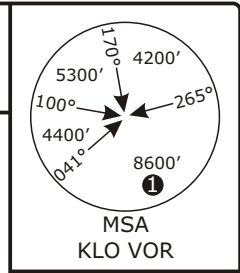


Valid for flight simulation use only - do not use for real life navigation

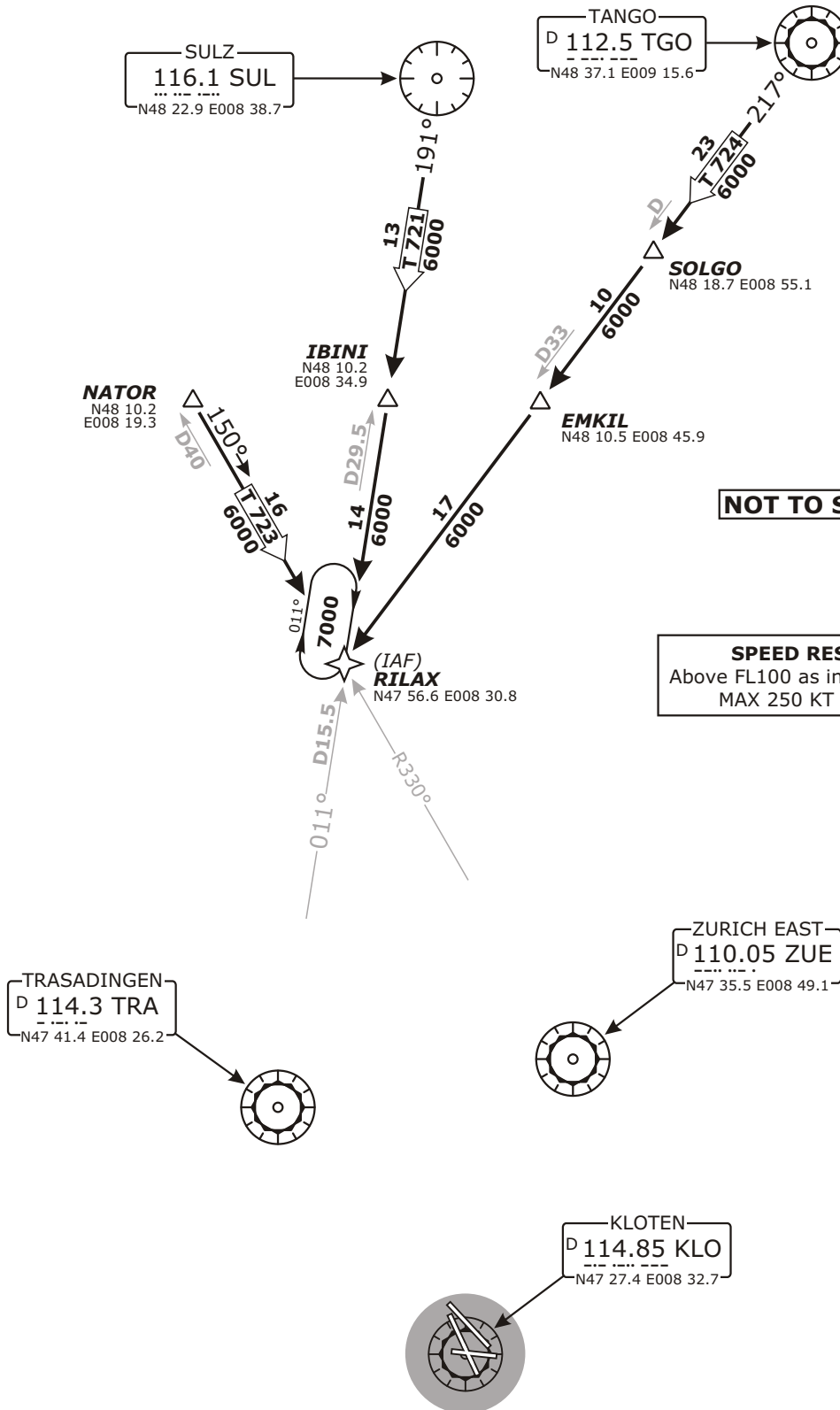
Swiss Radar LSAS_CTR 128.05	ZURICH Arrival LSZH_APP 120.75	ZURICH Final LSZH_F_APP 125.35	Apt Elev <b>1416'</b>	Alt Set: hPa (IN on request) Trans level: by ATC Trans alt: 7000'
-----------------------------------	--------------------------------------	--------------------------------------	--------------------------	---



① 5900' within 17 DME

**RNAV TRANSITIONS**

TO RILAX HOLDING  
FOR CONTINUATION AFTER RILAX REFER TO CHART NO.3



**NOT TO SCALE**

**SPEED RESTRICTION**  
Above FL100 as instructed by Radar.  
MAX 250 KT below FL100.

CHANGES: Transition to TRA transferred.