

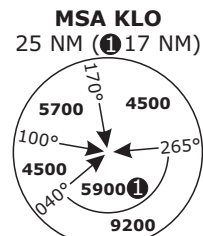
SWISS Radar
LSAS_CTR
128.05

ZURICH Arrival
LSZH_APP | LSZH_W_APP
135.22 | 118.00

ZURICH Departure
LSZH_DEP
125.95

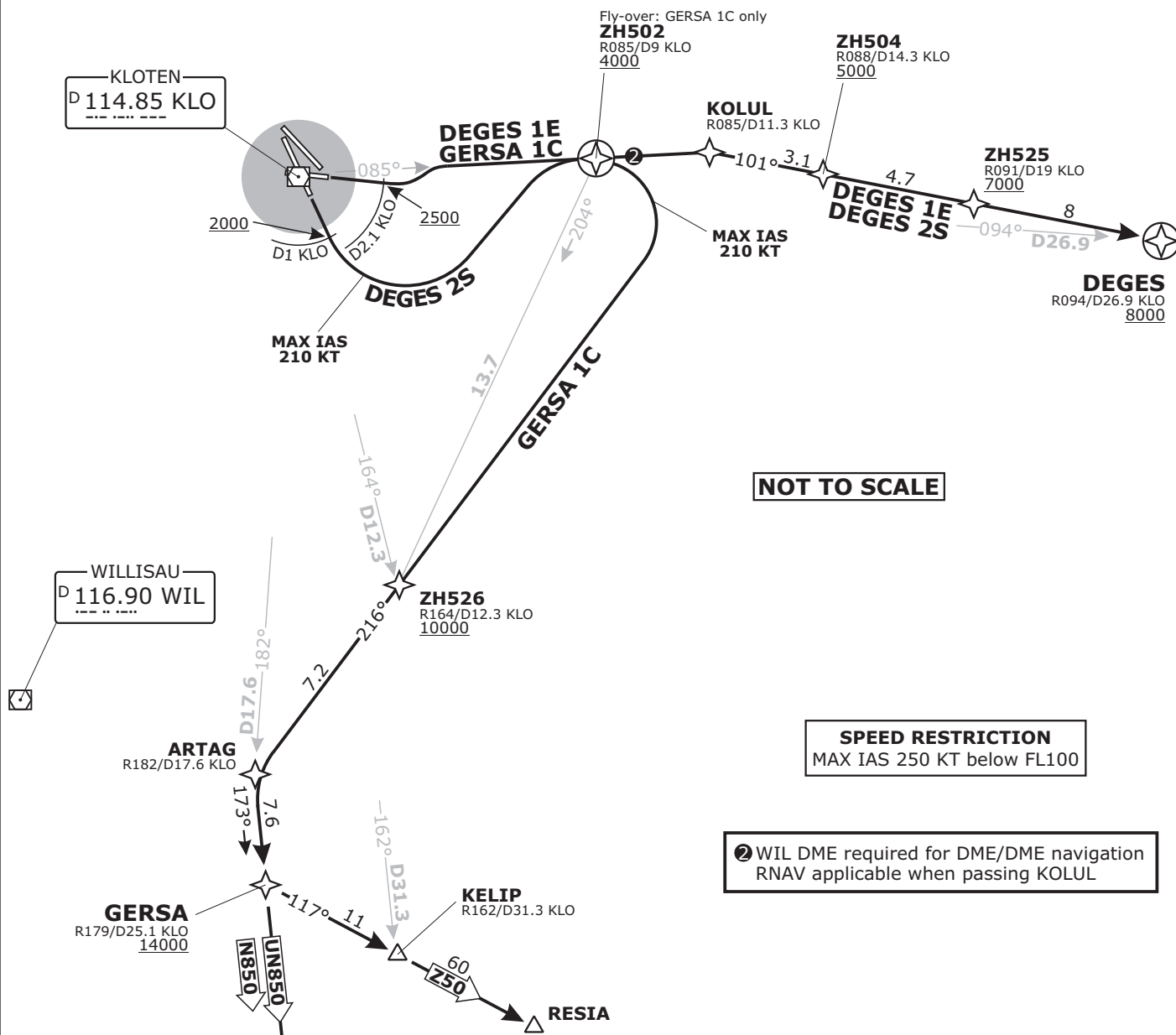
Apt Elev
1417

Alt Set: hPa (IN on request)
Trans level: by ATC
Trans alt: 7000



DEGES, GERSA
RNAV 1 DEPARTURES
RWYS 10, 16

FOR ROUTE CONTINUATION AFTER DEGES
REFER TO DEPARTURE AREA CHART NO.1



NOT TO SCALE

SPEED RESTRICTION
MAX IAS 250 KT below FL100

② WIL DME required for DME/DME navigation
RNAV applicable when passing KOLUL

DISTANCES IN NM
ALTITUDES IN FT

Altitude and speed restrictions see graphical chart

Initial climb clearance 5000

SID	RWY	ROUTING
DEGES 1E	10	Climb straight ahead. At 2500 but not before D2.1 KLO turn LEFT, intercept R085 from KLO. Proceed via ZH502, KOLUL, ZH504 and ZH525 to DEGES.
DEGES 2S	16	Climb straight ahead. At 2000 but not before D1 KLO turn LEFT, intercept R085 from KLO. Proceed via ZH502, KOLUL, ZH504 and ZH525 to DEGES.
GERSA 1C	10	Climb straight ahead. At 2500 but not before D2.1 KLO turn LEFT, intercept R085 from KLO. At ZH502/D9 KLO turn RIGHT. Proceed via ZH526 and ARTAG to GERSA.

CONTINUATION

To RESIA: Proceed along airway **Z 50**.

Other directions: Proceed along airways **N/UN 850**.

Valid for flight simulation use only - do not use for real life navigation