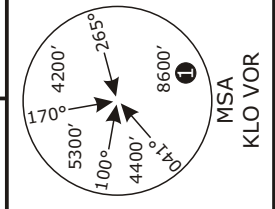
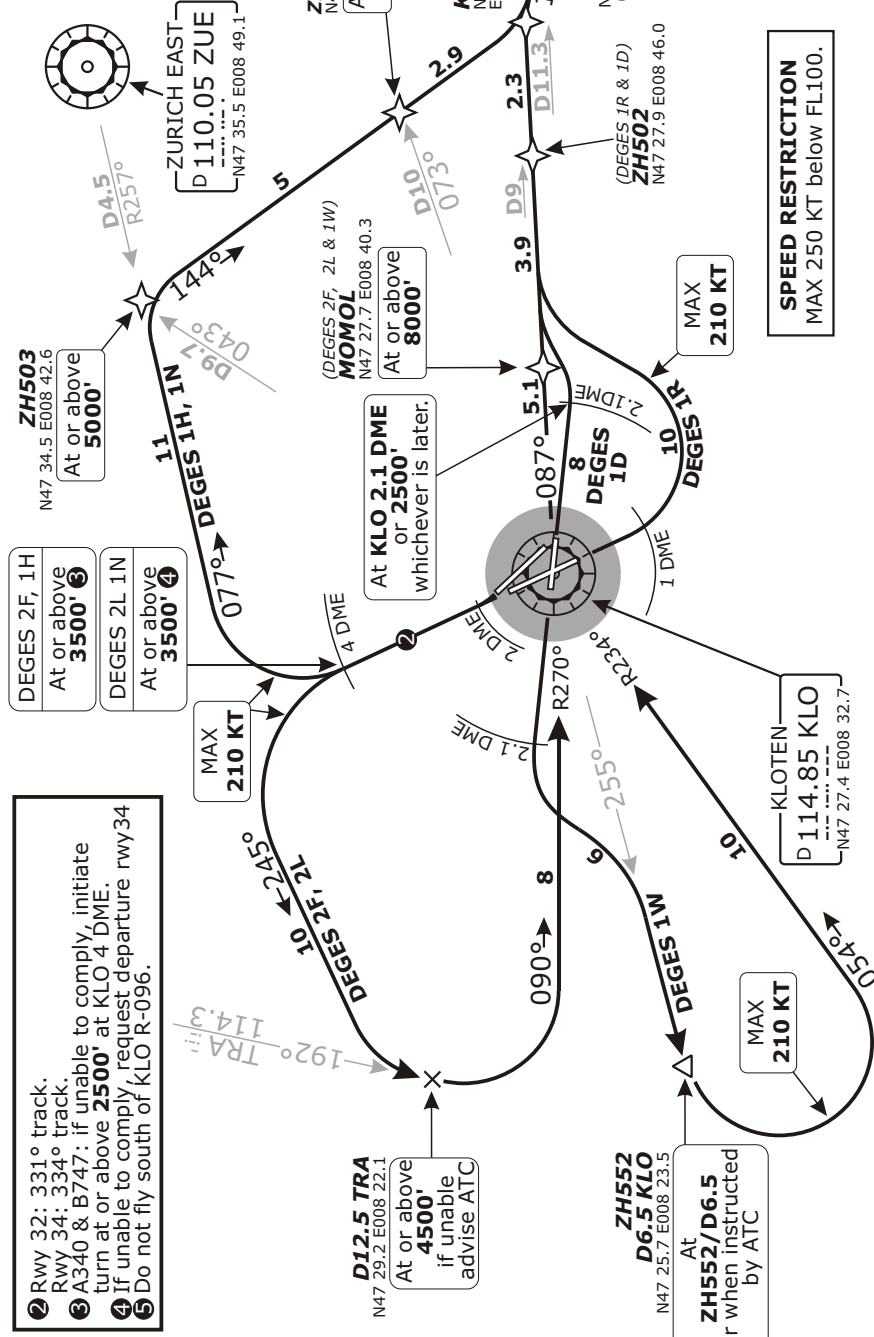


Valid for flight simulation use only - do not use for real life navigation

Swiss Radar LSAS_CTR 128.05	ZURICH Arrival LSZH_APP 120.75	ZURICH Departure LSZH_DEP 125.95	Apt Elev 1416'	Alt Set: hPa (IN on request) Trans level: by ATC Trans alt: 7000'
-----------------------------------	--------------------------------------	--	--------------------------	---



DEGES ONE DELTA (DEGES 1D)
DEGES TWO FOXTROT (DEGES 2F)
DEGES ONE HOTEL (DEGES 1H)
DEGES TWO LIMA (DEGES 2L)
DEGES ONE NOVEMBER (DEGES 1N)
DEGES ONE ROMEO (DEGES 1R)
DEGES ONE WHISKEY (DEGES 1W)
RWYS 10, 16, 28, 32, 34
RNAV DEPARTURES
 FOR ROUTE CONTINUATION AFTER DEGES
 REFER TO SID CHART NO. 6



Initial climb clearance 5000'		ROUTING	
SID	RWY		
DEGES 1D	10	Straight ahead to KLO 2.1 DME or 2500' , whichever is later, intercept KLO R-087 via ZH502 to KOLUL, then via ZH504 and ZH525 to DEGES.	
DEGES 2F	34	334° track, at KLO 4 DME turn LEFT, 245° track, intercept TRA R-192 to D12.5 TRA, intercept KLO R-270 inbound to KLO, then via MOMOL to DEGES.	
DEGES 1H		334° track, at KLO 4 DME turn RIGHT, intercept ZUE R-257 inbound to KOLUL, then via ZH506 and ZH525 to DEGES.	
DEGES 2L	32	Straight ahead to KLO 2 DME, turn RIGHT, 331° track, at KLO 4 DME turn LEFT, 245° track, intercept TRA R-192 to D12.5 TRA, intercept KLO R-270 inbound to KLO, then via MOMOL to KOLUL, the via ZH504 and ZH525 to DEGES.	
DEGES 1N		Straight ahead to KLO 2 DME, turn RIGHT, 331° track, at KLO 4 DME turn RIGHT, intercept ZUE R-257 inbound to ZH503, then via ZH503, then via ZH506 to KOLUL, then via ZH504 and ZH525 to DEGES.	
DEGES 1R	16	Climb straight ahead, - if in VMC turn LEFT as soon as possible, but before KLO 1 DME, maintain visual ground contact up to 2800', or - if in IMC turn LEFT (MAX IAS 210KT) at 2400', or KLO 2.4 DME, whichever is earlier, earliest turning point KLO 1 DME, intercept KLO R-087 to ZH502, then to KOLUL, then via ZH504 and ZH525 to DEGES.	
DEGES 1W	28	Straight ahead, at KLO 2.1 DME, turn LEFT, intercept KLO R-255, at ZH552/D6.5 KLO or when instructed by ATC turn LEFT, intercept KLO R-234 inbound to KLO, then via MOMOL to KOLUL, then via ZH504 and ZH525 to DEGES.	

CHANGES: Chart reindexed.