

Valid for flight simulation use only - do not use for real life navigation

CHANGES: App frequency.

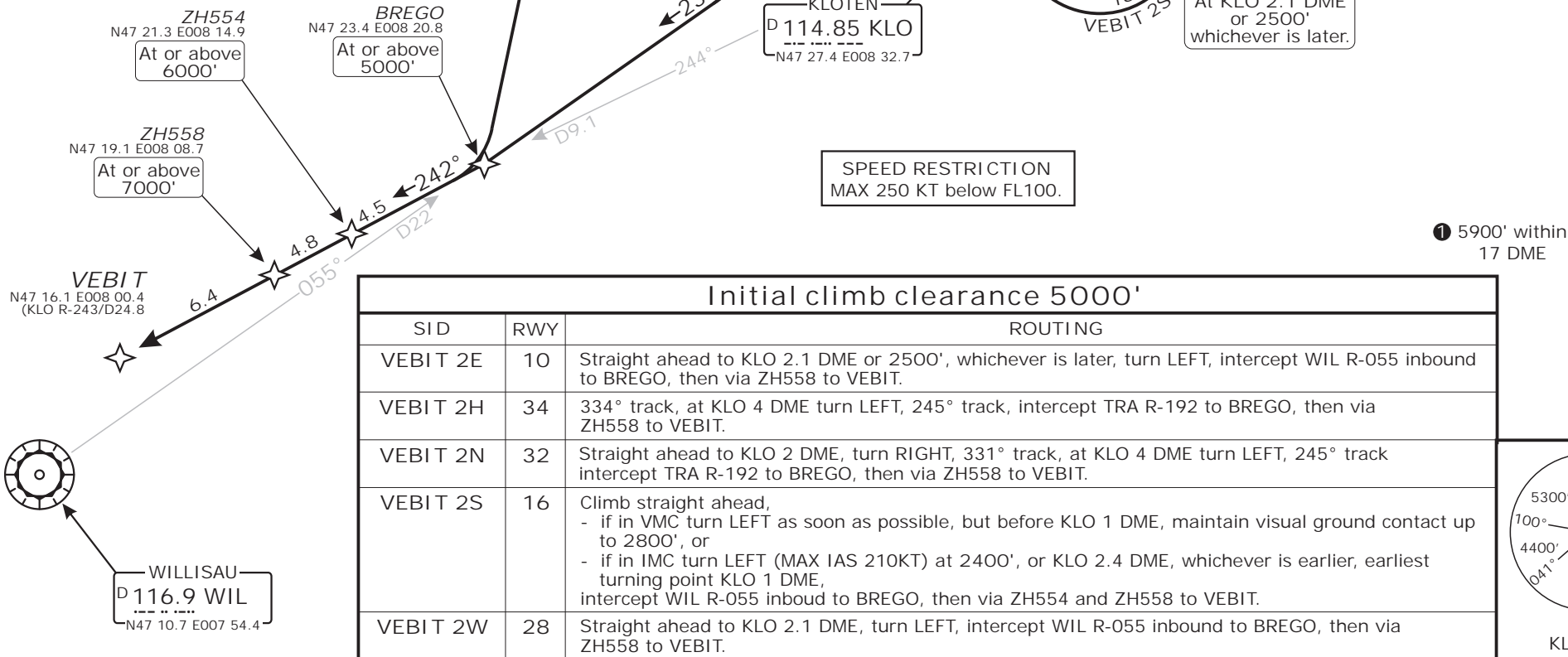
© VAACC Switzerland

http://www.vaacc.ch/

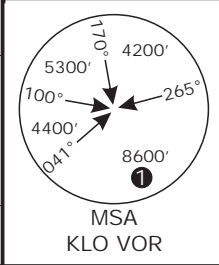
chartts@vaacc.ch

NOT TO SCALE

- ② Rwy 32: 331° track, Rwy 34: 334° track.
- ③ If unable to comply, initiate turn at or above 2500' at KLO 4 DME.
- ④ If unable to comply, request departure Rwy34.



Initial climb clearance 5000'		
SID	RWY	ROUTING
VEBIT 2E	10	Straight ahead to KLO 2.1 DME or 2500', whichever is later, turn LEFT, intercept WIL R-055 inbound to BREGO, then via ZH558 to VEBIT.
VEBIT 2H	34	334° track, at KLO 4 DME turn LEFT, 245° track, intercept TRA R-192 to BREGO, then via ZH558 to VEBIT.
VEBIT 2N	32	Straight ahead to KLO 2 DME, turn RIGHT, 331° track, at KLO 4 DME turn LEFT, 245° track intercept TRA R-192 to BREGO, then via ZH558 to VEBIT.
VEBIT 2S	16	Climb straight ahead, - if in VMC turn LEFT as soon as possible, but before KLO 1 DME, maintain visual ground contact up to 2800', or - if in IMC turn LEFT (MAX IAS 210KT) at 2400', or KLO 2.4 DME, whichever is earlier, earliest turning point KLO 1 DME, intercept WIL R-055 inbound to BREGO, then via ZH554 and ZH558 to VEBIT.
VEBIT 2W	28	Straight ahead to KLO 2.1 DME, turn LEFT, intercept WIL R-055 inbound to BREGO, then via ZH558 to VEBIT.



VEBIT TWO ECHO (VEBIT 2E)
 VEBIT TWO HOTEL (VEBIT 2H)
 VEBIT TWO NOVEMBER (VEBIT 2N)
 VEBIT TWO SIERRA (VEBIT 2S)
 VEBIT TWO WHISKEY (VEBIT 2W)
 RWYS 10, 16, 28, 32, 34
 RNAV DEPARTURES
 FOR ROUTE CONTINUATION AFTER VEBIT
 REFER TO SID CHART NO. 7

Swiss Radar LSAS_CTR 128.05	ZURICH Arrival LSZH_APP LSZH_W_APP 131.15 118.0	ZURICH Departure LSZH_DEP 125.95	Apt Elev 1416'	Alt Set: hPa (IN on request) Trans level: by ATC Trans alt: 7000'
-----------------------------------	---	--	-------------------	---

LSZH/ZRH ZURICH
 SID CHART NO. 3
 Revision 25 AUG 11
 ZURICH, SWITZERLAND
 RNAV SID