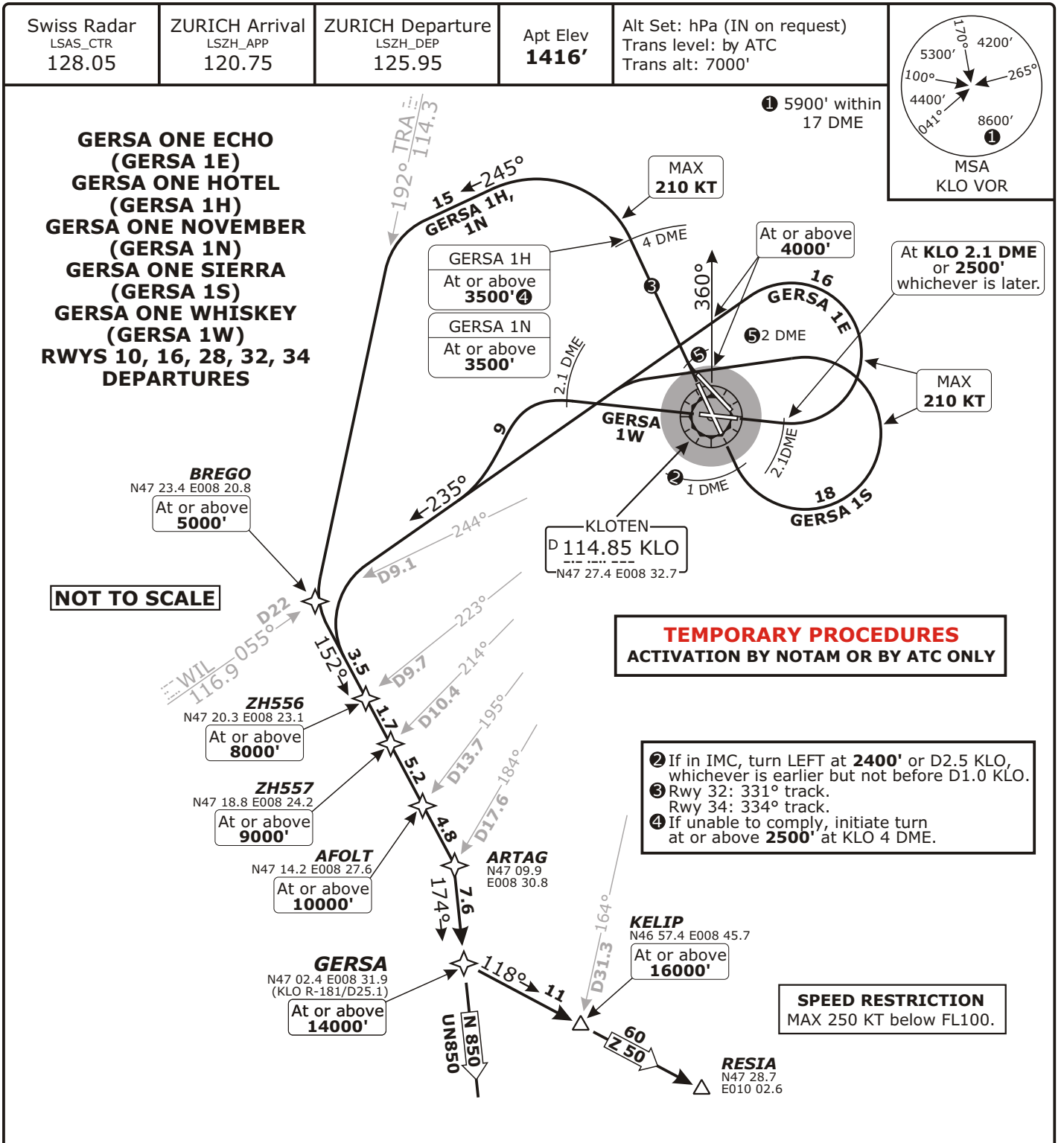


Valid for flight simulation use only - do not use for real life navigation



| Initial climb clearance 5000' | | |
|--------------------------------------|-----|---|
| SID | RWY | ROUTING |
| GERSA 1E | 10 | Straight ahead to KLO 2.1 DME or 2500' , whichever is later, turn LEFT, intercept WIL R-055 inbound to BREGO, then via ZH556, ZH557 and AFOLT to ARTAG, then to GERSA. |
| GERSA 1H | 34 | 334° track, at KLO 4 DME turn LEFT, 245° track, intercept TRA R-192 to BREGO, then via ZH556, ZH557 and AFOLT to ARTAG, then to GERSA. |
| GERSA 1N | 32 | Straight ahead to KLO 2 DME, turn RIGHT, 331° track, at KLO 4 DME turn LEFT, 245° track, intercept TRA R-192 to BREGO, then via ZH556, ZH557 and AFOLT to ARTAG, then to GERSA. |
| GERSA 1S | 16 | Straight ahead, if in VMC turn LEFT as soon as possible, but not before KLO 1 DME, or ②, maintain visual ground contact up to 2800' , intercept WIL R-055 inbound to BREGO, then via ZH556, ZH557 and AFOLT to ARTAG, then to GERSA. |
| GERSA 1W | 28 | Straight ahead to KLO 2.1 DME, turn LEFT, intercept WIL R-055 inbound to BREGO, then via ZH556, ZH557 and AFOLT to ARTAG, then to GERSA. |

CONTINUATION

To RESIA: Proceed along airway **Z 50**.

Other directions: Proceed along airways **N/UN 850**.

CHANGES: Chart reindexed.