

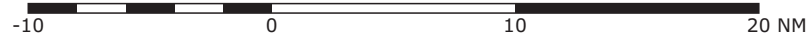
DISTANCES IN NM  
ALTITUDES IN FT

NOT TO SCALE

## NORTHBOUND & EASTBOUND TRANSIT ROUTES AFTER DEGES/SONGI/ZUE DEPARTURES

RNAV EQUIPMENT COMPULSORY FOR FLIGHTS  
AT OR ABOVE FL100

- ② For NON RNAV departures ONLY, **FL90** or below
- ③ For departures at or below **FL120**: DEGES - ROMGA - BODAN Z601 KPT
- ④ For departures with destination EDDM at **FL130** or above
- ⑤ For eastbound departures (not EDM) at **FL130** or above and departures planned at **FL200** or above to land in or overflying CZECH REP (LKAA)
- ⑥ For departures with destination LFST and departures at **FL140** or below
- ⑦ For departures with destination EDDS
- ⑧ For departures with destination EDDF and departures from **FL150** to **FL230**: DEGES - Z3 - ETAGO
- ⑨ For departures at **FL260** or above: DEGES - Z1 - ETAGO

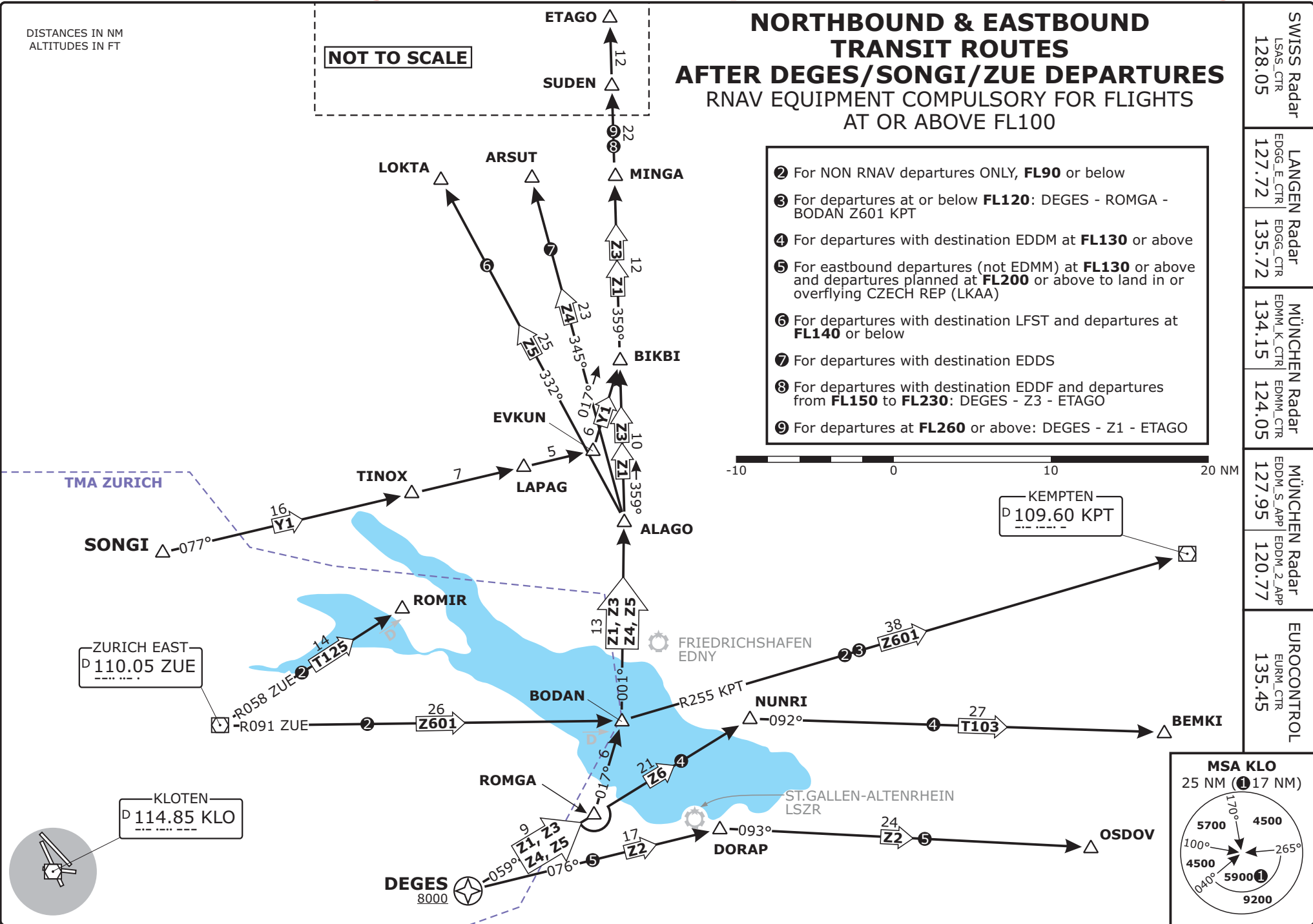
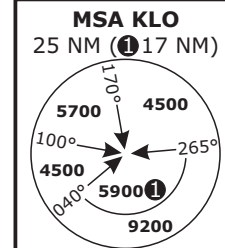


KEMPTEN  
D 109.60 KPT

TMA ZURICH

ZURICH EAST  
D 110.05 ZUE

KLOTEN  
D 114.85 KLO



**LSZH/ZRH**  
ZURICH, SWITZERLAND

DEPARTURE AREA CHART NO. 1  
Revision 12 NOV 15

**DEGES/SONGI/ZUE**  
AREA

SWISS Radar LSAS_CTR 128.05	LANGEN Radar EDGG_E_CTR 127.72	MÜNCHEN Radar EDMM_K_CTR 134.15	MÜNCHEN Radar EDDM_CTR 124.05	MÜNCHEN Radar EDDM_S_APP 127.95	MÜNCHEN Radar EDDM_2_APP 120.77	EUROCONTROL EUBM_CTR 135.45
-----------------------------------	--------------------------------------	---------------------------------------	-------------------------------------	---------------------------------------	---------------------------------------	-----------------------------------