

# Valid for flight simulation use only - do not use for real life navigation

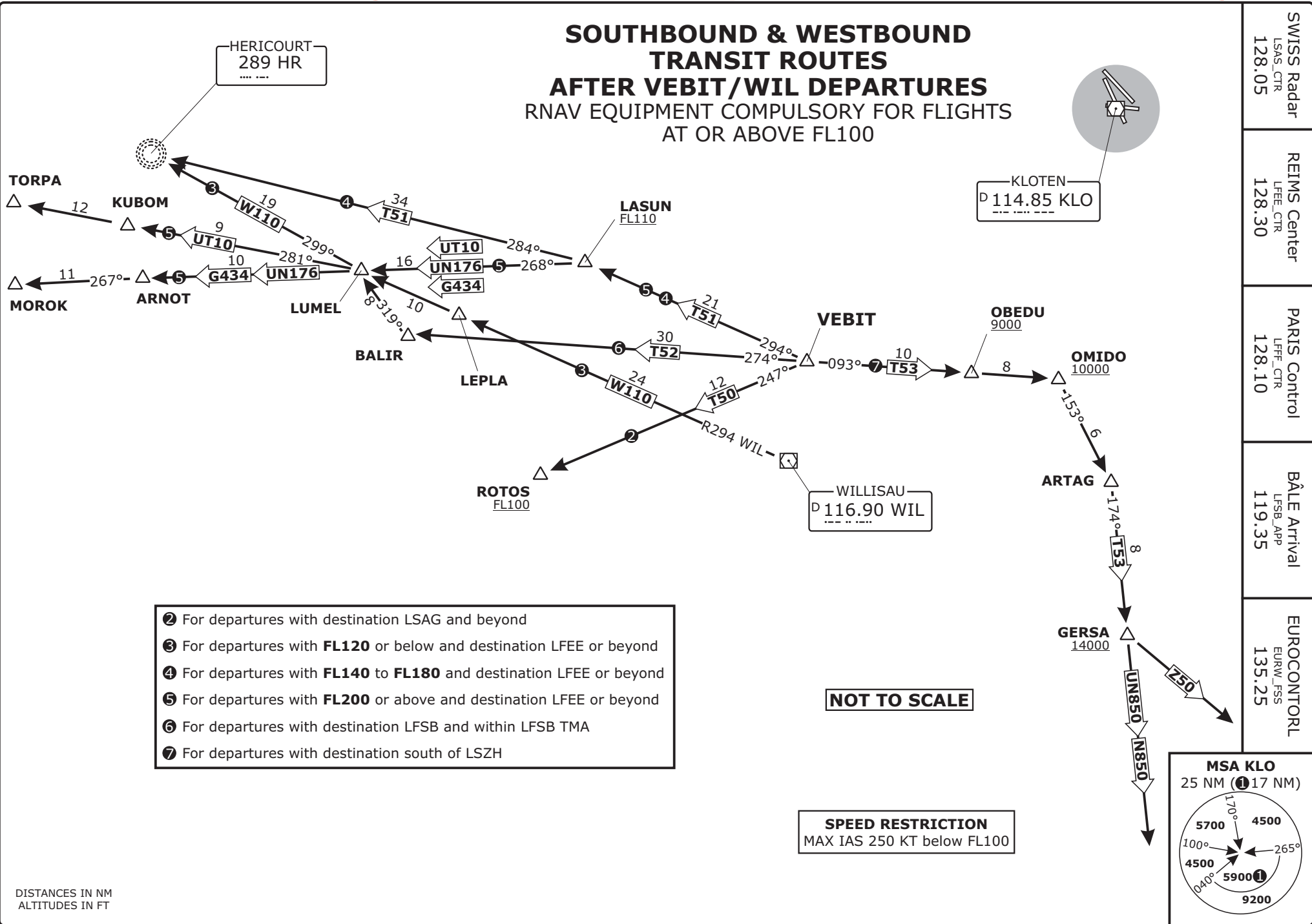
© VAACC Switzerland

http://www.vaacc.ch/

charts@vaacc.ch

## SOUTHBOUND & WESTBOUND TRANSIT ROUTES AFTER VEBIT/WIL DEPARTURES

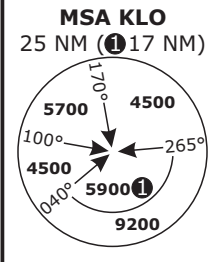
RNAV EQUIPMENT COMPULSORY FOR FLIGHTS  
AT OR ABOVE FL100



- ② For departures with destination LSAG and beyond
- ③ For departures with **FL120** or below and destination LFEE or beyond
- ④ For departures with **FL140** to **FL180** and destination LFEE or beyond
- ⑤ For departures with **FL200** or above and destination LFEE or beyond
- ⑥ For departures with destination LFSB and within LFSB TMA
- ⑦ For departures with destination south of LSZH

NOT TO SCALE

**SPEED RESTRICTION**  
MAX IAS 250 KT below FL100



<b>LSZH/ZRH</b> ZURICH, SWITZERLAND	DEPARTURE AREA CHART NO.2 Revision 12 NOV 15
SWISS Radar LSAS_CTR 128.05	REIMS Center LFEE_CTR 128.30
PARIS Control LFFE_CTR 128.10	BÂLE Arrival LFSB_APP 119.35
EUROCONTORL EURW_FSS 135.25	

DISTANCES IN NM  
ALTITUDES IN FT