

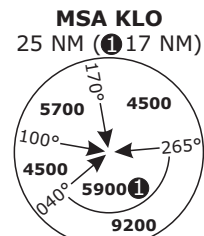
SWISS Radar
LSAS_CTR
128.05

ZURICH Arrival
LSZH_APP | LSZH_W_APP
135.22 | 118.00

ZURICH Departure
LSZH_DEP
125.95

Apt Elev
1417

Alt Set: hPa (IN on request)
Trans level: by ATC
Trans alt: 7000

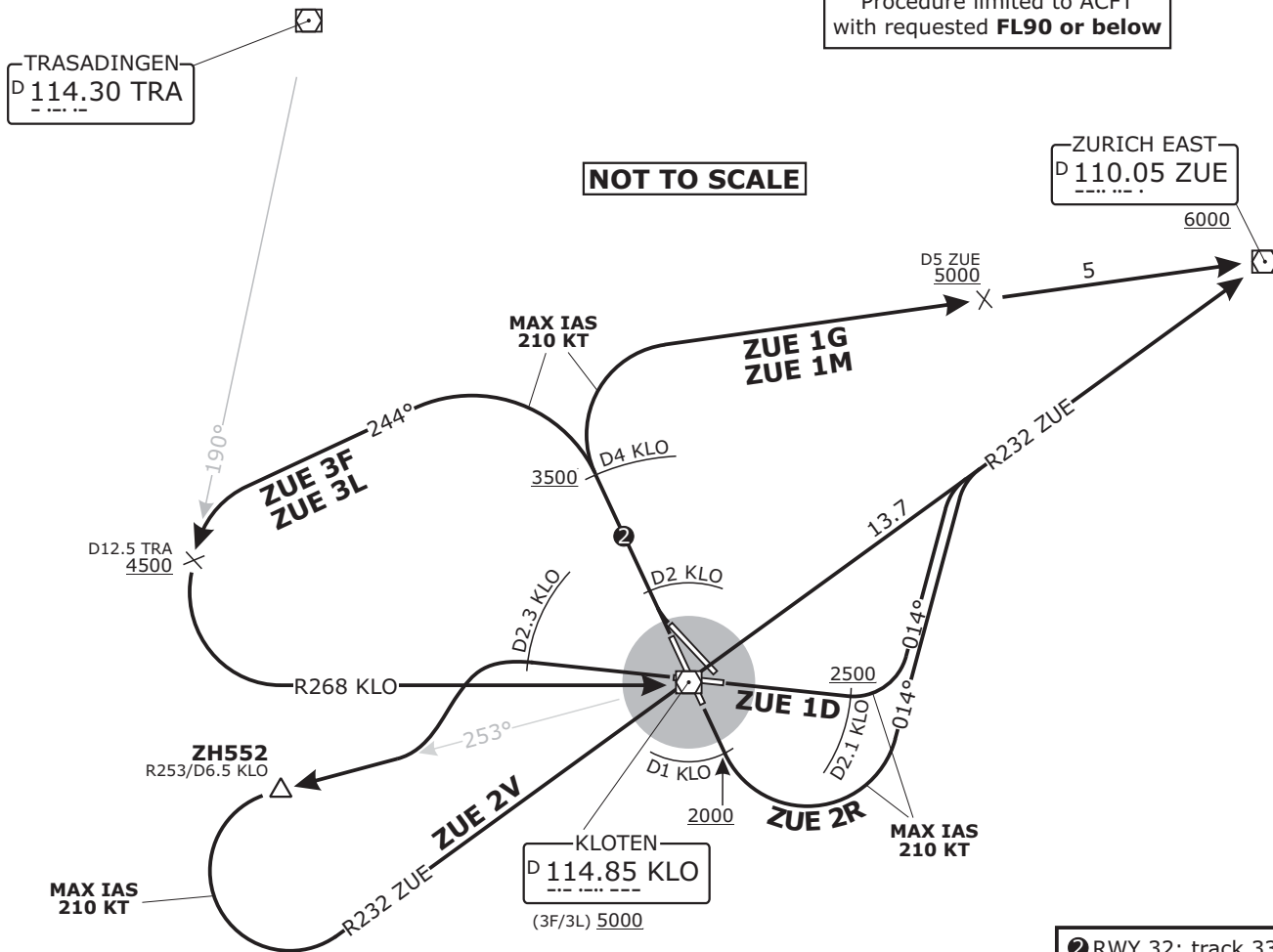


ZURICH EAST
NON-RNAV DEPARTURES
RWYS 10, 16, 28, 32, 34

FOR ROUTE CONTINUATION AFTER ZUE
REFER TO DEPARTURE AREA CHART NO.1

SPEED RESTRICTION
MAX IAS 250 KT below FL100

Procedure limited to ACFT
with requested **FL90 or below**



NOT TO SCALE

DISTANCES IN NM
ALTITUDES IN FT

Altitude and speed restrictions see graphical chart

Initial climb clearance 5000

SID	RWY	ROUTING
ZUE 1D	10	Climb straight ahead. At 2500 but not before D2.1 KLO turn LEFT onto track 014°, intercept R232 to ZUE. Proceed to ZUE.
ZUE 3F	34	Climb on track 333°. At D4 KLO turn LEFT onto track 244°, intercept R190 from TRA. On R190 from TRA intercept R268 to KLO. At KLO intercept R232 to ZUE. Proceed to ZUE.
ZUE 1G		Climb on track 333°. At D4 KLO turn RIGHT and proceed to ZUE.
ZUE 3L	32	Climb straight ahead. At D2 KLO turn RIGHT onto track 330°. At D4 KLO turn LEFT onto track 244°, intercept R190 from TRA. On R190 from TRA intercept R268 to KLO. At KLO intercept R232 to ZUE. Proceed to ZUE.
ZUE 1M		Climb straight ahead. At D2 KLO turn RIGHT onto track 330°. At D4 KLO turn RIGHT and proceed to ZUE.
ZUE 2R	16	Climb straight ahead. At 2000 but not before D1 KLO turn LEFT onto track 014°, intercept R232 from ZUE. Proceed to ZUE.
ZUE 2V	28	Climb straight ahead. At D2.3 KLO turn LEFT, intercept R253 from KLO. At ZH552/D6.5 KLO or when instructed by ATC, turn LEFT, intercept R232 from ZUE. Proceed to ZUE.

② RWY 32: track 330°
RWY 34: track 333°

Valid for flight simulation use only - do not use for real life navigation

CHANGES: Editorial, RFL Remark