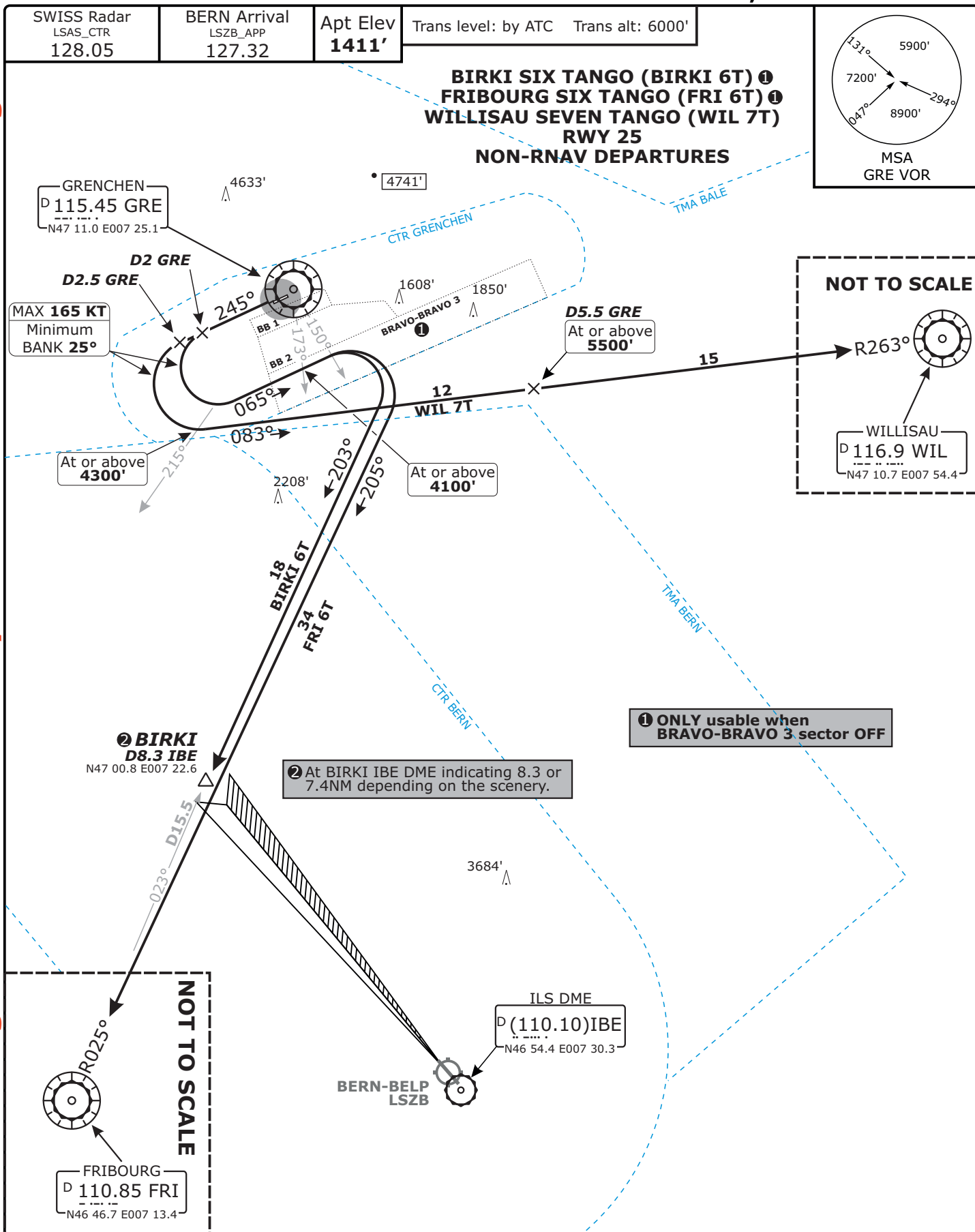


Valid for flight simulation use only - do not use for real life navigation



SID	ROUTING	INITIAL CLIMB CLEARANCE
BIRKI 6T ①	Intercept GRE R-245, at D2 GRE, turn LEFT (MAX IAS 165 KT, MIN bank 25°), 065° track, when passing GRE R-150 turn RIGHT, intercept FRI R-023, proceed to BIRKI.	5000'
FRI 6T ①	Intercept GRE R-245, at D2 GRE, turn LEFT (MAX IAS 165 KT, MIN bank 25°), 065° track, when passing GRE R-150 turn RIGHT, intercept FRI R-025, proceed to FRI.	5000'
WIL 7T	Intercept GRE R-245, at D2.5 GRE, turn LEFT (MAX IAS 165 KT, MIN bank 25°), intercept WIL R-263, proceed to WIL.	6000'

CHANGES: SID revised, airspace structure, BB sectors.