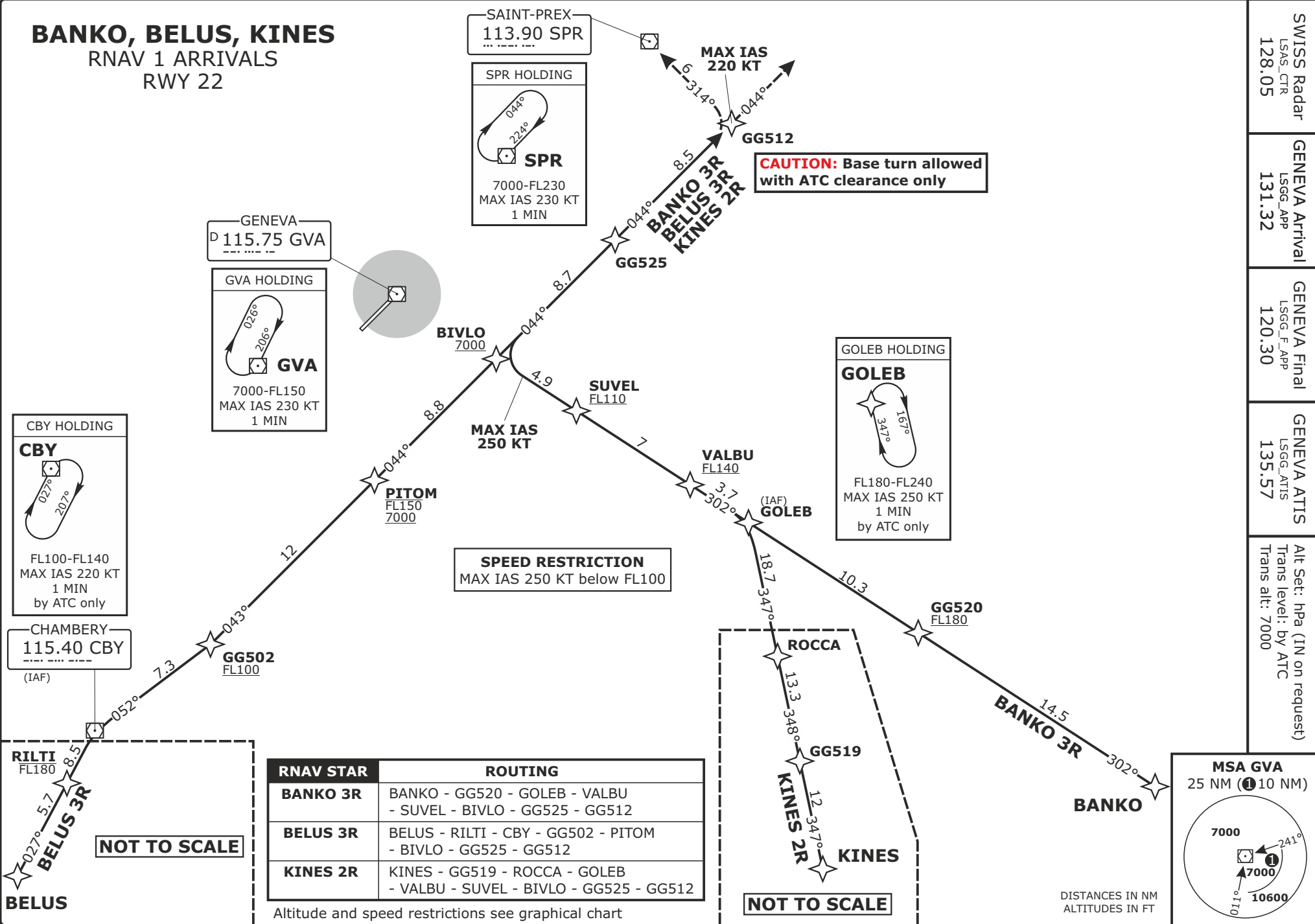


BANKO, BELUS, KINES
RNAV 1 ARRIVALS
RWY 22



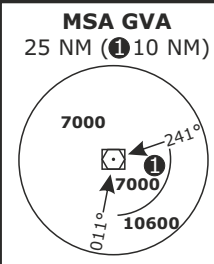
RNAV STAR	ROUTING
BANKO 3R	BANKO - GG520 - GOLEB - VALBU - SUVEL - BIVLO - GG525 - GG512
BELUS 3R	BELUS - RILTI - CBY - GG502 - PITOM - BIVLO - GG525 - GG512
KINES 2R	KINES - GG519 - ROCCA - GOLEB - VALBU - SUVEL - BIVLO - GG525 - GG512

Altitude and speed restrictions see graphical chart

NOT TO SCALE

CAUTION: Base turn allowed with ATC clearance only

SPEED RESTRICTION
MAX IAS 250 KT below FL100



DISTANCES IN NM
ALTITUDES IN FT

SWISS Radar LSAS_CTR 128.05	GENEVA Arrival LSGG_APP 131.32	GENEVA Final LSGG_F_APP 120.30	GENEVA ATIS LSGG_ATIS 135.57	Alt Set: hPa (IN on request) Trans level: by ATC Trans alt: 7000
-----------------------------------	--------------------------------------	--------------------------------------	------------------------------------	--