

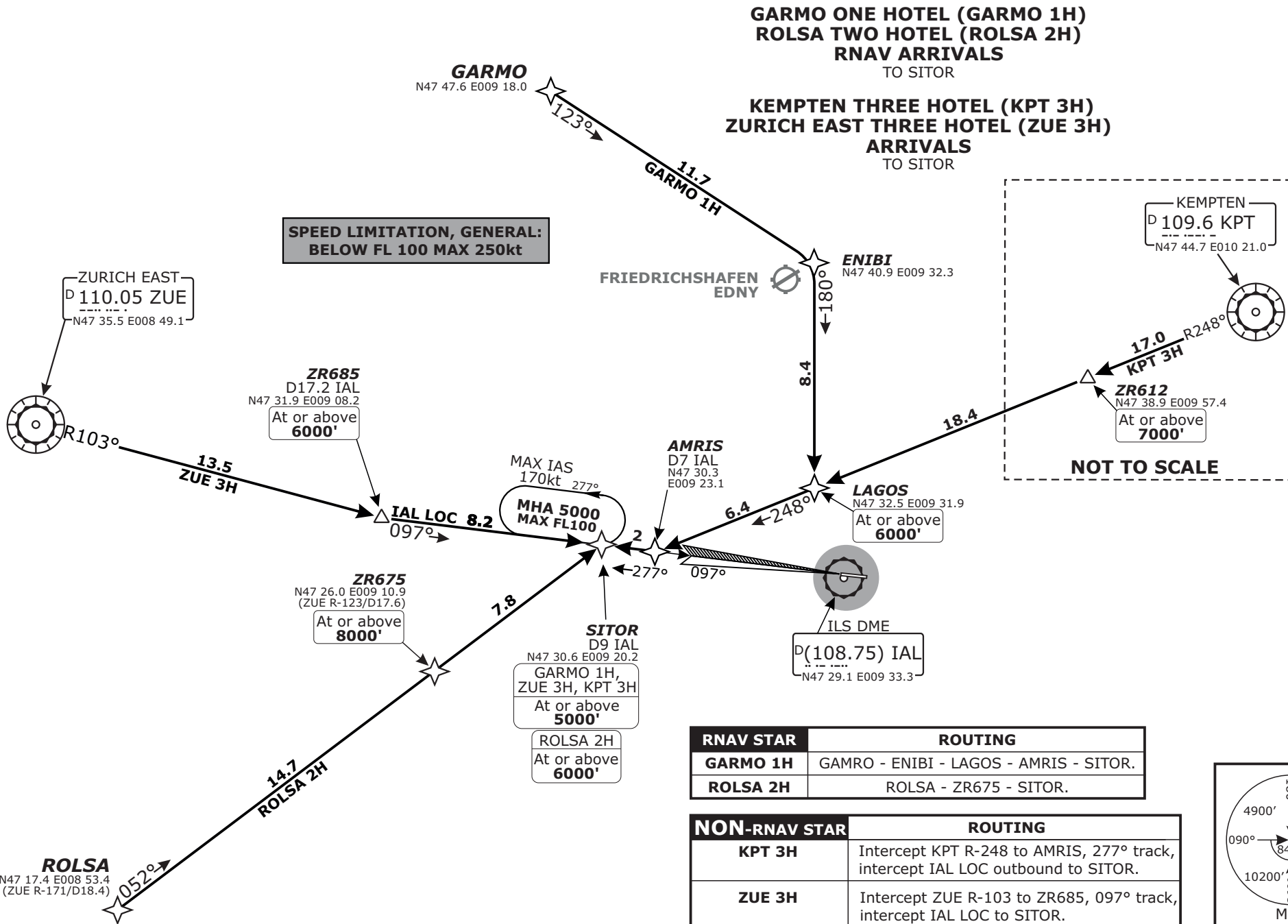
Valid for flight simulation use only - do not use for real life navigation

CHANGES: ARR frequency.

© VAACC Switzerland

http://www.vacc.ch/

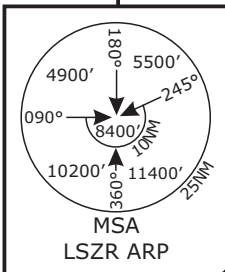
charts@vacc.ch



Swiss Radar LSAS_CTR 128.05	ZURICH Arrival LSZH_APP 131.15	ZURICH Arrival LSZH_A_APP 119.92	Apt Elev 1306'	Alt Set: hPa (IN on request) Trans level: by ATC Trans alt: 5000'
-----------------------------------	--------------------------------------	--	--------------------------	---

RNAV STAR	ROUTING
GARMO 1H	GAMRO - ENIBI - LAGOS - AMRIS - SITOR.
ROLSA 2H	ROLSA - ZR675 - SITOR.

NON-RNAV STAR	ROUTING
KPT 3H	Intercept KPT R-248 to AMRIS, 277° track, intercept IAL LOC outbound to SITOR.
ZUE 3H	Intercept ZUE R-103 to ZR685, 097° track, intercept IAL LOC to SITOR.



LSZR/ACH ALTENRHEIN
STAR CHART NO. 1
Revision 11 FEB 12
ST. GALLEN, SWITZERLAND
RNAV and NON-RNAV STAR