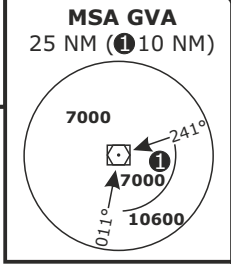
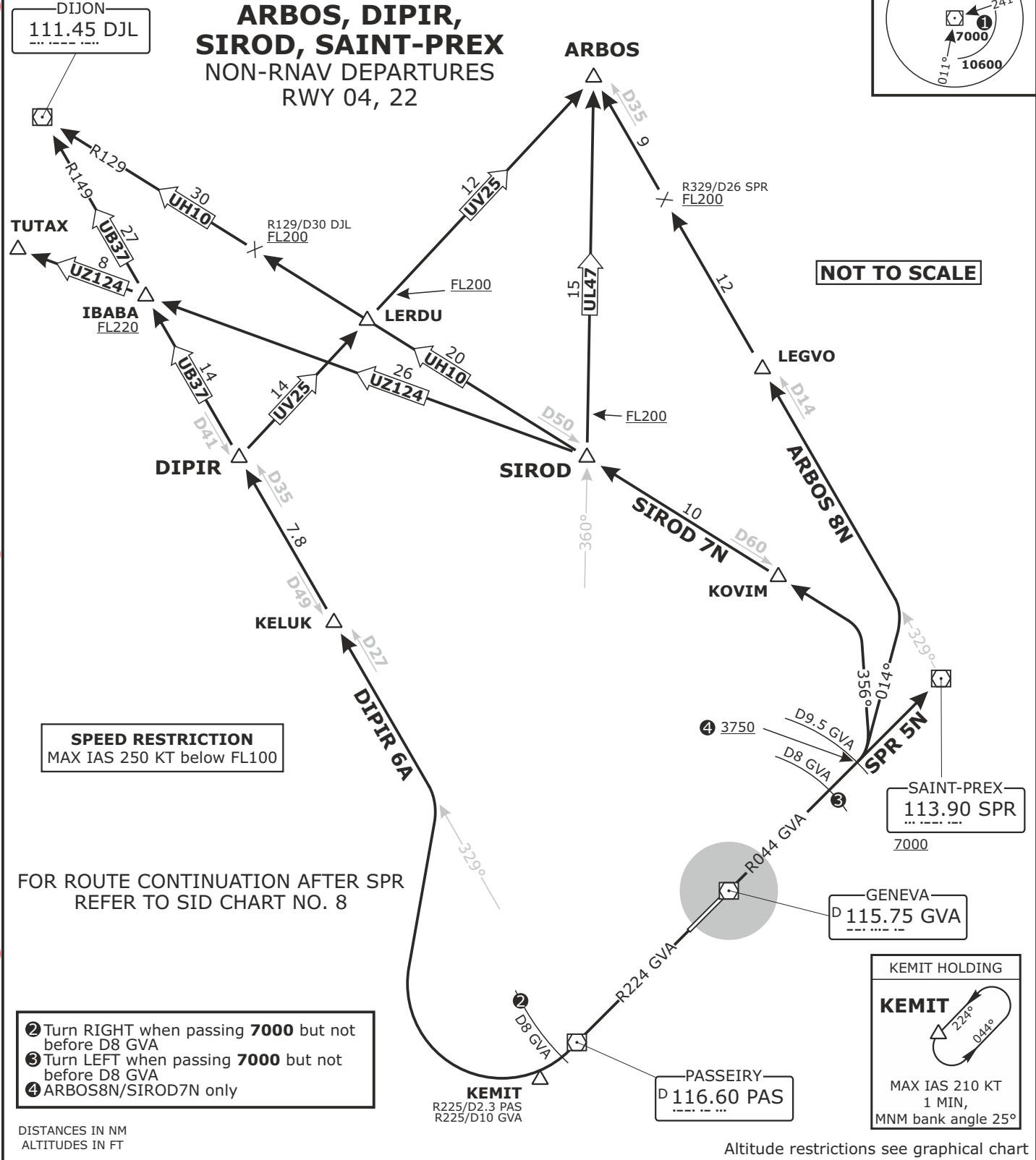


Valid for flight simulation use only - do not use for real life navigation

SWISS Radar LSAS_CTR 128.05	GENEVA Arrival LSGG_APP 131.32	GENEVA Departure LSGG_DEP 119.52	Apt Elev 1411	Alt Set: hPa (IN on request) Trans level: by ATC Trans alt: 7000
-----------------------------------	--------------------------------------	--	-------------------------	--



ARBOS, DIPIR, SIROD, SAINT-PREX
NON-RNAV DEPARTURES
RWY 04, 22



SPEED RESTRICTION
MAX IAS 250 KT below FL100

FOR ROUTE CONTINUATION AFTER SPR
REFER TO SID CHART NO. 8

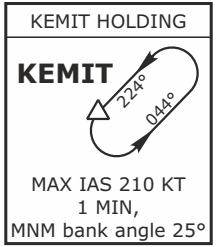
- ② Turn RIGHT when passing 7000 but not before D8 GVA
- ③ Turn LEFT when passing 7000 but not before D8 GVA
- ④ ARBOS8N/SIROD7N only

DISTANCES IN NM
ALTITUDES IN FT

Altitude restrictions see graphical chart

Initial climb clearance FL90

SID	RWY	ROUTING
ARBOS 8N	04	Climb on R044 GVA. When passing 7000 but not before D8 GVA, turn LEFT onto track 014°. Intercept R329 from SPR. Proceed via LEGVO to ARBOS.
DIPIR 6A	22	Climb on R224 GVA. When passing 7000 but not before D8 GVA, turn RIGHT to intercept R329 from PAS (R149 to DJL). Proceed via KELUK to DIPIR.
SIROD 7N	04	Climb on R044 GVA. When passing 7000 but not before D8 GVA, turn LEFT onto track 356°. Intercept R129 to DJL. Proceed via KOVIM to SIROD.
SPR 5N		Climb on R044 GVA. Proceed to SPR.



CHANGES: UH10