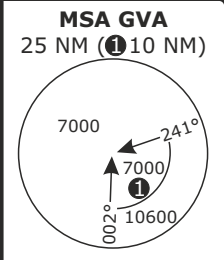


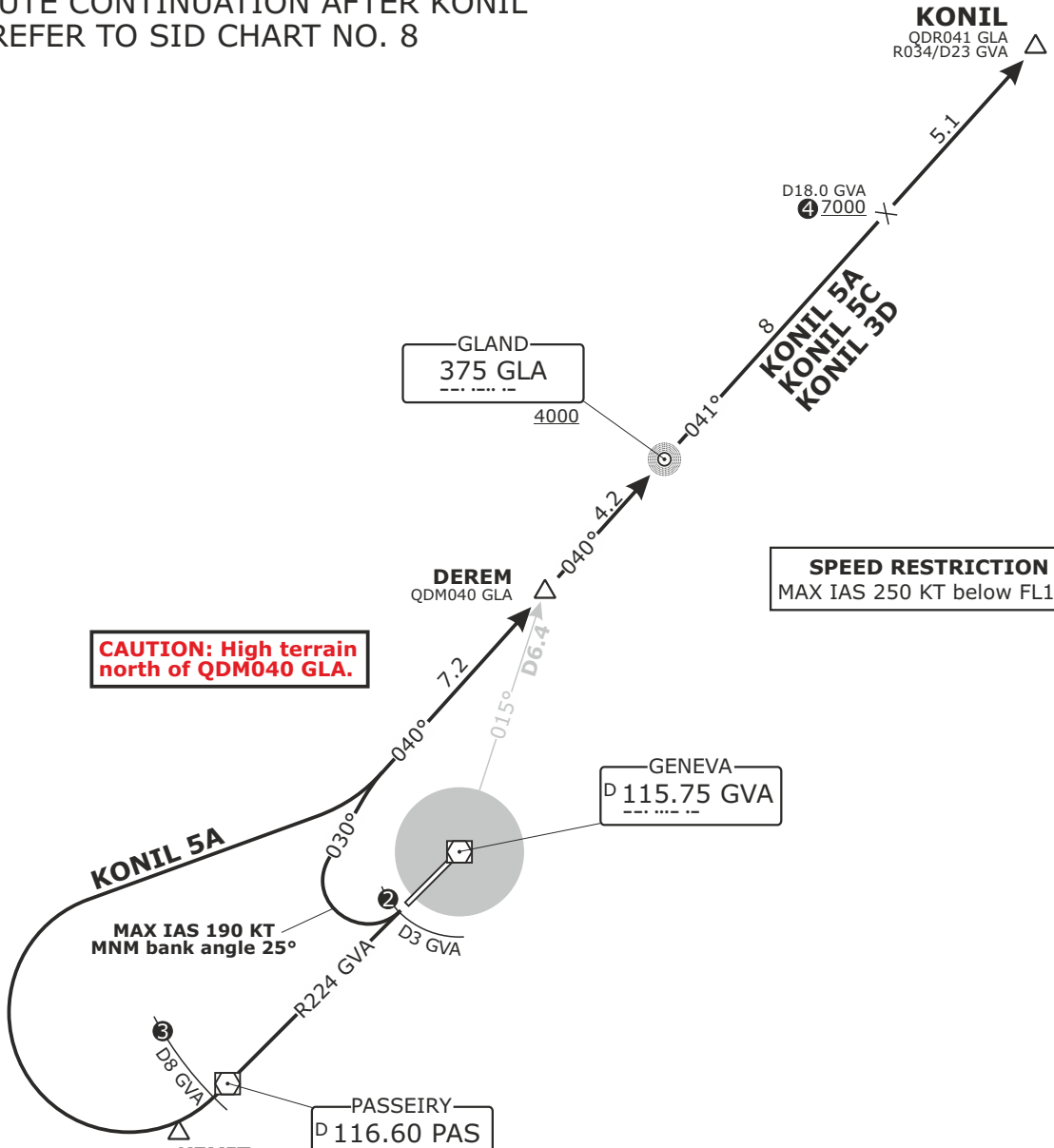
Valid for flight simulation use only - do not use for real life navigation

SWISS Radar LSAS_CTR 128.05	GENEVA Arrival LSGG_APP 131.32	GENEVA Departure LSGG_DEP 119.52	Apt Elev 1411	Alt Set: hPa (IN on request) Trans level: by ATC Trans alt: 7000
-----------------------------------	--------------------------------------	--	-------------------------	--



KONIL
NON-RNAV DEPARTURES
RWY 22

FOR ROUTE CONTINUATION AFTER KONIL
REFER TO SID CHART NO. 8



CAUTION: High terrain north of QDM040 GLA.

SPEED RESTRICTION
MAX IAS 250 KT below FL100



- ② KONIL 5C/3D: Turn RIGHT when passing **1900** but not before D3 GVA
- ③ Turn RIGHT when passing **7000** but not before D8 GVA
- ④ KONIL 5C/3D only

DISTANCES IN NM
ALTITUDES IN FT

Altitude and speed restrictions see graphical chart

SID	RWY	Initial climb	ROUTING
KONIL 5A	22	FL90	Climb on R224 GVA. When passing 7000 but not before D8 GVA, turn RIGHT to intercept QDM040 GLA. Proceed via DEREM to GLA. Continue on QDR041 GLA to KONIL.
KONIL 5C		FL90	Climb on R224 GVA. When passing 1900 but not before D3 GVA, turn RIGHT onto track 030°. Intercept QDM040 GLA. Proceed via DEREM to GLA. Continue on QDR041 GLA to KONIL.
KONIL 3D		7000	Climb on R224 GVA. When passing 1900 but not before D3 GVA, turn RIGHT onto track 030°. Intercept QDM040 GLA. Proceed via DEREM to GLA. Continue on QDR041 GLA to KONIL.

CHANGES: RWY designator, variation, editorial