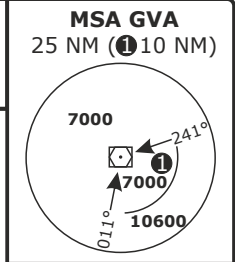


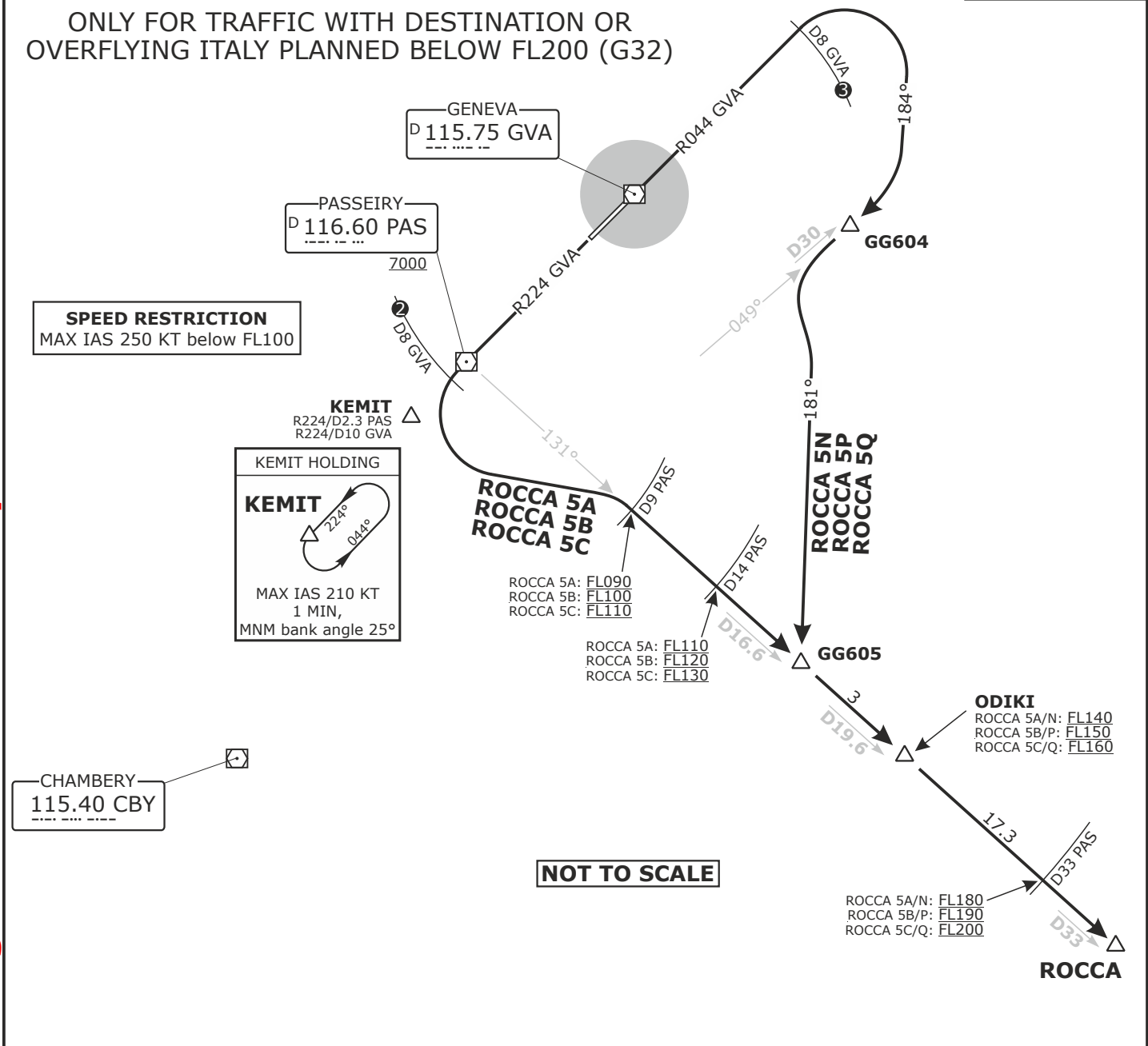
Valid for flight simulation use only - do not use for real life navigation

SWISS Radar LSAS_CTR 128.05	GENEVA Arrival LSGG_APP 131.32	GENEVA Departure LSGG_DEP 119.52	Apt Elev 1411	Alt Set: hPa (IN on request) Trans level: by ATC Trans alt: 7000
-----------------------------------	--------------------------------------	--	-------------------------	--



ROCCA
NON-RNAV DEPARTURES
RWY 04, 22

ONLY FOR TRAFFIC WITH DESTINATION OR
OVERFLYING ITALY PLANNED BELOW FL200 (G32)



- ② Turn LEFT when passing 7000 but not before D8 GVA
- ③ Turn RIGHT when passing 5000 but not before D8 GVA

DISTANCES IN NM
ALTITUDES IN FT

Altitude and speed restrictions see graphical chart

Initial climb clearance FL90

SID	RWY	ROUTING
ROCCA 5A/B/C	22	Climb on R224 GVA. When passing 7000 but not before D8 GVA, turn LEFT. Intercept R131 from PAS. Proceed via ODIKI to ROCCA.
ROCCA 5N/P/Q	04	Climb on R044 GVA. When passing 5000 but not before D8 GVA, turn RIGHT onto track 184°. Intercept R049 to CBY. At GG604 turn LEFT onto track 181°. Intercept R131 from PAS. Proceed via GG605 and ODIKI to ROCCA.