

Valid for flight simulation use only - do not use for real life navigation

CHANGES: ARR frequency.

© VAACC Switzerland

http://www.vaacc.ch/

charts@vaacc.ch

Swiss Radar
LSAS_CTR
128.05

ZURICH Arrival
LSZH_APP
131.15

ZURICH Arrival
LSZH_A_APP
119.92

Apt Elev
1306'

Alt Set: hPa (IN on request)
Trans level: by ATC
Trans alt: 5000'

**AMIKI TWO NOVEMBER (AMIKI 2N)
AMIKI TWO VICTOR (AMIKI 2V)
KEMPTEN THREE NOVEMBER (KPT 3N)
KEMPTEN THREE VICTOR (KPT 3V)
SITOR TWO NOVEMBER (SITOR 2N)
SITOR TWO VICTOR (SITOR 2V)
RWYS 10, 28
NON-RNAV DEPARTURES**

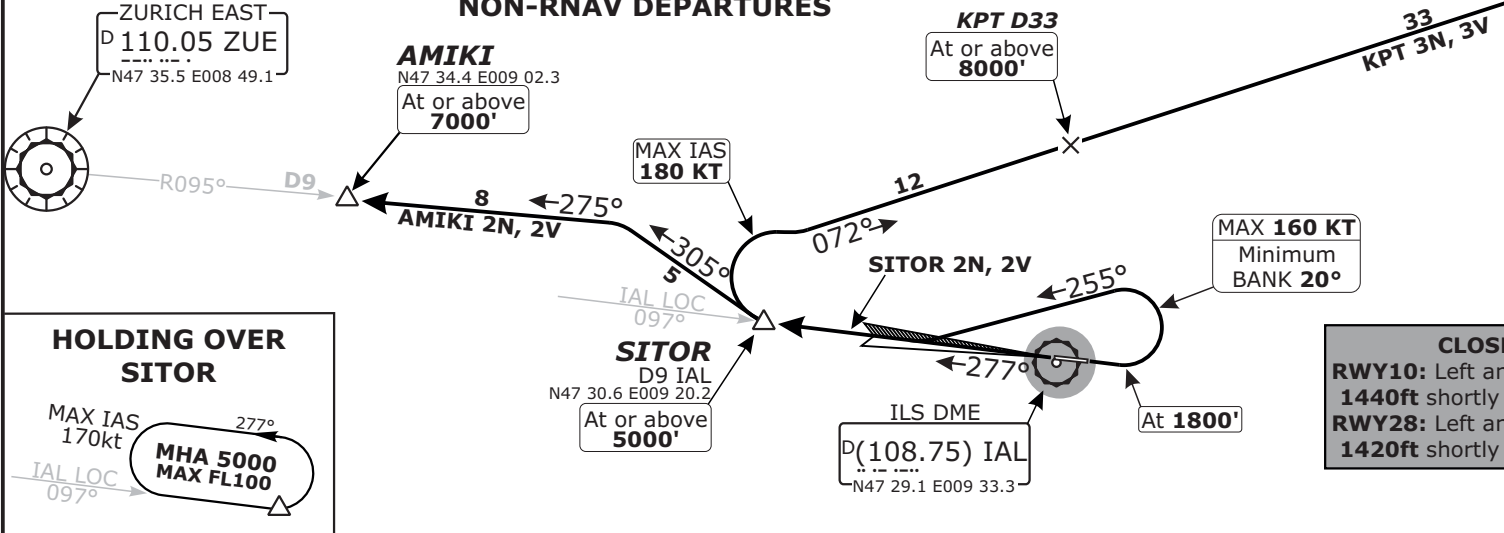
**SPEED LIMITATION, GENERAL:
BELOW FL 100 MAX 250kt**

**NOTE: Procedures for ACFT
speed CAT A to C.**

KEMPTEN
D 109.6 KPT
N47 44.7 E010 21.0



NOT TO SCALE



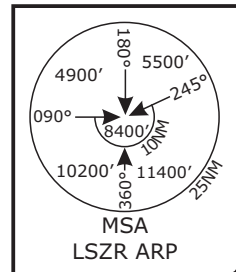
**HOLDING OVER
SITOR**

MAX IAS
170kt
MHA 5000
MAX FL100

CLOSE-IN OBST
RWY10: Left and right of track up to 1440ft shortly after end of RWY10.
RWY28: Left and right of track up to 1420ft shortly after end of RWY28.

Initial climb clearance 5000'

SID	RWY	ROUTING
AMIKI 2N	10	Climb straight ahead. At 1800' turn LEFT (MAX IAS 160KT, MIM bank 20°), 255° track, intercept IAL LOC outbound to SITOR. At SITOR turn RIGH, 305° track, intercept ZUE R-095 inbound to AMIKI.
AMIKI 2V	28	Climb straight ahead. Use IAL LOC outbound for track guidance. At SITOR turn RIGH, 305° track, intercept ZUE R-095 inbound to AMIKI.
KPT 3N	10	Climb straight ahead. At 1800' turn LEFT (MAX IAS 160KT, MIM bank 20°), 255° track, intercept IAL LOC outbound to SITOR. At SITOR turn RIGHT (MAX IAS 180KT), intercept KPT R-252 inbound to KPT.
KPT 3V	28	Climb straight ahead. Use IAL LOC outbound for track guidance. At SITOR turn RIGHT (MAX IAS 180KT), intercept KPT R-252 inbound to KPT.
SITOR 2N	10	Climb straight ahead. At 1800' turn LEFT (MAX IAS 160KT, MIM bank 20°), 255° track, intercept IAL LOC outbound to SITOR. Enter Holding at SITOR.
SITOR 2V	28	Climb straight ahead. Use IAL LOC outbound for track guidance, proceed to SITOR. Enter Holding at SITOR.



LSZR/ACH ALTENRHEIN
SID CHART NO.3
Revision 11 FEB 12
ST. GALLEN, SWITZERLAND
NON-RNAV SID