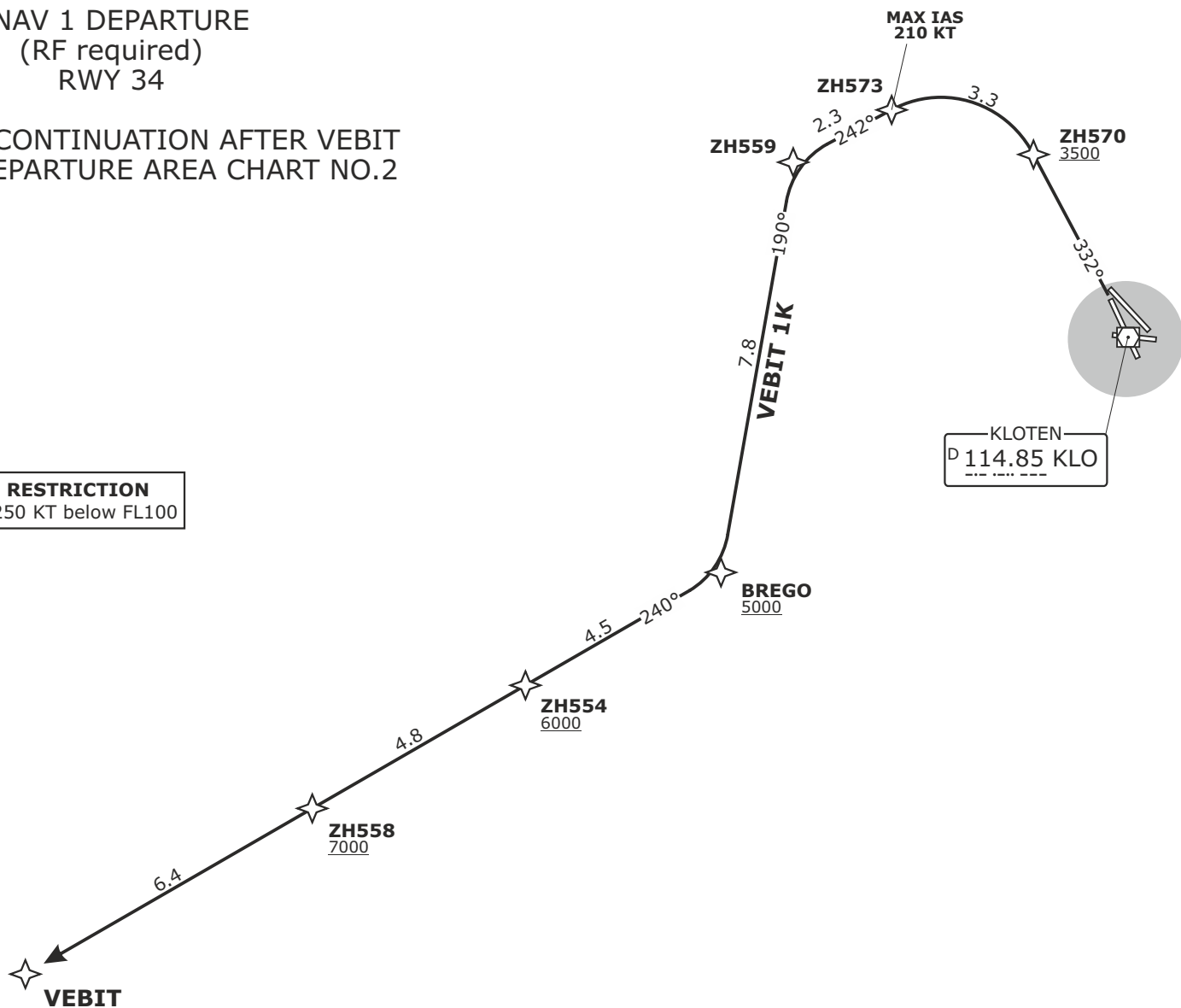


Valid for flight simulation use only - do not use for real life navigation

VEBIT
RNAV 1 DEPARTURE
(RF required)
RWY 34

FOR ROUTE CONTINUATION AFTER VEBIT
REFER TO DEPARTURE AREA CHART NO.2

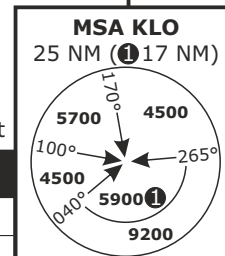
SPEED RESTRICTION
MAX IAS 250 KT below FL100



Initial climb clearance **5000**

SID	RWY	ROUTING
VEBIT 1K	34	Climb on track 332°. Proceed via ZH570, ZH573, ZH559, BREGO, ZH554 and ZH558 to VEBIT.

DISTANCES IN NM
ALTITUDES IN FT



SWISS Radar LSAS_CTR 128.05	ZURICH AP LSZH_APP 135.22	ZURICH Arrival LSZH_W_APP 118.00	ZURICH Departure LSZH_DEP 125.95	Apt Elev 1417	Alt Set: hPa (IN on request) Trans level: by ATC Trans alt: 7000
-----------------------------------	---------------------------------	--	--	-------------------------	--

LSZH/ZRH
ZURICH, SWITZERLAND
SID CHART NO.2
Revision 03 DEC 20

RNAV 1 (RF)
VEBIT