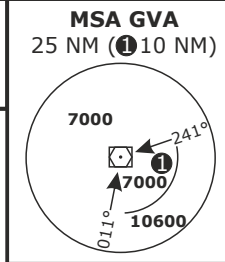
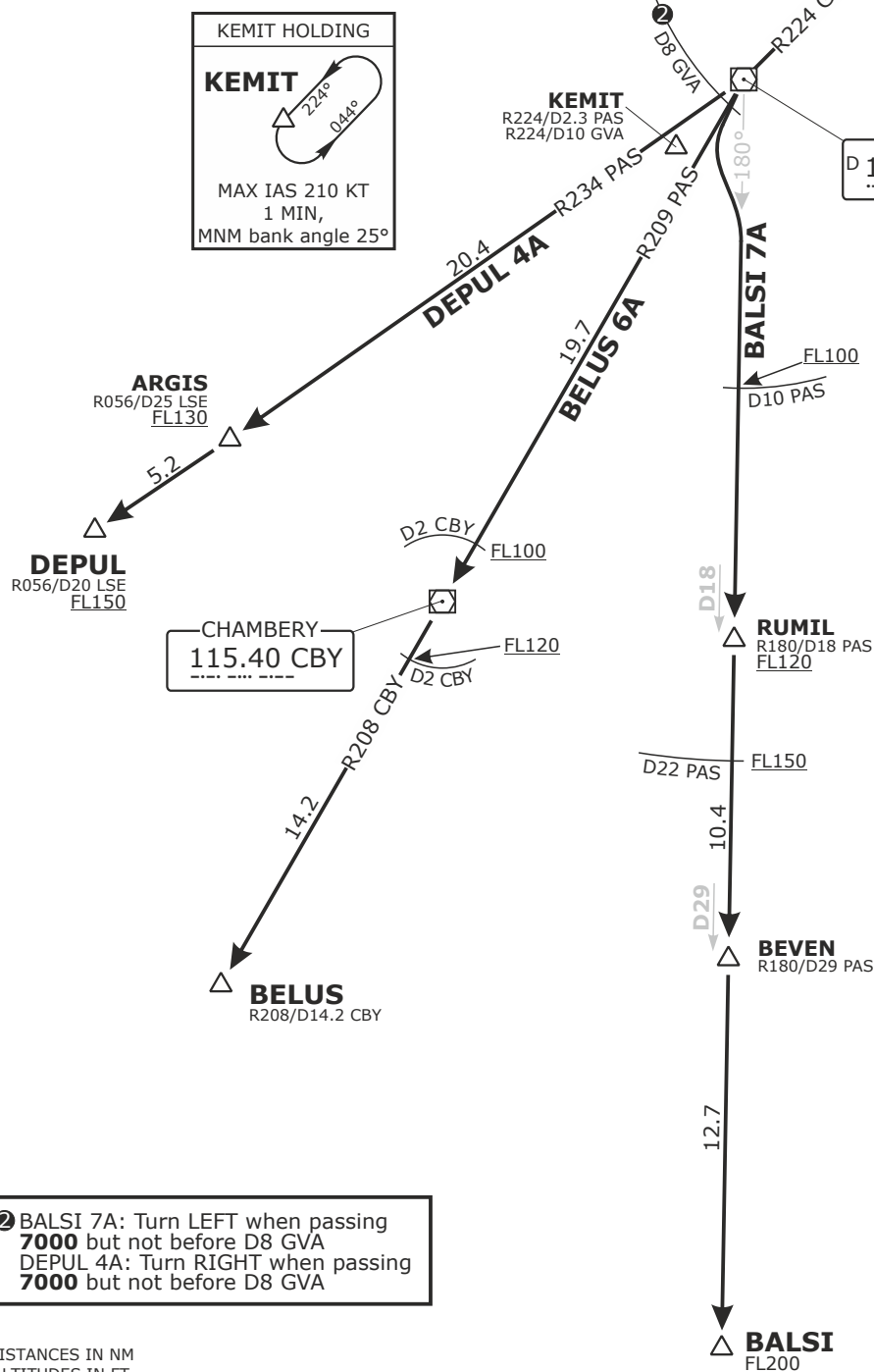


Valid for flight simulation use only - do not use for real life navigation

SWISS Radar LSAS_CTR 128.05	GENEVA Arrival LSGG_APP 131.32	GENEVA Departure LSGG_DEP 119.52	Apt Elev 1411	Alt Set: hPa (IN on request) Trans level: by ATC Trans alt: 7000
-----------------------------------	--------------------------------------	--	-------------------------	--



BALSI, BELUS, DEPUL
NON-RNAV DEPARTURES
RWY 22



② BALSI 7A: Turn LEFT when passing 7000 but not before D8 GVA
DEPUL 4A: Turn RIGHT when passing 7000 but not before D8 GVA

DISTANCES IN NM
ALTITUDES IN FT

Altitude and speed restrictions see graphical chart

Initial climb clearance FL90

SID	RWY	ROUTING
BALSI 7A	22	Climb on R224 GVA. When passing 7000 but not before D8 GVA, turn LEFT. Intercept R180 from PAS. Proceed via RUMIL and BEVEN to BALSI.
BELUS 6A		Climb on R224 GVA. At D8 GVA, turn LEFT. Intercept R209 from PAS to CBY. Proceed on R208 from CBY to BELUS.
DEPUL 4A		Climb on R224 GVA. When passing 7000 but not before D8 GVA, turn RIGHT. Intercept R234 from PAS. Proceed via ARGIS to DEPUL.