

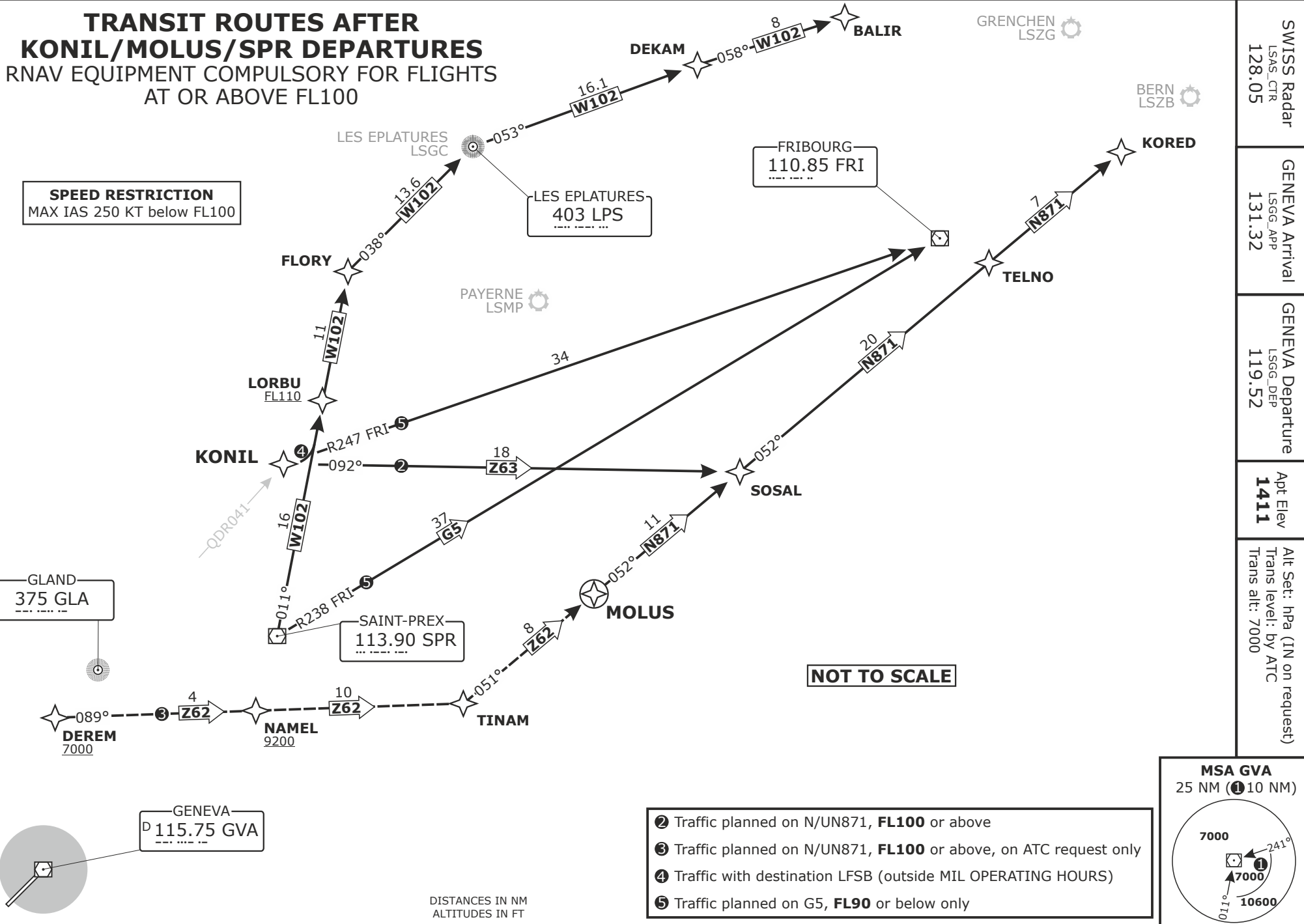
TRANSIT ROUTES AFTER KONIL/MOLUS/SPR DEPARTURES

RNAV EQUIPMENT COMPULSORY FOR FLIGHTS AT OR ABOVE FL100

SPEED RESTRICTION
MAX IAS 250 KT below FL100

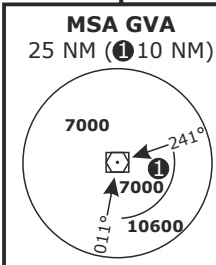
GLAND
375 GLA

GENEVA
D 115.75 GVA



NOT TO SCALE

- ② Traffic planned on N/UN871, **FL100** or above
- ③ Traffic planned on N/UN871, **FL100** or above, on ATC request only
- ④ Traffic with destination LFSB (outside MIL OPERATING HOURS)
- ⑤ Traffic planned on G5, **FL90** or below only



LSGG/GVA
GENEVA, SWITZERLAND

SID CHART NO.8
Revision 25 APR 19

TRANSIT ROUTES
KONIL/MOLUS/SPR

| | | | | |
|-----------------------------------|--------------------------------------|--|-------------------------|---|
| SWISS Radar LSAS_CTR 128.05 | GENEVA Arrival LSGG_APP 131.32 | GENEVA Departure LSGG_DEP 119.52 | Apt Elev 1411 | Alt Set: hPa (IN on request) Trans alt: 7000 |
|-----------------------------------|--------------------------------------|--|-------------------------|---|