

CHANGES: URNAS 2Z withdrawn,
HLDG GIPOL

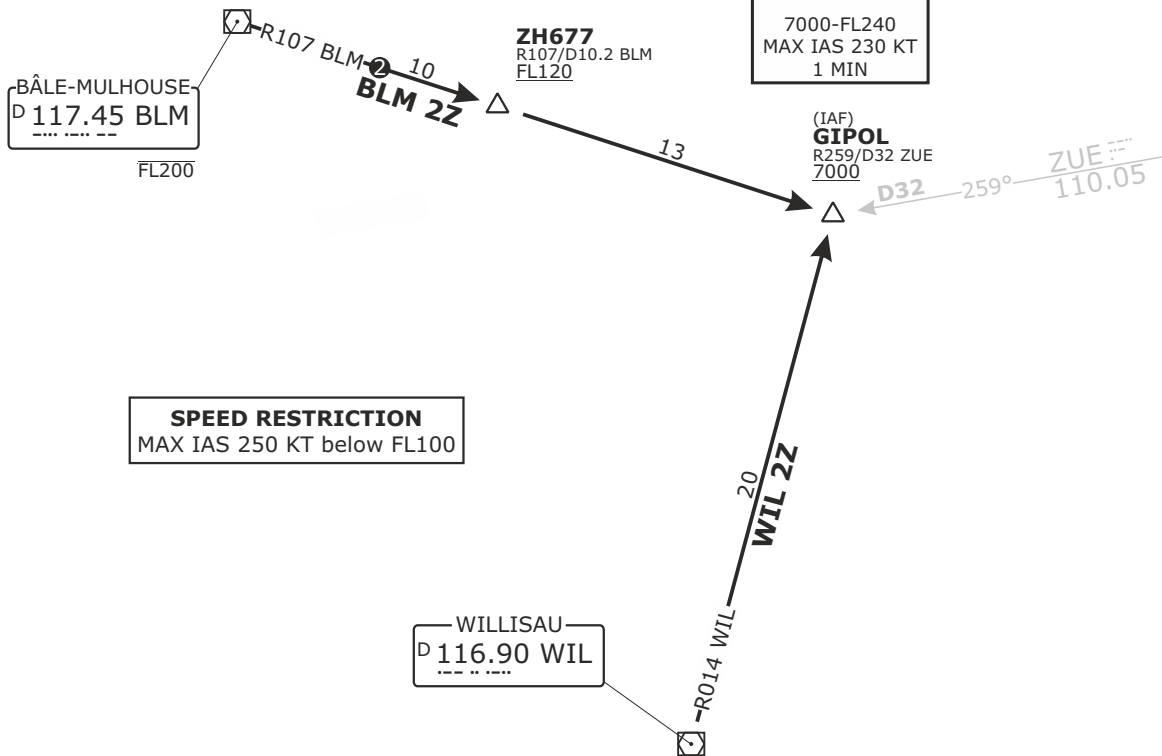
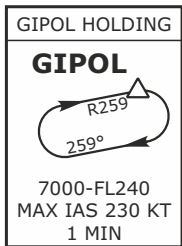
Valid for flight simulation use only - do not use for real life navigation

© VAACC Switzerland

www.vaacc.ch

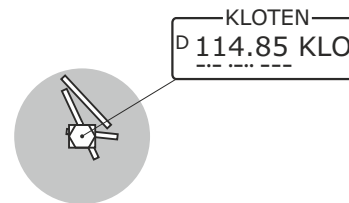
charts@vaacc.ch

② For the purpose of descent planning expect to cross 13 NM to BLM above **FL190**, BLM between **FL200** and **FL150**, ZH677 at **FL120** or above



SPEED RESTRICTION
 MAX IAS 250 KT below FL100

BÂLE-MULHOUSE, WILLISAU NON-RNAV ARRIVALS TO GIPOL HOLDING

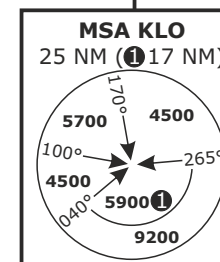


SWISS Radar LSAS_CTR 128.05	ZURICH App LSZH_APP 135.22	ZURICH Arrival LSZH_W_APP 118.00	ZURICH Final LSZH_F_APP 125.32	ZURICH ATIS LSZH_ATIS 125.72	Alt Set: hPa (IN on request) Trans level: by ATC Trans alt: 7000
-----------------------------------	----------------------------------	--	--------------------------------------	------------------------------------	--

LSZH/ZRH
ZURICH, SWITZERLAND

STAR CHART NO.3
 Revision 03 DEC 20

SOUTH/WEST
NON-RNAV



Altitude restrictions see graphical chart

NON-RNAV STAR	ROUTING
BLM 2Z ②	BLM - R107 BLM - GIPOL
WIL 2Z	WIL - R014 WIL - GIPOL

DISTANCES IN NM
 ALTITUDES IN FT