

LSGG/GVA

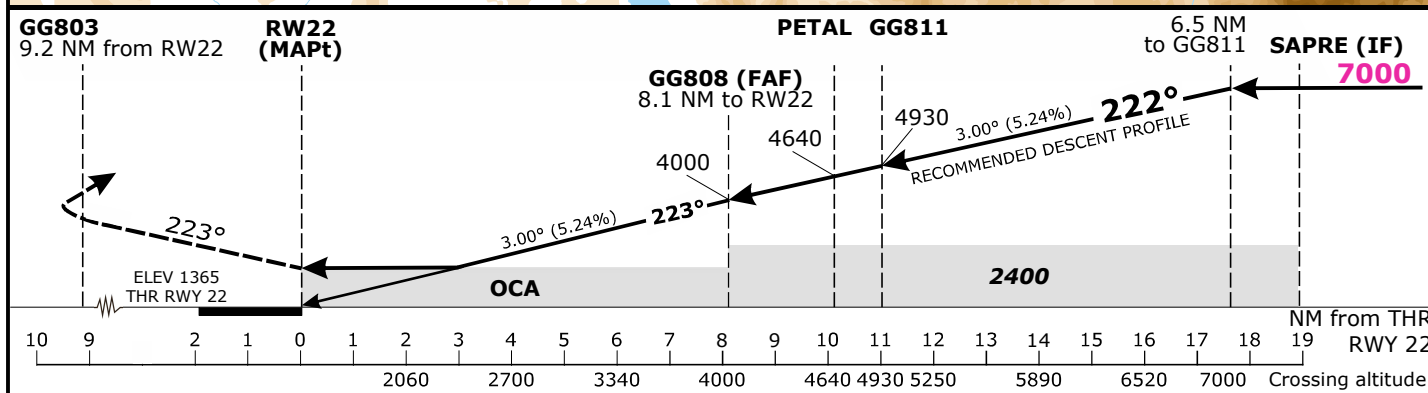
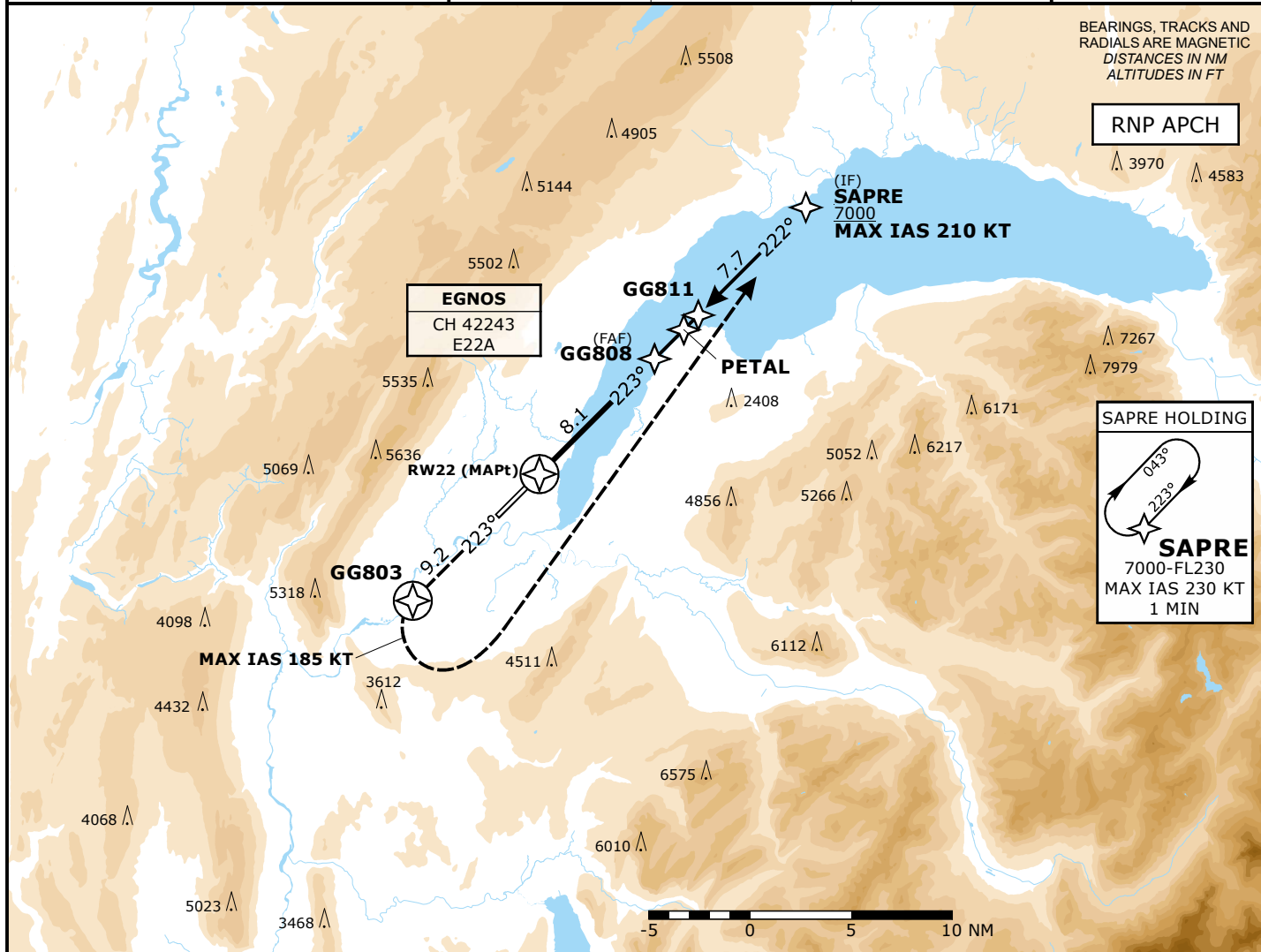
GENEVA, SWITZERLAND

APCH CHART NO. 04
Revision 31 OCT 24

RNP
RWY 22

Valid for flight simulation use only - do not use for real life navigation

Frequencies		Missed Approach		MSA LSGG ARP	
Swiss Radar	135.015 134.850	Climb to 7000 . Climb on track 223° to GG803. Turn LEFT (MAX IAS 185 KT during turn) and proceed to SAPRE.		Outer Circle: 25 NM Inner Circle: 10 NM	
Geneva Arrival	124.225 128.905				
Geneva Final	136.255 -				
Geneva Tower	120.305 -				
Geneva Apron	118.700 -				
Geneva ATIS	121.855 -				
Geneva ATIS		135.580 -	AD ELEV 1411ft	TRANS LVL by ATC	TRANS ALT 7000



Minima					
	CAT A	CAT B	CAT C	CAT D	RVR
MDA (H) LNAV	1870 (505)				1600m
DA (H) LNAV/VNAV	1706 (341)	1715 (350)	1731 (366)	1762 (397)	900m
DA (H) LPV CAT I	1565 (200)				550m

Changes: Completely revised