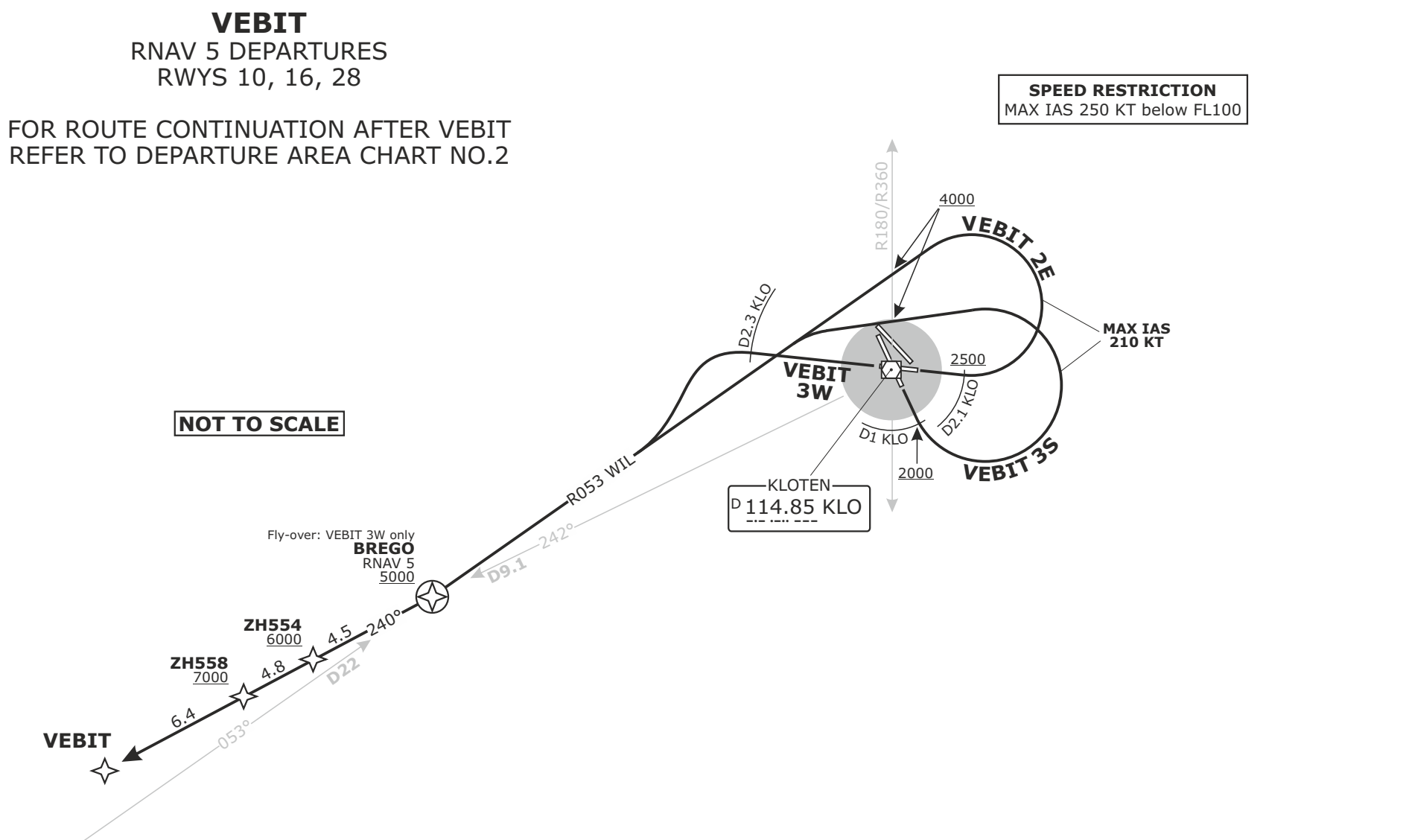


SWISS Radar LSAS_CTR 128.05	ZURICH App LSZH_APP 135.22	ZURICH Arrival LSZH_W_APP 118.00	ZURICH Departure LSZH_DEP 125.95	Apt Elev 1417	Alt Set: hPa (IN on request) Trans level: by ATC Trans alt: 7000
-----------------------------------	----------------------------------	--	--	-------------------------	--

SPEED RESTRICTION
MAX IAS 250 KT below FL100

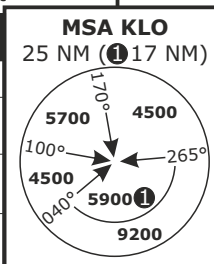
MAX IAS
210 KT



Altitude and speed restrictions see graphical chart

Initial climb clearance 5000

SID	RWY	ROUTING
VEBIT 2E	10	Climb straight ahead. At 2500 but not before D2.1 KLO turn LEFT, intercept R053 to WIL. Proceed via BREGO, ZH554 and ZH558 to VEBIT.
VEBIT 3S	16	Climb straight ahead. At 2000 but not before D1 KLO turn LEFT, intercept R053 to WIL. Proceed via BREGO, ZH554 and ZH558 to VEBIT.
VEBIT 3W	28	Climb straight ahead. At D2.3 KLO turn LEFT, intercept R053 to WIL. Proceed via BREGO, ZH554 and ZH558 to VEBIT.



VEBIT
RNAV 5 DEPARTURES
RWYS 10, 16, 28

FOR ROUTE CONTINUATION AFTER VEBIT
REFER TO DEPARTURE AREA CHART NO.2

NOT TO SCALE

WILLISAU
D 116.90 WIL

DISTANCES IN NM
ALTITUDES IN FT