

LSZH/ZRH

ZURICH, SWITZERLAND

APCH CHART NO. 28-4
Revision 25 JAN 24

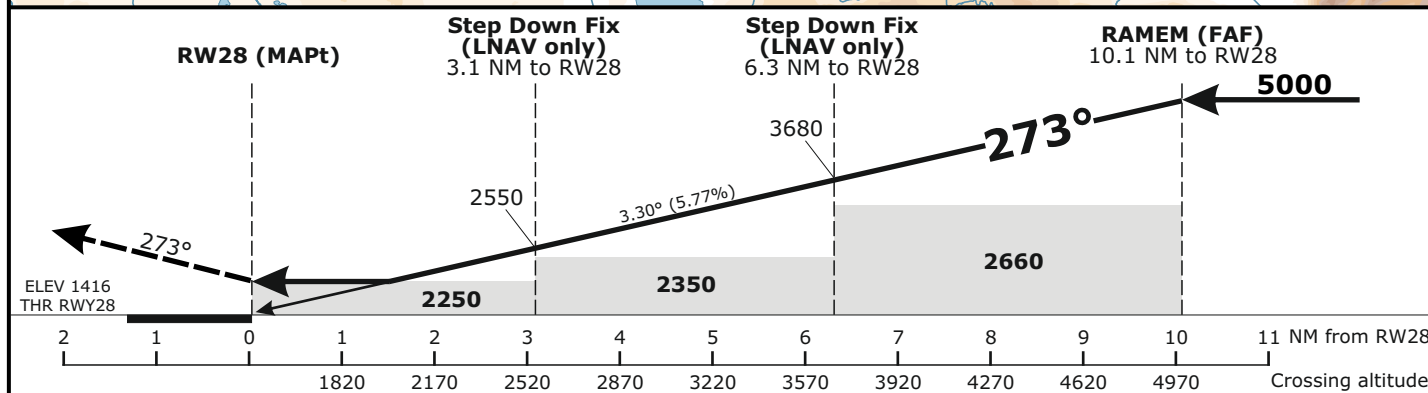
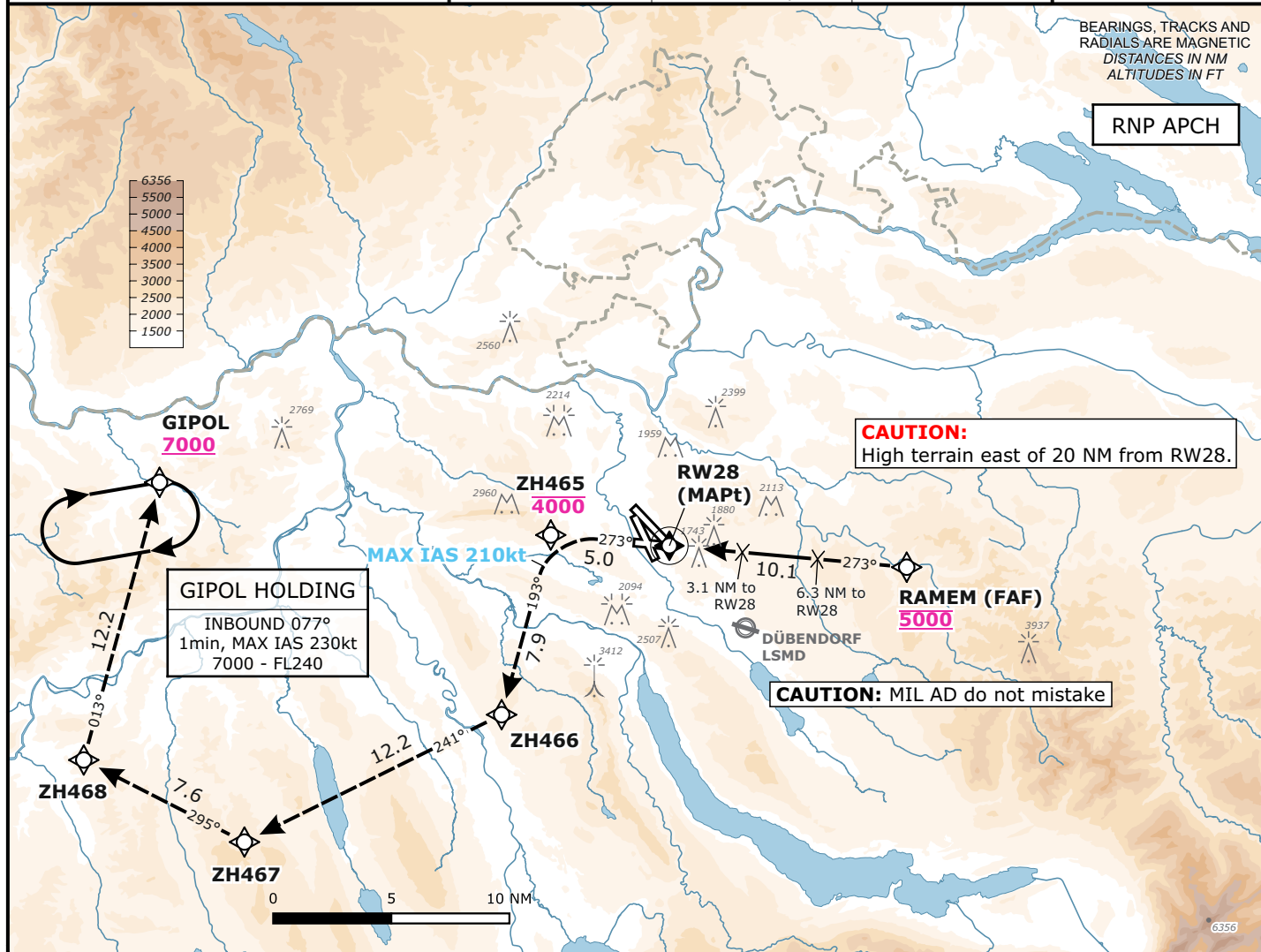
RNP
RWY 28

Frequencies		
Swiss Radar	135.015	133.050
	128.050	133.905
Zurich Arrival	135.230	130.560
Zurich Final	125.330	-
Zurich Tower	118.100	120.230
Zurich Apron	121.755	121.855
Zurich ATIS	125.730	-

Missed Approach		
Climb straight ahead to ZH465. Initial climb to 4000 .		
At ZH465 turn LEFT to ZH466. Proceed via ZH466, ZH467, ZH468 to GIPOL.		
Cross ZH465 at or below 4000 .		
When established on track to ZH466 continue climb to 7000 . Cross GIPOL at or above 7000 .		
AD ELEV 1417ft	TRANS LVL by ATC	TRANS ALT 7000

MSA LSZH ARP
Outer Circle: 25 NM
Inner Circle: 17 NM

Valid for flight simulation use only - do not use for real life navigation



Minima					Visibility	Ceiling	Remarks
	CAT A	CAT B	CAT C	CAT D			
MDA (H) LNAV	2250 (840)				4300m	900	Do not confuse RWY 32 with RWY 28.
DA (H) LNAV/VNAV	2176 (760)	2181 (765)	2187 (771)	2192 (776)			
DA (H) LPV	2091 (675)		2092 (676)	2102 (686)			

Changes: 8.33kHz frequencies